



ROAD
DIVISION

WATER
DIVISION

GROUNDS
MAINT.

BUILDING
MAINT.

FLEET
MAINT.

DEPARTMENT OF PUBLIC WORKS 2015 ANNUAL REPORT

CONTACT US:

For all questions regarding any DPW services or operations:
Our office hours are Monday – Thursday, 7:00 AM – 5:30 PM

PHONE: 248-594-2800

FAX: 248-594-2810

ADMINISTRATION

Thomas W. Trice – DPW Director
Rich Davis – DPW Superintendent
Katie M. Schlutow – Public Works Manager

ROAD DIVISION

Duane Poole – Road Foreman
road@bloomfieldtp.org
Snow Emergency Hotline: 248-594-2848

WATER & SEWER DIVISION

Steve Sierota – Water Foreman
water@bloomfieldtp.org
Water Emergency Line: 248-433-7730

FLEET & BUILDING MAINTENANCE

Noah Mehalski – Fleet/Facilities Manager

GROUNDS MAINTENANCE

Dean Begley – Grounds Foreman

RIZZO SERVICES

1-866-772-8900

Message from the Director:

Public Works is an integral part of the many services that are provided to the Township residents. Whether it be the actual infrastructure of our roads or water & sewer systems or the many vehicles and equipment utilized by Police & Fire services or the buildings that Township employees come to work in every day, Public Works is responsible for maintaining all of those many systems and assets. We achieve this through the labor and commitment that our highly skilled employees put into their jobs every day. They are the reason the Township's services stand above the rest.

On behalf of the entire staff of the Department of Public Works, it is my pleasure to present the 2015 Annual Report. I hope this report provides good insight into the services we provide as well as a better understanding of our daily operations.

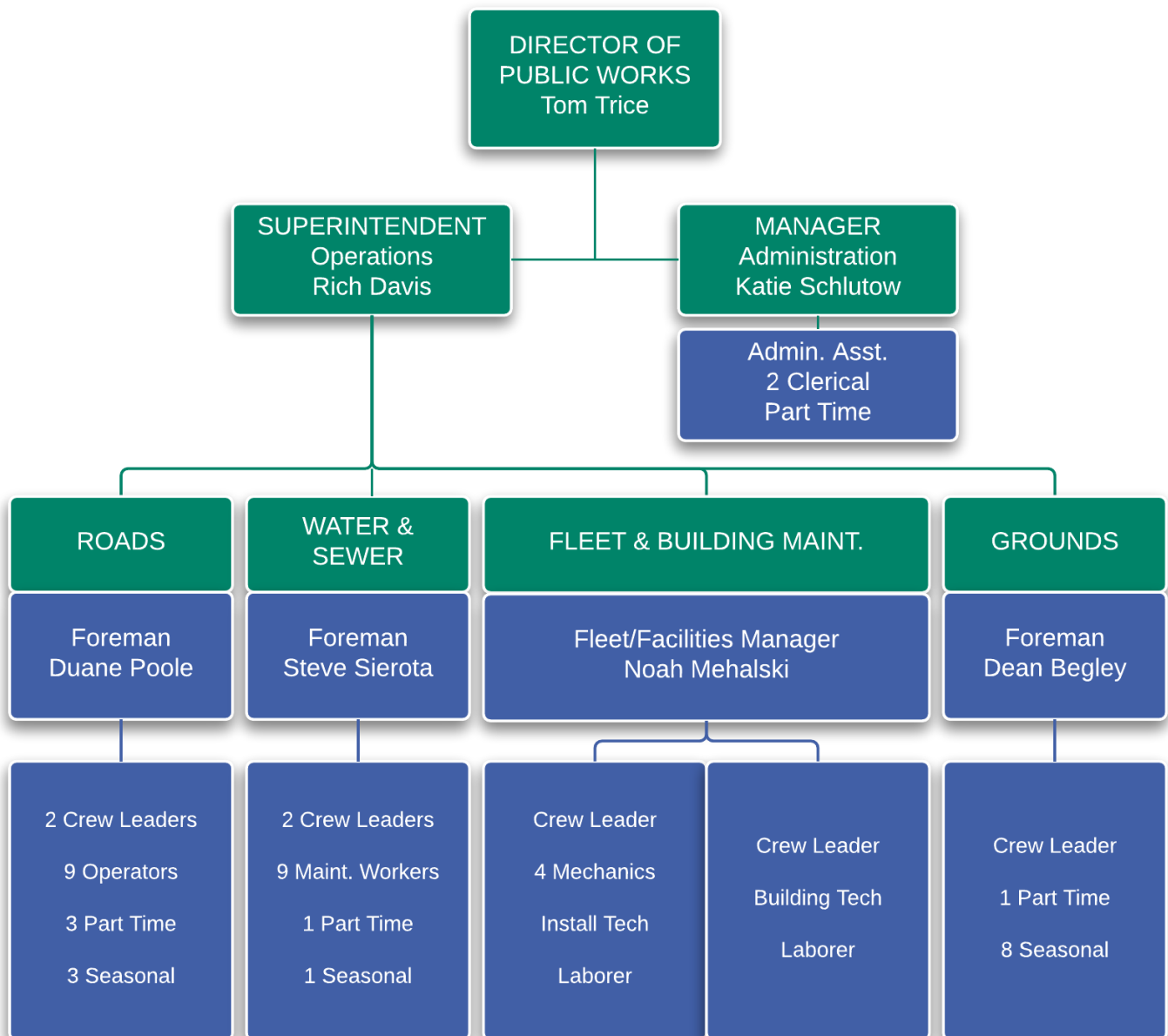
Thank you,



Thomas W. Trice
Public Works Director

MISSION STATEMENT

The Department of Public Works Administrative and Field staff commits to bring our best to work each day with a positive professional attitude towards providing the highest level of service possible to our customers.



DEPARTMENT PERSONNEL

Division	Employee	Title	Date of Hire	Years of Service
Administration	Tom Trice	Director	09/19/2005	10
	Rich Davis	Superintendent	03/24/1987	29
	Katie Schlutow	Manager	03/28/2005	11
	Tia Kollar	Admin. Assistant	12/11/2000	15
	Kim Sasser	Customer Service	12/09/1996	19
	Kelly Lagarde	Customer Service	10/31/2005	10
Road Division	Duane Poole	Road Foreman	02/23/1999	17
	Richard Bogusky	Crew Leader	04/13/1998	17
	Marco Nervo	Crew Leader	12/18/2002	13
	Clint Harwood	Operator	04/18/1993	22
	Jason Simpson	Operator	10/21/1995	20
	Jon Grigsby	Operator	04/01/1997	18
	Sean Caverly	Operator	08/23/1997	18
	Adam Roose	Operator	06/19/2004	11
	Bruce Carnahan	Operator	11/08/2004	11
	Jeff Krauskopf	Operator	01/13/2007	9
	James Davis	Operator	06/04/2011	4
Glenn Wood II	Operator	09/26/2011	4	
Water Division	Steve Sierota	Water Foreman	05/18/2001	14
	Craig Lewis	Crew Leader	11/26/2001	14
	Michael Domine	Crew Leader	02/25/2008	8
	Rick Jenkinson	Water Operator	08/09/1999	16
	Paul Palace	Water Operator	07/09/2001	14
	David Keller	Water Operator	07/21/2003	12
	Shane Beslock	Water Operator	04/29/2011	4
	Josh Eubanks	Water Operator	11/21/2011	4
Patrick McNamara	Water Operator	10/07/2013	2	
Fleet/Facilities Maintenance	Noah Mehalski	Fleet/Facilities Manager	10/15/2007	8
	Pat Quinn	Facilities Crew Leader	11/01/1999	16
	Bill Diviney	Fleet Crew Leader	01/10/2000	16
	Joseph Davis	Master Mechanic	03/24/1987	29
	Michael Rogers	Master Mechanic	08/17/1992	23
	James Finkley	Master Mechanic	07/04/1994	21
	Brett Moshier	Install/Service Tech	06/14/1999	16
	James Rowland	Maintenance Tech	11/08/2004	12
	Rob Stacherski	Laborer	11/24/14	1
Gerald Keller	Laborer	06/08/2015	< 1	
Grounds Maintenance	Dean Begley	Grounds Foreman	08/22/1998	17
	Hillary Drotoz	Crew Leader	11/25/2002	13



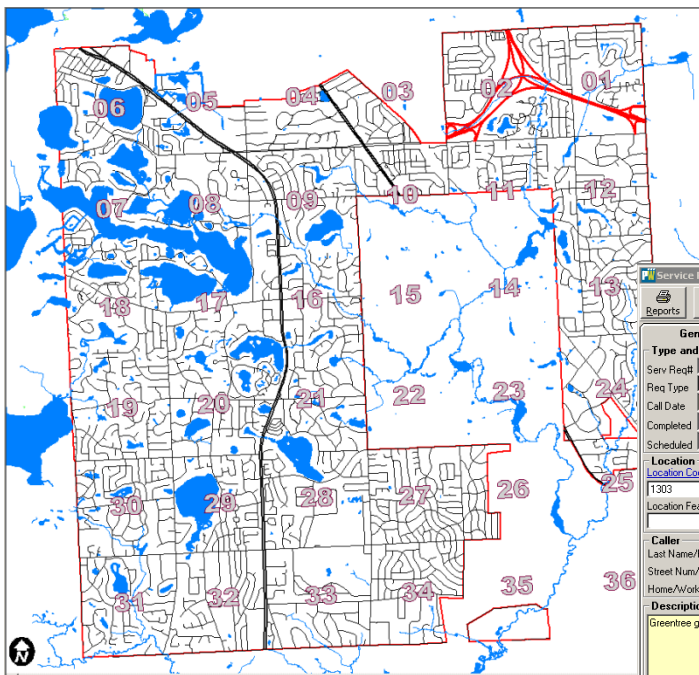
ADMINISTRATION

ADMINISTRATION

The Public Works Administration consists of an Administrative Assistant, two full-time customer service employees and one part-time customer service employee. Each employee is fully trained in every aspect of all the different Public Works Divisions so that they are able to answer questions and inform residents regarding all DPW operations.

Administration also includes management staff that is responsible for overseeing the entire department. The DPW Director is responsible for managing the Department's budget as well as developing and guiding the department's long-term direction and goals. The DPW Superintendent primarily oversees the DPW's operations. Each division's foreman and supervisors report to him directly regarding the day-to-day tasks and services. The Public Works Manager primarily oversees the DPW's administrative functions, such as contract management, billing dispute resolution and community events.

The primary function and top priority of administration is customer service. Administrative Staff answer all incoming calls for Roads, Water & Sewer, and Solid Waste. They are the first point of contact for addressing resident concerns and answering resident questions.



Service Request Log: 011556

Reports First Previous Next Last Add New Save Cancel Delete Locate Sort More Map

General Information		Extended Description		Activity Log		Service Request List View		
Type and Status				Statistics		Assignment		
Serv Req#	011556	Open	Closed	Days	Hours	Taken By	107	Sasser, Km
Req Type	R02	Trees And Shrubs		0.95	22.73	Assignee		
Call Date	07/16/2012	Time	15:13	0.95	22.73	Dept	101	Road Division
Completed		Time		Cost (\$)		Priority		
Scheduled		Misc				District	T3	District 13
Location								W0
Location Code / Name	L	LQ						
1303	Eastover Farms / 1303							
Location Feature Code / Name								
Caller								
Last Name/First	na	Find	Notes					
Street Num/Name	Greentree @ Dowling	Edit	City					State Zip
Home/Work/Cel		Clear	E-Mail					
Description and Contact Notes								
Greentree going northbound at Dowling on the Southeast corner across the street from the stop sign there is overgrowth blocking the view of oncoming traffic.								
User	Date	Time	Contact	Note				
*								

Record: 2 of 11,526 | 011556 | Trees And Shrubs | District 13 | Open



ROAD DIVISION

ROAD DIVISION

Bloomfield Township is the only Township in the State of Michigan to offer its residents the services of a sophisticated Road Division. By a contractual agreement with the Road Commission for Oakland County (RCOC), Bloomfield Township maintains the surface of 213 miles of subdivision roads and RCOC retains responsibility for 50 miles of primary roads and state trunk lines within Bloomfield Township.

Since it was established in the early 1970's, it has grown to become a highly respected and well equipped operation. All employees are required to maintain a commercial driver's license and are on call 24 hours a day as first responders.

The Road Division provides a wide range of services not offered by other townships. We maintain over 200 miles of subdivision roads and provide the following services:

- Snow Plowing
- Ice & Snow Control
- Winter Marker Program
- Asphalt Patching
- Gravel Road Grading
- Dust Control
- Median Maintenance on State Roads
- Roadside Litter Cleanup
- Street Sweeping
- Select Mowing
- Select Trimming
- Storm Damage
- Select Tree Removal
- Oakland County Tri-Party Paving Projects
- Oakland County 50/50 Drainage Improvements
- Oakland County 50/50 Bridge Projects

WE MAINTAIN

- **176 miles of Subdivision roads**
- **37 miles of unpaved gravel roads**



A look at the numbers...	
Miles of Patch Paving Completed	3.13
Tons of Cold Patch to fill Potholes	148
Tons of Gravel added to Gravel Rds	2,102
Number of Winter Storm Events	23
Total Sq Yds of Concrete Repaired & Replaced	4,761

ROAD DIVISION

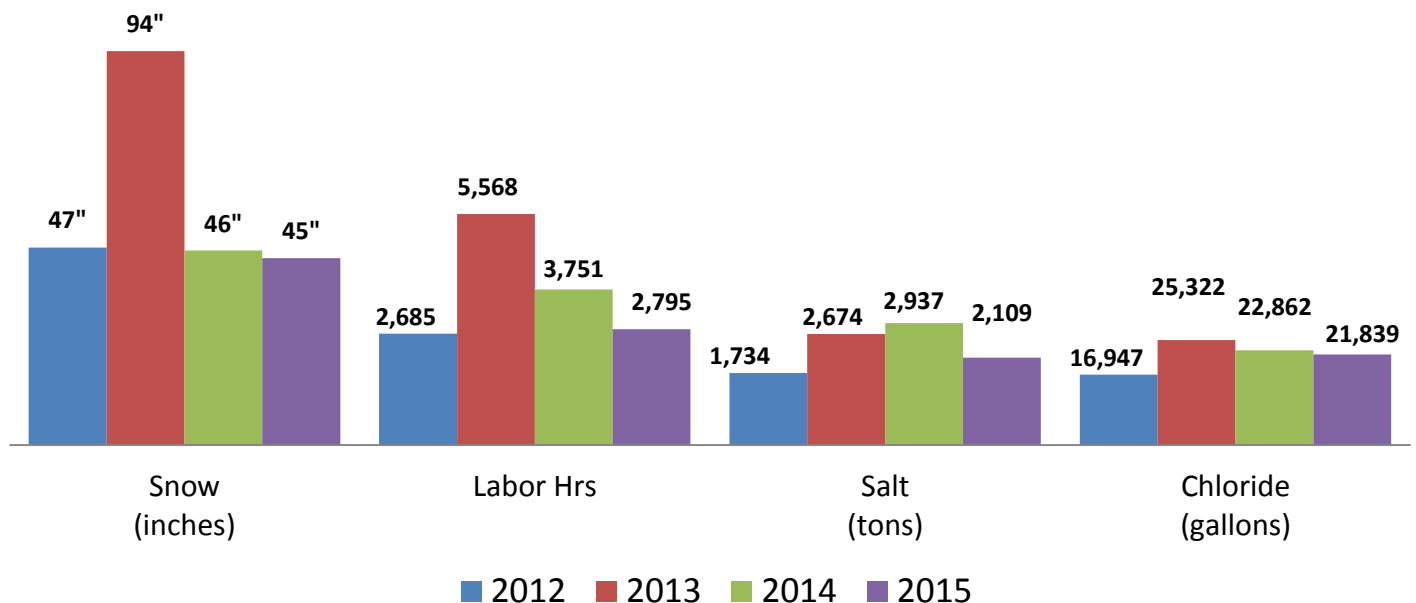
2015-2016 Winter Storm Season

Although the winter season may not have been as record breaking as the 2013-2014 Polar Vortex, the winter season did kick off with a bang on November 21st with snowfalls ranging from 10-16" across the southeast region. By the end of the season, the Road Division crews responded to a total of 22 winter storm events with a total snowfall of 45 inches (half the amount of the Polar Vortex!). Most of these storms had little snow accumulation, however they were very wet creating dangerous ice conditions for motorists. There was approximately 2,800 labor hours, 2,100 tons of salt and 21,800 gallons of calcium chloride used to in order to keep the roads safe and passable throughout the winter season.



Photo from Jay Baldwin – Bloomfield Twp. – November 21st Snowstorm

Winter Storms - Yearly Comparisons



ROAD DIVISION

Green Emergency Lights for Plow Trucks

The Road Division have equipped their plow trucks with new green emergency flashers. Experts say the green lights would be easier for drivers to see when heavy snow decreases visibility on the roads.

It also will help motorists distinguish what type of vehicle is on the road. Amber lights are commonly used by all types of vehicles: tow trucks, mail delivery, private snow plows; having the green flashers on only municipal vehicles will help to alert drivers that there is a slow moving municipal vehicle in the road and that they need to slow down and be cautious.

Previously, State law prohibited green lights on Michigan roads. The Michigan Department of Transportation, however, pushed to change that and House Bill 5247 was introduced in January of 2016 and then signed by Gov. Rick Snyder in June 2016.

Other states have also started installing green lights. Ohio started using them after having to change their state law as well.



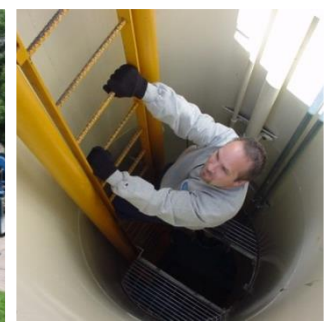
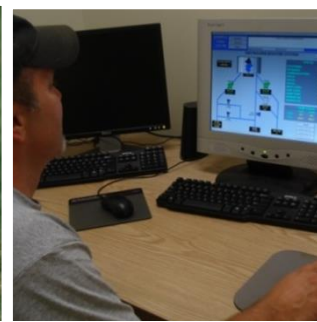
New Wing Plow to Increase Efficiency in Snow Plow Operations

The Road Division purchased a new plow truck in FY 2015/2016 and for the first time, it was equipped with a wing plow. The wing plow will be deployed on the right side of the standard plow truck, extending the plow's reach and allowing the driver to clear a subdivision road in two passes rather than three. By reducing the number of passes needed to clear the road during and after a winter snow event, the Road Division hopes to improve service while cutting labor, equipment, and fuel costs.

Other nearby communities, such as Farmington Hills, Novi and Auburn Hills, have begun using the wing plows over the past several years and the feedback they've provided is very positive. The wing plow will go into service for the first time for the 2016/2017 winter season.

ROAD DIVISION

Task	Labor Hours	Labor Cost	Eqp Cost	Mat Cost	Total Cost
Asphalt Overlay / S04	3,721	\$ 96,220.53	\$148,460.03	\$132,696.32	\$ 377,376.88
Basin&manhole Clean	20	\$ 357.10	\$ 92.40	\$ -	\$ 449.50
Basin&manhole Repair	8	\$ 233.48	\$ 36.96	\$ 27.74	\$ 298.18
Building&ground Maint	201	\$ 2,755.50	\$ 92.40	\$ -	\$ 2,847.90
Clerical	1,687	\$ 38,312.08	\$ -	\$ -	\$ 38,312.08
Clerical / WA2	10	\$ 226.90	\$ -	\$ -	\$ 226.90
Ditching	150	\$ 3,425.19	\$ 4,625.40	\$ -	\$ 8,050.59
Dream Cruise	148	\$ 5,329.35	\$ 1,043.04	\$ -	\$ 6,372.39
Dust Control	173	\$ 4,572.36	\$ 9,622.26	\$ 20,278.44	\$ 34,473.06
Emer. Drain Cleanout	283	\$ 6,687.38	\$ 1,233.70	\$ -	\$ 7,921.08
Equipment Servicing	757	\$ 18,642.56	\$ 13,231.53	\$ -	\$ 31,874.09
E-Waste	90	\$ 3,276.70	\$ 332.64	\$ -	\$ 3,609.34
Grade Gravel Surface	710	\$ 19,504.21	\$ 41,444.66	\$ 3,974.56	\$ 64,923.43
Guardrail-Post Maint.	16	\$ 400.96	\$ 343.06	\$ 166.86	\$ 910.88
HHW Day	146	\$ 5,655.37	\$ 231.00	\$ -	\$ 5,886.37
Holiday	910	\$ 24,797.40	\$ -	\$ -	\$ 24,797.40
Install/Remove C-markers	359	\$ 9,172.74	\$ 1,663.20	\$ -	\$ 10,835.94
Mailbox&misc. Repair	512	\$ 13,598.00	\$ 2,433.24	\$ 4,716.61	\$ 20,747.84
Misc. Maintenance	810	\$ 19,667.42	\$ 15,080.16	\$ 556.50	\$ 35,304.08
Open House	258	\$ 11,702.53	\$ 4,037.50	\$ -	\$ 15,740.03
Other	537	\$ 14,440.03	\$ -	\$ -	\$ 14,440.02
Patch Gravel Surface	955	\$ 26,676.30	\$ 47,074.35	\$ 23,015.08	\$ 96,765.73
Personal	210	\$ 5,645.96	\$ -	\$ -	\$ 5,645.96
Pothole Patching	7,856	\$ 177,973.24	\$118,694.13	\$ 44,441.41	\$ 341,108.78
Roadside Litter	527	\$ 7,406.48	\$ 3,284.70	\$ -	\$ 10,691.18
Roadside Mowing	133	\$ 1,669.00	\$ 4,905.14	\$ -	\$ 6,574.14
Safety Path Maintenance	10	\$ 100.00	\$ 46.20	\$ -	\$ 146.20
Salting & Plowing	2,458	\$ 77,278.39	\$155,311.13	\$157,134.41	\$ 389,723.93
Salting/Plowing cul-de-sacs	26	\$ 480.70	\$ 445.23	\$ -	\$ 925.93
Sanding	30	\$ 777.90	\$ 1,594.20	\$ 232.90	\$ 2,605.00
Sick	675	\$ 18,671.85	\$ -	\$ -	\$ 18,671.84
Sick / WL03	20	\$ 514.20	\$ -	\$ -	\$ 514.20
Sidewalk&parking Lots	2	\$ 85.52	\$ 32.48	\$ 38.29	\$ 156.29
Sign-Maint. Install.	23	\$ 821.23	\$ 222.50	\$ -	\$ 1,043.73
Sod Damage Repair	653	\$ 16,648.75	\$ 6,577.50	\$ 950.56	\$ 24,176.81
Supervision	2,273	\$ 81,250.14	\$ -	\$ -	\$ 81,250.14
Supervision / WA1	21	\$ 781.53	\$ -	\$ -	\$ 781.53
Sweeping Curb/Gutter	315	\$ 9,127.62	\$ 28,323.14	\$ -	\$ 37,450.76
Sweeping Intersection	98	\$ 2,647.78	\$ 3,589.50	\$ -	\$ 6,237.28
Training Program	245	\$ 6,761.95	\$ 558.12	\$ -	\$ 7,320.07
Trees And Shrubs	2,158	\$ 57,698.31	\$ 51,354.55	\$ -	\$ 109,052.85
Vacation	2,379	\$ 64,845.99	\$ -	\$ -	\$ 64,845.98
Vacation / WL01	19	\$ 500.81	\$ -	\$ -	\$ 500.81
Work For Other Dept.	1,116	\$ 13,702.13	\$ 197.70	\$ -	\$ 13,899.83
Workmans Comp.	6	\$ 136.14	\$ -	\$ -	\$ 136.14
Grand Totals	33,705	\$ 871,179.64	\$666,213.75	\$388,229.68	\$1,925,623.07



WATER DIVISION

WATER & SEWER DIVISION

The Water & Sewer Division is responsible for distributing safe drinking water to more than 16,000 customers. Drinking water is treated, tested and monitored on a continuous basis to ensure that it meets or exceeds all federally mandated requirements governing its quality.

The Water & Sewer Division is also responsible for providing a means to collect sanitary sewage disposal from more than 11,000 homes and businesses for transportation to the City of Detroit's wastewater treatment plant. The Division maintains the sewers and operates 9 sewage-pumping stations, which have been recently upgraded to ensure continuous operation.

The Water and Sewer Division employees all maintain Drinking Water Operator Certifications and are on call 24 hours a day as first responders.

The Water & Sewer Division performs many functions in order to ensure quality services. Some of those functions include the following:

WATER SUPPLY

- Maintain positive operating pressure over approximately 280 miles of public water mains that range in diameter from 6" to 24"
- Repair and maintain pressure regulating valves (PRV's) at 12 locations throughout the Township.
- Perform emergency repairs on public water mains as necessary.
- Repair and maintain over 2,900 fire hydrants.
- Repair and maintain over 2,900 operating valves.
- Install new water service connections to property lines.
- Locate underground pipes for Miss Dig.
- Collect water samples for testing.
- Maintain a 1-million gallon storage tank and booster station.

WE MAINTAIN

- 280 miles of public water mains
- 210 miles of sanitary sewer pipes

SEWAGE COLLECTION

- Maintain over 210 miles of sewer pipes to ensure sewage can flow freely by gravity.
- Inspect and repair 6559 sanitary manholes
- Perform necessary emergency repairs of sewer pipes.
- Clean public sewers with vector truck.
- Internally inspect public sewers with video equipment.
- Maintain pumping facilities for continuous operations.

A look at the numbers...

Number of Meters replaced	111
Number of Main Breaks	31
Linear Feet of Sewer Lines cleaned	67,408
Number of Miss Dig requests	2,408
Number of Hydrants replaced	11

WATER & SEWER DIVISION

SOCWA

In July of 2011, the Township began purchasing water from Southeast Oakland County Water Authority (SOCWA) instead of directly from Detroit Water and Sewerage Department (DWSD), now the Great Lakes Water Authority (GLWA). The large water storage capacities provided by SOCWA allow them to avoid more costly peak demand charges and provide a more stable rate. We are continuing our efforts with SOCWA to seek a permanent membership status with their organization.

Usage Rates

The water and sewer usage rates are billed per 1000 gallons based on the water volumes read on the customer's water meters. These rates consist of four components: 1) commodity charges, 2) operating expenses, 3) depreciation, and 4) capital projects.

1. Commodity Charges - The commodity charges are the largest component, making up 67% of the rates. These are the pass through costs from SOCWA for water and from the OCWRC for the sewage treatment. Both agencies are wholesale customers of DWSD and their costs consist largely on what DWSD charges them.
2. Operating Expenses - The Township DPW – Water Division is responsible for operating and maintaining the water and sewer system which includes a one million gallon storage reservoir, ten pumping facilities, over 500 miles of pipes along with the attached manholes, hydrants and valves. In addition over 15,000 water meters are read, billed and serviced. Township operating costs have been very consistent over the past several years, making up approximately 19% of the charges.
3. Depreciation - The average age of the water and sewer pipes within the Township's system is 50 years old with some pipes nearly 90 years old. Much of the system is nearing or is beyond half of their useful service life. Depreciation makes up approximately 10% of the rates.
4. Capital Projects - Since 2006, the Township has bonded for major repairs and replacements needed for both systems. This adds additional cost to the customer to pay the debt for the bond. Depreciation alone is not a sufficient amount needed to continue the current and future capital projects. Including a component in the rate for capital projects will help the Township build the necessary reserve without selling bonds. This component makes up only approximately 4% of the rate.

Water & Sewer Rates	
<i>Effective April 1, 2016</i>	
Water (per 1,000 gal)	\$ 5.20
Sewer (per 1,000 gal)	\$ 6.84
Water Debt (flat fee - per quarter)	\$ 11.50
Sewer Debt (flat fee - per quarter)	\$ 13.25
Ready to Serve - Water (flat fee - per quarter)	\$ 34.00
Ready to Serve - Sewer (flat fee - per quarter)	\$ 38.00
Sewer Only (per quarter)	\$ 291.25

WATER & SEWER DIVISION

Other Charges

In addition to the usage rate components, there are flat charges, billed per customer, per quarter. These are the Ready To Serve (RTS) and Debt Charges.

Ready To Serve: In 2009, DWSD began applying a monthly flat rate to their water and sewer charges regardless of what water volumes were used. DWSD had determined that 90% of their overall costs do not vary with the water usage. This is known as the “Ready To Serve” (RTS) charge which is widely used in the utility industry for charging customers for the stationary cost of being connected to the system. This helps to cover some of the costs of the Township’s operating expenses that do not vary with water usage. This includes services such as service appointments, utility staking, meter replacements, engineering, system repairs (water main breaks) and after hour emergency calls. It is a fair way to spread the costs to provide service to all of our customers in an equitable manner.

Debt Charges: Debt charges have been in place by Township Ordinances for over 50 years and it is a mechanism for the Township to collect sufficient revenue to cover the bond debt for the water and sewer system.

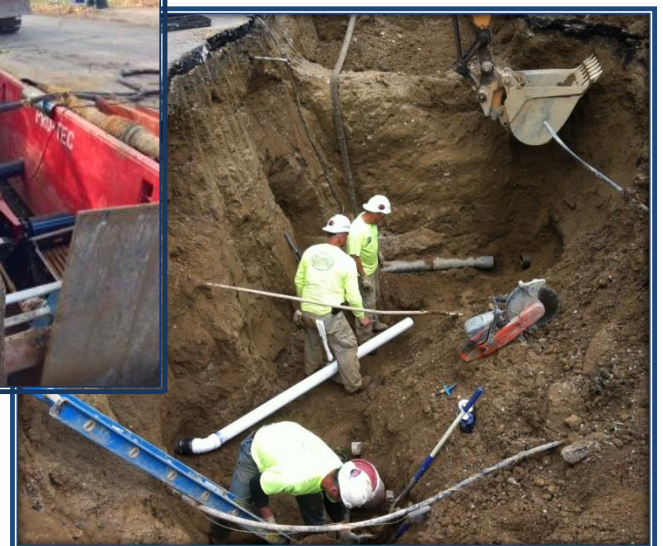
Meter Replacement Program

For the past several years the Water and Sewer Division has been systematically replacing old meters throughout the entire Township. The newer meters help to alleviate inaccurate meter readings that attribute to the Township’s total water loss and also improves efficiency by streamlining and speeding up the meter reading process. So far over 90% of Townships meters have been upgraded to newer more efficient meters.



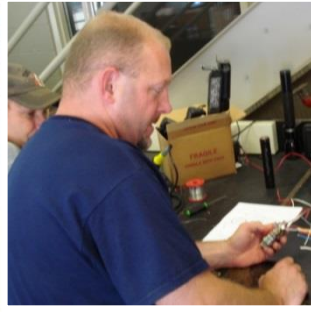
Capital Improvement Projects

Throughout the year, the Engineering and Environmental Services Department is tasked with replacing and upgrading the Township’s water and sewer line infrastructure. These projects could not be done without the assistance of the Water and Sewer Division crews. The staff helps with the locating of valves, shut-offs, manholes and hydrants for the contractors and also helps and assists with overseeing the inspections of the work completed.



WATER & SEWER DIVISION

Task	Labor Hours	Labor Cost	Eqp Cost	Mat Cost	Total Cost
After Hours Miss Dig	18	\$ 1,048.29	\$ 180.36	\$ -	\$ 1,228.65
Call Duty	446	\$ 22,794.07	\$ 55.44	\$ -	\$ 22,849.51
Clerical	31	\$ 547.20	\$ -	\$ -	\$ 547.20
Clerical / WA2	4695	\$ 87,571.17	\$ -	\$ -	\$ 87,571.17
Equipment Service	17	\$ 385.09	\$ -	\$ -	\$ 385.09
Gate Well Maint.	157	\$ 4,095.06	\$ 1,448.83	\$ -	\$ 5,543.88
General Maint.	191	\$ 4,963.26	\$ 688.16	\$ -	\$ 5,651.42
Holiday / WL06	700	\$ 18,863.10	\$ -	\$ -	\$ 18,863.10
Holiday/GL6	120	\$ 3,175.10	\$ -	\$ -	\$ 3,175.10
Hydrant Maint.	1829	\$ 47,063.55	\$ 11,362.49	\$ 24,752.31	\$ 83,178.35
Lawn Restoration	70	\$ 1,771.70	\$ 865.90	\$ -	\$ 2,637.60
Manhole Inspect	943	\$ 23,729.80	\$ 4,413.26	\$ -	\$ 28,143.06
Manhole Maint.	3	\$ 67.38	\$ 27.72	\$ -	\$ 95.10
Manhole Repair	16	\$ 394.96	\$ 73.92	\$ -	\$ 468.88
Meter Installed	521	\$ 14,711.36	\$ 3,535.62	\$ 34,353.68	\$ 52,600.66
Meter Miscellaneous	1796	\$ 49,433.70	\$ 11,268.54	\$ 20,824.34	\$ 81,526.57
Meter Reading	351	\$ 7,999.83	\$ 3,307.26	\$ -	\$ 11,307.09
Meter Replaced	655	\$ 18,784.52	\$ 4,257.60	\$ 21,829.37	\$ 44,871.48
Miscellaneous	2590	\$ 70,817.09	\$ 16,097.32	\$ 2,450.78	\$ 89,365.18
Miss Dig Staking	2086	\$ 55,881.36	\$ 16,873.78	\$ 682.96	\$ 73,438.10
Other	245	\$ 6,640.54	\$ -	\$ -	\$ 6,640.54
Other / WL05	93	\$ 2,211.90	\$ -	\$ -	\$ 2,211.90
Personal / WL02	145	\$ 4,115.21	\$ -	\$ -	\$ 4,115.21
Prv Maint.	590	\$ 17,024.04	\$ 5,453.22	\$ -	\$ 22,477.26
Pump Maint.	688	\$ 20,043.06	\$ 6,166.86	\$ -	\$ 26,209.92
Service Calls	374	\$ 16,468.07	\$ 3,887.63	\$ 932.36	\$ 21,288.07
Service Taps	10	\$ 263.10	\$ 50.10	\$ -	\$ 313.20
Sewer Cleaning	1285	\$ 33,929.31	\$ 38,144.29	\$ 2,750.00	\$ 74,823.60
Sick / WL03	657	\$ 17,693.29	\$ -	\$ -	\$ 17,693.29
Stop Box Maint.	366	\$ 9,531.72	\$ 6,162.48	\$ 603.22	\$ 16,297.42
Supervision	5	\$ 181.75	\$ -	\$ -	\$ 181.75
Supervision / WA1	1933	\$ 67,739.69	\$ 1,094.34	\$ -	\$ 68,834.03
Training Program / WG4	381	\$ 10,446.11	\$ -	\$ -	\$ 10,446.11
Vacation / WL01	1826	\$ 50,151.31	\$ -	\$ -	\$ 50,151.31
Video Sewers	268	\$ 7,139.67	\$ 9,217.60	\$ -	\$ 16,357.26
Water Main Breaks	533	\$ 17,699.89	\$ 3,993.49	\$ 5,282.63	\$ 26,976.01
Workmens Comp	10	\$ 239.10	\$ -	\$ -	\$ 239.10
Grand Totals	26,638	\$ 715,615.32	\$148,626.21	\$114,461.65	\$ 978,703.18



MAINTENANCE DIVISIONS

FLEET - BUILDING - GROUNDS

FLEET MAINTENANCE

There are eight employees in the Fleet Maintenance Division (Motor Pool), including the Fleet Manager, Crew Leader, Installation Tech, four State Certified mechanics and one Laborer. The Motor Pool is responsible for the maintenance and emergency work on over 167 fleet vehicles and 55 pieces of equipment.



The Fleet Manager and Crew Leader work together to oversee the management and daily operations of the Division. One mechanic is dedicated to the maintenance and repair of light vehicles.

This includes vehicles such as all of the police vehicles, building inspection vehicles, administrative vehicles and also small equipment like lawn mowers, chainsaws, pumps and generators used by the Roads, Water and Grounds Divisions.

Three mechanics are dedicated to the maintenance and repair of all large equipment and vehicles including Fire Department Engines, Paramedic Rescues and Snow Removal Equipment.

All mechanics, including the Crew Leader are State Certified, are crossed trained and able to work on any Township equipment. The mechanics are also trained in welding and fabricating for all facets of maintenance and repair.

The installation tech is responsible for upfitting and maintaining all aftermarket emergency equipment installed on Township emergency vehicles such as police patrol vehicles. Many components, including radios, emergency lighting, sirens, Mobile Data Computers (MDC), in-car video systems, mounted radar and prisoner partitions are all a part of the upfitting process.

Motor Pool employees are first responders and on call 24 hours a day.



FLEET MAINTENANCE

Equipment Overhaul / Replacement

During the 2015-2016 fiscal year, the Motor Pool Division facilitated the complete overhaul and or replacement of several pieces of machinery. In some cases equipment had exceeded its useful life, while in others, there was an opportunity to rebuild our existing equipment to extend its useful life and limit future maintenance costs. Replacement was chosen for several Police Cruisers, as well as a plow truck which was beginning to have parts availability issues. On the other hand, several pickups received new beds and our older Vactor truck underwent a complete refurbishment by the original supplier of the vehicle. This has not only limited the high maintenance cost but, decreased the downtime related to repairs for this specialized equipment.

Succession Planning

Some time ago, the Division developed a plan for and manage upcoming retirements / hiring. The Division will experience up to 3 retirements in the next 2-3 years. In order to maintain the high quality of service currently provided by the Division, this transitional plan has been developed and is updated and/or administered accordingly.

Training

Motor Pool staff have been trained on a myriad of skills which have improved customer service and work quality. For instance, staff attended Compuspread 550 training, Waterous fire pump training and several other in house trainings related to safety. Also, in 2015, the Divisional Manager was asked to plan and facilitate a Michigan American Public Works Association Mechanic and Technician Training event. The event drew over 60 people from all over the state of Michigan. He will again be planning the event for 2016 and hope to grow the attendee numbers and provide an exceptional speaker group. In addition, the Division Manager serves as the chair of the Southeast Michigan Municipal Fleet Managers Association. Working to plan and facilitate monthly information sharing meetings and events for fleet managers from all over Metro-Detroit.



FLEET MAINTENANCE

System Component / Task	Labor Hours	Labor Cost	Part Cost	Total Cost
- MINOR-LUBE	146.70	\$ 4,401.00	\$ 1,183.39	\$ 5,584.39
- FUEL	17.60	\$ 528.00	\$ -	\$ 528.00
- PREV. MAINT.	1,763.10	\$ 53,708.00	\$ 34,376.32	\$ 88,084.32
- PREV. MAINT.	109.90	\$ 3,297.00	\$ 2,734.92	\$ 6,031.92
- PREV. MAINT.	16.40	\$ 492.00	\$ 893.49	\$ 1,385.49
- PREV. MAINT.	11.60	\$ 348.00	\$ 464.85	\$ 812.85
- PREV. MAINT.	194.60	\$ 5,838.00	\$ 386.34	\$ 6,224.34
- TIRES,AUTO	142.10	\$ 4,263.00	\$ 25,237.40	\$ 29,500.40
- TIRES,TRUCKS	14.30	\$ 1,359.00	\$ 14,773.12	\$ 16,132.12
- TPMS	6.30	\$ 189.00	\$ -	\$ 189.00
- A/C,HEAT,VENT	202.70	\$ 6,081.00	\$ 3,870.95	\$ 9,951.95
- BODY SHEEY MET.	39.50	\$ 1,347.00	\$ 709.60	\$ 2,056.60
- CAB	186.10	\$ 37,975.11	\$ 34,487.44	\$ 72,462.55
- DUMP BOX	18.40	\$ 552.00	\$ 129.88	\$ 681.88
- STRIPING	38.90	\$ 1,692.00	\$ 224.60	\$ 1,916.60
- AXLE,REAR	39.50	\$ 1,228.45	\$ 1,329.94	\$ 2,558.39
- BRAKES	419.00	\$ 12,570.00	\$ 28,254.61	\$ 40,824.61
- STEERING	59.00	\$ 3,542.70	\$ 3,390.80	\$ 6,933.50
- SUSPENSION	89.20	\$ 5,369.85	\$ 7,015.61	\$ 12,385.46
- WHLS,HUBS,BRGS.	10.80	\$ 727.95	\$ 1,330.86	\$ 2,058.81
- BUMPERS,P.BUMP.	5.70	\$ 171.00	\$ -	\$ 171.00
- AXLE DRVN.F.STR	1.40	\$ 405.95	\$ 167.82	\$ 573.77
- AXLE DRVN.REAR	17.80	\$ 534.00	\$ 160.62	\$ 694.62
- CLUTCH	26.90	\$ 807.00	\$ 294.59	\$ 1,101.59
- DRIVE SHAFT(S)	16.10	\$ 483.00	\$ 168.50	\$ 651.50
- TRANS.AUTOMATIC	75.30	\$ 3,622.35	\$ 7,778.01	\$ 11,400.36
- TRANSFER FR.TRK	7.60	\$ 228.00	\$ -	\$ 228.00
- CHARGING SYS.	90.60	\$ 2,718.00	\$ 3,652.89	\$ 6,370.89
- CRANKING SYS.	65.70	\$ 1,971.00	\$ 3,660.59	\$ 5,631.59
- IGNITION SYS.	4.30	\$ 129.00	\$ -	\$ 129.00
- LIGHTING SYS.	214.60	\$ 6,438.00	\$ 5,580.85	\$ 12,018.85
- MISC.	208.40	\$ 6,328.00	\$ 1,333.05	\$ 7,661.05
- AIR BAG SYSTEM	1.10	\$ 185.00	\$ -	\$ 185.00
- BATTERY REPLACEMENT	29.70	\$ 891.00	\$ 6,963.92	\$ 7,854.92
- COMP U SPREAD	28.00	\$ 840.00	\$ 952.62	\$ 1,792.62
- EMERGENCY LIGHTING	249.30	\$ 24,015.97	\$ 42,395.85	\$ 66,411.82
- AIR INTAKE SYS.	9.10	\$ 273.00	\$ 148.20	\$ 421.20
- COOLING SYS.	97.70	\$ 3,081.00	\$ 4,416.59	\$ 7,497.59
- EXHAUST SYS.	89.20	\$ 4,336.75	\$ 7,688.91	\$ 12,025.66
- FUEL SYS.	171.30	\$ 10,700.00	\$ 6,458.36	\$ 17,158.36
- COMP.CNTRL.SYS.	112.70	\$ 10,622.80	\$ 12,973.79	\$ 23,596.59
- TUNE UPS	0.20	\$ 2,286.00	\$ 4,969.49	\$ 7,255.49
- ENGINE OVERHAUL	39.90	\$ 1,197.00	\$ 3,306.85	\$ 4,503.85

FLEET MAINTENANCE

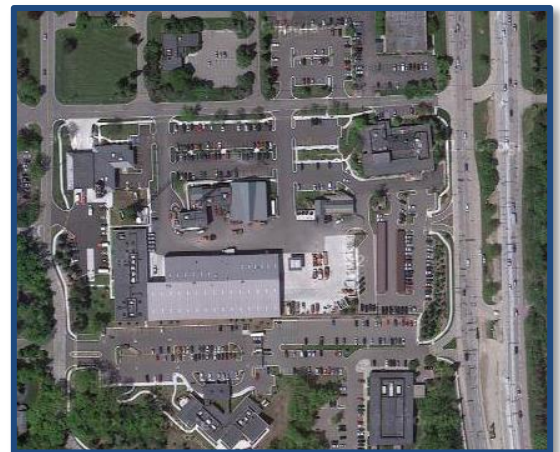
System Component / Task	Labor Hours	Labor Cost	Part Cost	Total Cost
- BELTS	13.30	\$ 399.00	\$ 927.20	\$ 1,326.20
- OIL COOLER LINES	4.00	\$ 120.00	\$ 121.47	\$ 241.47
- GASKETS & SEALS	1.30	\$ 895.55	\$ 210.60	\$ 1,106.15
- GEN. ACCESS.	495.60	\$ 17,411.31	\$ 34,159.57	\$ 51,570.88
- TOW CHAINS,CBL.	0.00	\$ 945.00	\$ -	\$ 945.00
- CHL.TANK TRAIL.	3.60	\$ 108.00	\$ -	\$ 108.00
- FABRIC. WELDING	71.10	\$ 2,133.00	\$ 4,836.52	\$ 6,969.52
- FIRE TRKS. PUMP	29.60	\$ 888.00	\$ 318.05	\$ 1,206.05
- UNDER BDY.SCRP.	56.30	\$ 1,689.00	\$ 1,762.44	\$ 3,451.44
- SALT SPREADERS	122.50	\$ 3,675.00	\$ 987.74	\$ 4,662.74
- FRONT PLOW	105.70	\$ 3,171.00	\$ 4,099.03	\$ 7,270.03
- VEH.COUP. SYS.	8.40	\$ 252.00	\$ 25.72	\$ 277.72
- COMPUTER SYSTEM	457.70	\$ 13,731.00	\$ 2,787.15	\$ 16,518.15
- SIREN	3.00	\$ 90.00	\$ 181.40	\$ 271.40
- EMERGENCY RADIO SYSTEM	185.90	\$ 5,789.50	\$ 610.19	\$ 6,399.69
- VIDEO SYSTEM	231.60	\$ 6,948.00	\$ 165.65	\$ 7,113.65
- RADAR SYSTEM	41.80	\$ 1,254.00	\$ 601.48	\$ 1,855.48
- AFTER MARKET BUILD	81.60	\$ 3,574.00	\$ 3,905.10	\$ 7,479.10
- AFTER MARKET TEAR DOWN	47.60	\$ 1,428.00	\$ 98.79	\$ 1,526.79
- REMOVE/REINSTALL FOR VENDOR	34.20	\$ 1,026.00	\$ 22.99	\$ 1,048.99
- CONTROL VALVES	7.40	\$ 222.00	\$ -	\$ 222.00
- HOSES,CUPL.CYL.	84.40	\$ 2,532.00	\$ 2,224.92	\$ 4,756.92
- TANK,VLVS.-HYD.	23.00	\$ 690.00	\$ 1,136.13	\$ 1,826.13
- MISC.	102.30	\$ 3,069.00	\$ 6,254.87	\$ 9,323.87
- SUPERVISION	1,891.50	\$ 56,745.00	\$ -	\$ 56,745.00
- CLERICAL	912.70	\$ 27,381.00	\$ -	\$ 27,381.00
- ROAD TEST	283.30	\$ 8,499.00	\$ -	\$ 8,499.00
- VACATIONS	1,741.70	\$ 52,251.00	\$ -	\$ 52,251.00
- SICK LEAVE	533.60	\$ 16,008.00	\$ -	\$ 16,008.00
- PERSONAL LEAVE	122.00	\$ 3,660.00	\$ -	\$ 3,660.00
- TRAINING	241.00	\$ 7,230.00	\$ -	\$ 7,230.00
- PARTS PICKUP	407.10	\$ 12,213.00	\$ -	\$ 12,213.00
- PARTS HANDLING	374.70	\$ 11,241.00	\$ -	\$ 11,241.00
- MOVING VEHICLES	508.50	\$ 15,255.00	\$ -	\$ 15,255.00
- CLEANING	345.30	\$ 10,359.00	\$ -	\$ 10,359.00
- FUELING	2.00	\$ 60.00	\$ -	\$ 60.00
- WASHING VEH.	58.90	\$ 1,767.00	\$ -	\$ 1,767.00
- MISC.	28.50	\$ 855.00	\$ -	\$ 855.00
- SHOP EQUIP.	52.00	\$ 1,560.00	\$ -	\$ 1,560.00
- SNOW REMOVAL	25.90	\$ 777.00	\$ -	\$ 777.00
- OPERATIONS	375.80	\$ 11,274.00	\$ -	\$ 11,274.00
	15,204.70	\$536,948.24	\$339,302.63	\$876,250.87

BUILDING MAINTENANCE

The Building Maintenance Division employs two full time technicians and one full time laborer. The technicians have substantial knowledge and experience in all aspects of municipal building maintenance and are responsible for maintaining 12 Township buildings and also their exterior structures such as parking lot lights and signage. They also oversee and manage multiple service contracts, including the custodial contract for all the buildings. They are first responders and on call 24 hours a day.



The Building Maintenance staff's major responsibility and focus is in preventative maintenance. Routine inspections and maintenance help to keep the buildings running at optimum levels and helps to prevent system breakdowns. They are also responsible for technical repairs, construction and alteration of all Township buildings, maintenance and repair of HVAC units, electrical, plumbing and carpentry work. In addition to all their building maintenance responsibilities there are also many miscellaneous tasks frequently required of them such as set ups and break downs for special meetings and events, recycling collection and bio-hazard clean ups.



Asset Management Planning

The Building Maintenance Division of the Public Works Department performs preventive maintenance activities to prolong the life of the various mechanical systems and to maintain / improve the condition of the facilities in general. An asset management plan was developed to guide maintenance activities into the next 20 years. This plan will serve as the Building Maintenance Divisions primary tool to plan for a carry out future maintenance activities.

Roofing Maintenance Program

The Township has 11 major facilities including 31 distinct sections of roofing ranging from 1-20 years old. In addition, the construction of each roof varies depending on the intended use of the structure and the year of installation. The Township contracts with a local roofing firm to perform twice yearly inspections, preventative maintenance and repairs for these roofs. This is important because of the assets protected by these roofs and the fact that Building Maintenance staff does not have the resources or expertise to perform these preventative maintenance and repair activities on their own. This program has resulted in the repair of countless holes in the roofs as well as flashing and leak issues.

BUILDING MAINTENANCE

Township Hall Drainage Improvements

In recent history, heavy rains have overflowed the drainage system at the entrance to the Planning, Building and Ordinance Department. This flooding entered the building and caused minor carpet, tile, and fixture damage on at least two occasions. In the summer of 2015, a project was undertaken along with the Engineering and Environmental Services Department to alleviate this drainage issue. Through the project, storm drains were installed and connected to the existing system with upsized conduits. To accomplish this, the project involved detailed site evaluation, engineering design, major construction work and the closure of two of three main Township Hall entrances. This work has corrected an ongoing yet intermittent issue impacting one of our major facilities.

Police Department Locker Room Remodeling

The Police Department men's and women's locker rooms were constructed in middle 1980's and were in need of a full remodeling. This project involved the total demolition of the locker rooms down to the studs, the complete renovation of showers, floors and the replacement of all fixtures. This project also addressed insufficient ventilation and ongoing maintenance issues encountered in the locker rooms. The updated facilities should serve the Department long into the future.



Fire Station Upgrades

Major safety, usability and appearance upgrades were completed at several fire Stations. Automatic Exhaust Fume extraction systems were upgraded at Stations 3 & 4. Flooring and failed ceiling tile were also replaced in Station # 3. These projects not only improved safety and usability of the facilities but, upgraded their appearance as well.

Staffing

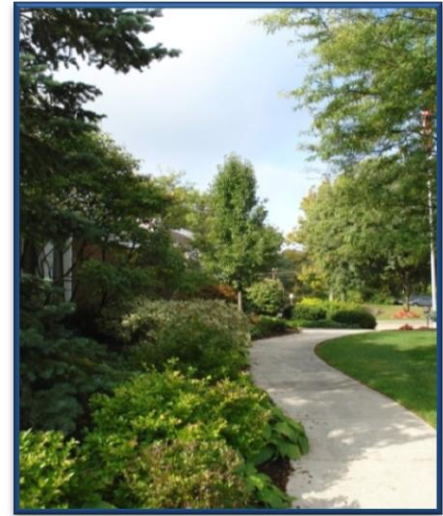
Major capital improvement projects completed in 2009 added over 150000 square feet of buildings space and over 100 pieces of mechanical equipment. Through ongoing evaluation of staff, division workload, and operations, it was decided to add an additional full-time Laborer to this division. This staffing modification will not only allow the Township to maintain its high level of service in the face of additional facilities maintenance requirements but, will also allow the Division to properly prepare for the expected and unexpected challenges that it face us in the near future.

BUILDING MAINTENANCE

COMPONENT/TASK	Labor Hours	Labor Cost	COMPONENT/TASK	Labor Hours	Labor Cost
- SINKS	72.50	\$ 1,304.29	- ELEVATORS	1.50	\$ 29.77
- TOILETS	61.25	\$ 1,180.16	- CRANES	1.00	\$ 9.50
- SHOWERS	12.00	\$ 199.36	- EXTERIOR STRUCTURES	244.25	\$ 4,280.54
- FLOOR DRAINS	12.50	\$ 173.07	- COMPRESSORS	36.00	\$ 873.98
- BACKFLOW PREV.	4.50	\$ 119.92	- POOL	5.00	\$ 107.68
- POWER WASHERS	21.50	\$ 373.07	- PARTS RUN	273.00	\$ 3,866.62
- FIRE SUPPRESSION	6.50	\$ 165.56	- INVENTORY HANDLING	32.00	\$ 400.05
- PUMPS	17.00	\$ 415.85	- RECYCLE BINS	175.00	\$ 1,771.14
- DRINKING FOUNTAINS	7.00	\$ 189.80	- TRASH BINS	96.50	\$ 971.07
- HOT WATER TANKS	2.00	\$ 34.52	- AUDITORIUM SETUP	104.00	\$ 1,678.21
- CHLORIDE TANK	2.50	\$ 62.55	- BOXES	11.50	\$ 171.33
- PIPING	9.00	\$ 193.28	- MOVE/ASSEM FURNITURE	94.50	\$ 1,556.48
- PARKING LOT LIGHTS	55.25	\$ 1,333.66	- VENDING MACHINES	20.50	\$ 194.75
- INTERIOR LIGHTS	286.00	\$ 5,598.90	- RESTOCK MISC. SUPPLIES	94.25	\$ 1,608.93
- GENERATORS	13.00	\$ 451.40	- RESTOCK COPY PAPER	75.50	\$ 756.05
- SWITCHES/OUTLETS	22.50	\$ 492.74	- RESTOCK WATER BOTTLES	27.00	\$ 295.30
- CONDUIT/WIRING	56.50	\$ 1,463.19	- CARPENTRY WORK	1.00	\$ 9.50
- EXTERIOR LIGHTS	138.50	\$ 2,702.98	- BATTERIES	7.50	\$ 79.01
- APPLIANCES	88.75	\$ 1,780.03	- BIO-HAZARD	6.00	\$ 111.32
- BOILER	28.50	\$ 951.13	- JANITORIAL	1.00	\$ 261.05
- HVAC	408.00	\$ 8,874.19	- MAIL RUN	73.00	\$ 1,215.64
- VAV BOXES	19.00	\$ 458.13	- SHOP EQUIPMENT	11.50	\$ 186.85
- CHILLER	18.00	\$ 386.98	- CLEANING SHOP/EQUIP	67.50	\$ 689.28
- UNIT HEATER	6.50	\$ 89.43	- WORK FOR OTHER DEPT.	29.00	\$ 368.62
- SPLIT SYSTEM	21.00	\$ 559.30	- KEYS	2.00	\$ 46.68
- EXHAUST FAN	55.00	\$ 1,089.34	- OFFICE EQUIPMENT	8.00	\$ 124.03
- HV UNIT	4.00	\$ 111.80	- MEEETINGS	157.00	\$ 3,239.51
- AIR HANDLER	20.50	\$ 713.46	- CONTRACT/VENDOR MGMT	841.50	\$ 30,267.24
- MISC. DISPENSORS	1.50	\$ 14.25	- CLERICAL	577.50	\$ 15,764.54
- DOORS/LOCKS	104.00	\$ 1,987.15	- VACATION	554.25	\$ 14,107.05
- WINDOWS	25.00	\$ 432.97	- SICK	179.50	\$ 4,349.57
- ROOF	19.00	\$ 330.87	- PERSONAL	56.50	\$ 1,302.28
- CEILING	68.00	\$ 1,143.85	- FLOATING HOLIDAY	26.50	\$ 307.10
- WALLS - EXTERIOR	5.50	\$ 98.81	- FUNERAL LEAVE	47.50	\$ 1,271.97
- WALLS - INTERIOR	91.50	\$ 1,349.94	- TRAINING	44.00	\$ 938.68
- FLOORS	33.00	\$ 558.01		5,799.00	\$130,595.26

GROUNDS MAINTENANCE

The Grounds Maintenance Division employs two full time employees, one who is a certified arborist and both who are fully trained and certified in many aspects of landscaping, irrigation and plant and tree maintenance. Both employees also have pesticide applicator's licenses and CDLs. They are responsible for the grounds maintenance on Township owned and leased buildings on the main campus. They are also responsible for administering the state highway landscape maintenance contract and the safety path and outlot mowing contracts.



Township Campus Maintenance

More than 4 acres of lawn is maintained on the Township Campus through mowing, trimming, weed control and fertilization. Also an additional 2+ acres of tree and bed maintenance is performed which includes weeding, trimming, mulching, design and installation of new beds and flower planting. Annually they plant over 120 flats of flowers each spring and apply 130 – 260 yards of mulch per season. They also maintain 12 irrigation systems on campus used to water all of the lawns and beds.

Winter Maintenance

During the winter season the Grounds Division is on call 24 hours a day and responsible for all snow removal in the main Township campus area which includes over 4 acres of parking lots and over 3000 linear feet of pedestrian walkways and stairs. One employee is utilized by the Road Division and assigned to a dedicated plow route for the entire winter. The Grounds Division further assists the Road Division with a fleet of pickup trucks they use to help plow and clear the cul-de-sacs.



GROUNDS MAINTENANCE

State Highway Landscape Maintenance

The Grounds Division contracts out the landscape maintenance of our State highways and is reimbursed, in part, through an agreement with MDOT. The contract includes all lawn maintenance and bed/tree maintenance of the center islands and shoulders of Telegraph, Square Lake and Woodward.

State highway maintenance also includes the Grounds Division designing and overseeing the planting of many trees each year.

Also, they bid out and oversee the lawn spraying & fertilization contract and the Austrian Pine tree spraying contract.

Currently all of the maintenance of the eight irrigation systems and lighting is retained in-house.



Safety Path Maintenance

Maintenance of over 72 miles of safety paths, which includes the mowing, edging and string trimming, is contracted and overseen by the Grounds Division. In-house, they are still responsible for emergency tree removal, fence/wall repair and tree and brush trimming which is a full time job during the growing season.



Outlot Maintenance

The Grounds Division negotiated and implemented a contract for the lawn maintenance at the Township owned outlots, which includes sewer pumping stations, fire stations, retention basins, PRV locations, the water storage facility and the Westbourne booster station. They also oversee the contract for the spraying and fertilizing of these outlots as well.

GROUNDS MAINTENANCE

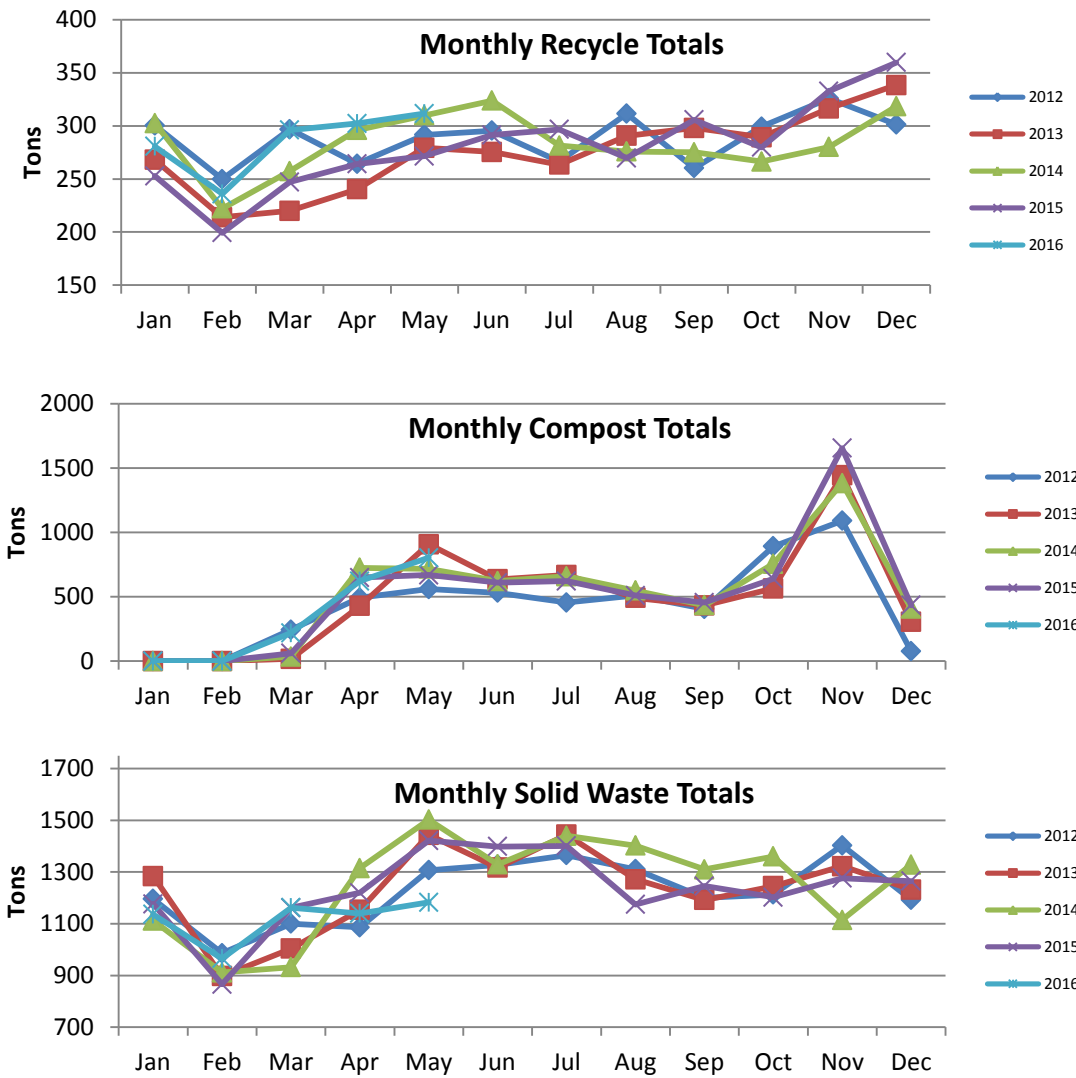
Task	Labor Hours	Labor Cost	Eqp Cost	Mat Cost	Total Cost
Apply Lawn Fertilizer	44.00	\$ 1,021.82	\$ 384.28	\$ -	\$ 1,406.10
Apply Weed and Pest Control	114.00	\$ 3,082.68	\$ 1,020.48	\$ -	\$ 4,103.16
Clear and Salt Sidewalks	286.50	\$ 4,604.47	\$ 2,454.30	\$ 2,862.80	\$ 9,921.57
Clerical GA2	34.00	\$ 1,008.44	\$ -	\$ -	\$ 1,008.44
Daily Debris and Litter	250.50	\$ 3,702.42	\$ 1,823.74	\$ -	\$ 5,526.16
Emergency Tree Removal -Safety Path and Outlot	88.00	\$ 1,875.18	\$ 575.62	\$ -	\$ 2,450.80
Equipment and Shop Mait.	374.00	\$ 6,960.10	\$ 218.26	\$ -	\$ 7,178.36
Equipment Service G	221.00	\$ 4,390.78	\$ 605.46	\$ -	\$ 4,996.24
Fall Maintenance	207.00	\$ 4,309.35	\$ 1,256.38	\$ -	\$ 5,565.73
Fence -Safety Path and Outlot	95.00	\$ 2,154.76	\$ 608.26	\$ 43.80	\$ 2,806.82
General Path Cleanup - Safety Path and Outlot	311.50	\$ 5,300.21	\$ 2,599.02	\$ -	\$ 7,899.23
Holiday/GL6	170.00	\$ 5,309.40	\$ -	\$ -	\$ 5,309.40
Irrigation Repair and Mait.	339.00	\$ 7,913.70	\$ 2,319.72	\$ 188.29	\$ 10,421.71
Miscellaneous G	294.00	\$ 6,935.58	\$ 687.00	\$ -	\$ 7,622.58
Mow and Trim Lawns	1,190.50	\$ 16,874.18	\$ 6,393.38	\$ -	\$ 23,267.56
Other/GL5	108.00	\$ 3,383.64	\$ 92.40	\$ -	\$ 3,476.04
Paint Parking Lot Lines	6.00	\$ 151.32	\$ 18.48	\$ -	\$ 169.80
Parts Pick-Up	120.50	\$ 2,597.07	\$ 773.84	\$ -	\$ 3,370.91
Personal GL2	65.00	\$ 2,033.11	\$ -	\$ -	\$ 2,033.11
Plow and Salt Parking Lots	254.00	\$ 7,120.03	\$ 5,283.07	\$ 4,267.79	\$ 16,670.89
Roadside Litter	2.00	\$ 42.66	\$ 10.02	\$ -	\$ 52.68
Salting/Plowing cul-de-sacs	92.00	\$ 1,828.82	\$ 1,507.10	\$ -	\$ 3,335.92
Sick GL3	84.00	\$ 2,685.16	\$ -	\$ -	\$ 2,685.16
Supervision GA1	1,338.00	\$ 44,154.00	\$ 11,430.78	\$ -	\$ 55,584.78
Training Program	20.00	\$ 660.00	\$ 92.40	\$ -	\$ 752.40
Tree & Bush Trimming - Safety Path and Outlot	1,827.50	\$ 21,302.03	\$ 12,618.40	\$ -	\$ 33,920.43
Tree and Shrub Maitenance	2,865.00	\$ 39,899.65	\$ 17,005.20	\$ 2,898.95	\$ 59,803.80
Trees And Shrubs	40.00	\$ 843.26	\$ 185.58	\$ -	\$ 1,028.84
Vacation	6.00	\$ 177.96	\$ -	\$ -	\$ 177.96
Vacation GL1	369.00	\$ 11,779.54	\$ -	\$ -	\$ 11,779.54
Grand Total	11,216.00	\$ 214,101.31	\$ 69,963.17	\$ 10,261.63	\$ 294,326.11



SOLID WASTE & COMMUNITY EVENTS

SOLID WASTE

The Department of Public Works is responsible for the coordination of the Solid Waste contract for Township residents. The Township has over 16,000 homes that are serviced once a week for trash, recycling and yard waste. The DPW Administrative staff works as a liaison between Rizzo Services and the Township residents, to provide quality customer service at all times.



Solid Waste Rates Effective July 1 2016 (per quarter)	
Single Family:	
Curbside	\$ 49.66
Doorside	\$ 99.36
Inside	\$ 116.64
Multi-Family (Condos/Apartments)	
Attached (individual)	\$ 43.16
Detached (individual)	\$ 48.55
Detached Doorside	\$ 99.33
Multi-Family Common	\$ 33.44



CONTRACT EXTENSION

On November 10, 2014, the Board approved to accept a proposal to extend the current solid waste contract with Rizzo Environmental Services. The original contract was an eight-year agreement that began in July of 2007 and was set to expire on June 30, 2015. After several months of negotiations, the Township Board approved a proposal to extend the contact for an additional eight years, which extends the service period to June 30, 2023. The rates increased by 8% on July 1, 2015; for the typical curbside service this increased the quarterly rate of \$45.98 to \$49.66, an increase of \$14.72 a year or just \$0.28 a week. The rates will now remain steady, with no increases, for the entire length of the contract. The new contact keeps in place all the current services that Township residents previously enjoyed such as unlimited weekly trash, bulk items, recycle and yard waste pickup. In addition, the recycling program was enhanced to include a new Recycling Rewards program and free 65-gallon, rolling, recycling carts for those who request one.

COMMUNITY EVENTS

The Township puts on several annual and bi-annual events throughout the year. Coordination, communication and planning amongst Township staff, contractors, volunteers and Township residents is the key to these events coming together successfully year after year.

Household Hazardous Waste Days

The Department of Public Works is responsible for the coordination and staging of the semi-annual drop off days for Township residents. The DPW staff works very closely with the Solid Waste contractor to provide this safe and effective event on the first Saturday of the month in May and October of each year. The participation for this event averages 800 - 1,000 residents, per event, bringing in household hazardous waste to be disposed of properly. During the events the Township sponsors a mercury thermometer exchange, offering residents to turn in a mercury thermometer for a new digital one. The staff sets up signs for traffic flow and checks various forms of identification of residents participating in the events. The cost of each event averages \$60,000.



COMMUNITY EVENTS

Electronic Recycling, Medication Disposal & Paper Shredding Event

The April 18, 2015 Electronic Recycling, Medication Disposal & Paper Shredding Event was a big success. In total, we had approximately 975 vehicles that came through the drop-off line and our residents appeared to utilize all the available services equally. Approximately 23,000 pounds of paper was shredded and recycled and a semi-truck was filled with over 37,000 pounds of electronics were demanufactured and then recycled as well. In addition to the paper and electronics the event also took in approximately eight 55-gallon drums of unwanted or expired medications.



Clean Sweep

The Department of Public Works is responsible for the coordination and staging of this annual event that has become very popular with Township residents. This event coincides with Earth Day in April each year. Residents are encouraged to clean up areas throughout their subdivisions and entrances to the subdivisions that get littered with debris during the winter months. The Township, along with the Solid Waste contractor, provides residents with paper lawn leaf bags and large orange trash bags to collect debris and litter. This event is a volunteer event and offers local high school students the opportunity to earn community service for their participation. The total trash and debris that was collected during this year's event was 7,200lbs of trash 17,000lbs of compost.

