



# BLOOMFIELD TOWNSHIP NEWSLETTER

## Events coincide with Earth Day celebration

Electronics recycling offered again



To help protect our environment and offer residents an additional service Bloomfield Township will host an Electronics Recycling, Medication Disposal & Paper Shredding Event on Saturday, April 19 from 9 a.m. to 2 p.m. at the Bloomfield Township civic complex. The event coincides with Earth Day and Clean Sweep activities. No businesses or business equipment of any kind is allowed.

The following residential electronic waste

*Please see **Earth Day** on page 3*

## Ceremony kicks off Capital Improvement Program construction

The public is invited to a Groundbreaking Ceremony on Wednesday, April 9, at 11 a.m. at Central Fire Station, located in the Bloomfield Township civic campus on Exeter Road, west off Telegraph Road and south of Long Lake Road. While some preliminary site work will have begun by that date, the Groundbreaking will officially mark the beginning of the construction of the new Senior Center, the Public Works facility and the Central Fire Station. The speeches will be few and brief. There will be light refreshments and music from the Straw Hat Band. Come and enjoy the festivity!

## Clean Sweep weekend tradition continues

Clean Sweep has been such a success that Bloomfield Township is again inviting neighborhood associations, school and community groups and residents to participate in the third annual Clean Sweep weekend, April 19 and 20.

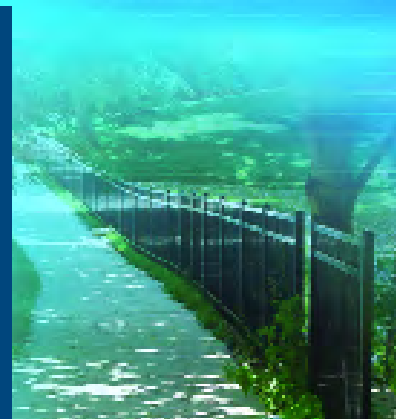
The Clean Sweep program is designed to spruce up the rights-of-way near safety paths, in neighborhoods and at the entrances to subdivisions within the Township. Last year 500 people participated to collect the equivalent of one-and-a-half garbage trucks full of trash and yard waste

To participate, residents are asked to register with the Dept. of Public Works by filling out the volunteer sign up sheet on the Township website at [www.bloomfieldtp.org](http://www.bloomfieldtp.org) or by calling

*Please see **Clean Sweep** on page 2*



School and community groups and even whole families join together to help keep Bloomfield Township a beautiful place to live. (Above) Students, their parents and staff of Eastover Elementary School volunteered last year to clean up medians and rights-of-way in the Township.



## BLOOMFIELD TOWNSHIP BOARD OF TRUSTEES 2008

### ELECTED OFFICIALS

#### ADMINISTRATION

Dave Payne, Supervisor  
Janet Roncelli, Clerk  
Dan Devine, Treasurer

#### TRUSTEES

David Buckley  
Neal J. Barnett  
Leo C. Savoie  
Greg Jamian

### APPOINTED POSITIONS

#### PLANNING COMMISSION

Jeff Salz, Chairman  
Scot Goldberg, Vice Chairman  
Sherry Stefanos, Secretary  
Richard Mintz,  
Jane Reisinger  
John Swoboda  
William Stark

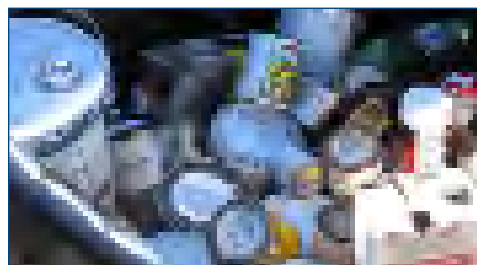
#### BOARD OF APPEALS

Corinne Khederian, Chairman  
Robert E. Taylor, Jr, Vice Chairman  
James Aldrich  
David Buckley  
Brian Kepes  
Lisa Seneker  
Sherry Stefanos  
Brian Henry, Alternate  
Carol Rosati, Alternate

# Hazardous Waste Drop Off Day set for May 3

Bloomfield Township will sponsor its Household Hazardous Waste Drop-Off Day Saturday, May 3rd, at the north parking lot of the Bloomfield Township administrative building, located on Exeter Road, west off Telegraph, south of Long Lake Rd. (look for signs on drop-off day).

This service is for residents only; proof of residency is required. The Township website at [www.bloomfieldtwp.org](http://www.bloomfieldtwp.org) contains an extensive list of acceptable materials for drop-off. Most households contain materials that can be hazardous and must be disposed of carefully. Improper disposal can be dangerous to people and the environment. A community the



Items like oil-based paint, pesticides and mercury thermometers can be properly and safely disposed of at the May 3rd Bloomfield Township Household Hazardous Waste (HHW) collection event

size of Bloomfield Township discards two tons of toilet bowl cleaner, seven tons of liquid household cleaner and two tons of motor oil each month.

## Knox Box allows access, prevents damage

The Knox Box gives fire and police quick access to the home in the event of an emergency. It is completely secure. The cost of the Knox Box and

installation is paid by the homeowner. For more information and to receive an application for purchase, call Bloomfield Township Fire Dept. @ 248.433.7745.



### BOARD OF TRUSTEES

TIME: 8:00 P.M.  
DATE: 2nd and 4th Monday  
LOCATION: Township Auditorium

### PLANNING COMMISSION

TIME: 7:00 P.M.  
DATE: 1st and the 3rd Monday  
LOCATION: Township Auditorium

### ZONING BOARD OF APPEALS

TIME: 7:00 P.M.  
DATE: 2nd Tuesday  
LOCATION: Township Auditorium

NOTE: The Charter Township of Bloomfield will provide necessary reasonable auxiliary aids and services at all meetings to individuals with disabilities. All such requests must be made at least five days prior to said meeting. Please contact the Bloomfield Township Clerk's Office.  
PO Box 489 Bloomfield Hills, MI 48303-0489  
248.433.7702  
Fax: 248.433.7714



### Clean Sweep from page 1

248.433.7709. The DPW office will provide plastic trash bags for general debris and paper bags for yard waste. Lawn signs will also be available at the Public Works office to promote Clean Sweep in neighborhoods.

Like last year, photos of participants will be posted on a special section of the Township's website.

To submit photos please send them electronically to [cable\\_dept@bloomfieldtwp.org](mailto:cable_dept@bloomfieldtwp.org) or mail prints to Cable Dept. 4200 Telegraph Road, P.O. Box 489, Bloomfield Hills, MI 48303-0489.

Names of individuals are optional, but please include the name of your



### YARD WORK

Trim trees so they don't hang over roofs. Also keep eaves and gutters free of leaves and other debris that burn easily. Clear weeds, brush and other flammable vegetation at least 30 feet away from your home. Store firewood away from structures.

Store gasoline in an approved container that is clearly marked. Keep it in a locked shed and store just enough to power your gasoline-fueled equipment. Make sure gasoline and all flammable liquids are well away from any heat source or flame.

- Never store gasoline in a vehicle.
- DO NOT smoke when using gasoline.
- Never refuel your mower while the motor is running and cool the motor before refueling.

### OPEN BURNING

The Bloomfield Township Burning Ordinance prohibits open burning except for small recreational fires at one or two-family dwellings. For more information pertaining to the Bloomfield Township Burning Ordinance please call 248-433-7745 or visit our website at:

[www.bloomfieldtwp.org](http://www.bloomfieldtwp.org)

### SMOKE DETECTORS

Make sure smoke detectors work. Test smoke detectors once a month and change batteries twice a year. An excellent reminder is Daylight Savings Time. Remember when you change your clock, also change your battery. It is also recommended that a smoke detector be located on every floor and in each bedroom.

### ESCAPE PLANS

Making and practicing an escape plan can be the difference between life and death. For more information on escape plans contact the Fire Prevention Division of the Fire Dept. at 433.7745. Office hours are M-F 8 a.m. through 4:30 p.m.

# Clerk's Office can help with new passport fees, procedures and passport card

Effective February 1, 2008, the U.S. Department of State has implemented new passport fees, passport procedures and a passport card. These changes are in effect at all passport acceptance facilities, including Bloomfield

Township. Fees have increased for the passport application and decreased for the execution fee. Passport applicants age 16 and over now pay \$75 and applicants age 15 and under pay \$60, payable to the U.S.

Department of State. The execution fee paid to Bloomfield Township as an acceptance facility has been reduced to \$25 per applicant.

Procedures for children age 15 and under have been revised. Along with the child, both parents must be present or one parent with written notarized consent from the second parent. All applicants age 15 and under must submit a birth certificate and a former passport, if applicable. The birth certificate is submitted as evidence of the child's relationship to the parent.

The passport card is new this year. The wallet-size card has limited use only for land and sea travel between the

United States and Canada, Mexico, the Caribbean, and Bermuda. The identification and citizenship documents required for the passport card are the same as those

*Please see **Passports** on page 7*



Township residents, Patrick, Kathleen, Clare (left) & Madelyn Parks (right) recently took advantage of the passport services offered by the Clerk's Office



## Spring spruce up tips

The Building Division suggests this spring time "To Do List" for property owners. The Building Division is available to answer questions regarding projects. Call 248.433.7715.

- Clean out gutters. Debris in gutters can clog downspouts.



- Adding extensions or splash blocks to downspouts directs water away from a home's foundation. Removing dead vegetation also helps maintain perimeter foundation drainage.

- Check for damage to your siding, shingles, roof antenna or satellite dish. The harsh winter winds can wreak havoc with these outside items. Now is a good time to touch-up the caulking around doors and windows.

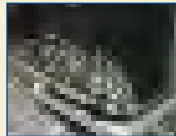
- Check exterior wall penetrations for electrical, cable/satellite, gas, or any other service for weather tightness.

- Check hose bibs and backflow preventers for leaks once they've been turned back on.

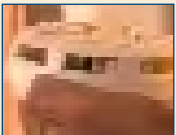
- Humidifier Shut-Down – When changing over from

the heating to cooling seasons, shut off the water to your humidifier, clean the unit out, and replace the evaporator pad. This prevents it from becoming hard and brittle and developing mold and mildew.

- Get the A.C. ready – Remove leaves and debris from the area around the unit(s) to provide good air flow.



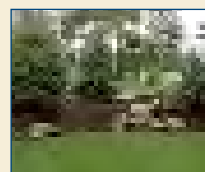
- Spring is a good time to begin a program of routinely changing the batteries in fire alarms and carbon monoxide sensors.



- Synchronize timed security lights to conform with longer daylight periods of spring and summer.

- Service lawn equipment before the season starts. Sharpen blades, change oil, lubricate all moving parts, and avoid an unexpected mechanical breakdown.

- Changes to a yard's grade can have a negative impact on neighboring properties. A



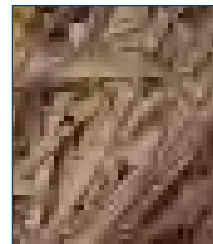
change in the flow of surface water can cause flooding downstream. Contact the Building Division for information regarding Fill Permits.

## Earth Day from page 1

items may be brought in for recycling or disposal: computer systems/laptops, televisions, keyboards, scanners, PDAs/pagers, cell phones and fax machines. No 'white goods' or household appliances (e.g. refrigerators, stoves, washer/dryer, dishwashers)

### Bulk Paper Shredding

Bulk paper shredding services will also be available as an option for safe and efficient disposal of residentially generated paper waste. Shredding services are

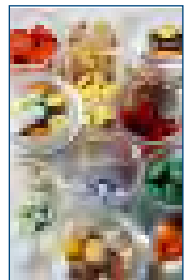


limited to residents who may bring a maximum of five boxes of paper for shredding. Content of the material is limited to office-grade paper; no newspaper, binders or computer disks can be included.

Sorry, no businesses or business equipment of any kind is allowed at this event.

### Pharmaceutical products drop off

Unwanted or unused over-the-counter and prescription pharmaceutical products can be



dropped off for disposal also. All sensitive information must be blacked

out, however the name of the medication must remain on the bottle.

### Hazardous Waste Collection

Remember to participate in the May 3<sup>rd</sup> Household Hazardous Waste collection event to properly dispose of items like oil-based paint, pesticides and mercury thermometers. We will be unable to collect any hazardous material at the April 19 event.



# Secondary water meters help save money, conserve water

Homeowners can see a reduction in the sewer portion of their water bill and track their own usage habits by installing a secondary water meter. A secondary meter measures the volume of water used exclusively outside the house. This is water that will not enter a sanitary sewer system and will not be applied to the calculation of the sewage disposal bill for the property.

of the water used by homeowners is for watering lawns, washing cars and other recreational uses.

Secondary meters are available for purchase through the Township's Water & Sewer Division. Costs associated with installation are the property owner's responsibility as is determining the necessary size of the secondary meter.

Installation of a secondary meter will require

plumbing changes within a home. Costs for these changes vary depending on the complexity of the home's existing plumbing.

As with any plumbing change, work should be done in compliance with Michigan plumbing codes. A Bloomfield Township Plumbing Permit is required and the installation must pass inspection by the Township Plumbing Inspector.



A plumber can determine the size of secondary water meter needed for a home. Costs for the secondary meter and its installation are a property owner's responsibility.

# New van expands service offerings to Bloomfield Township senior citizens

Bloomfield Township Senior Services Adult Day Service Friendship Club recently celebrated its first year of operation and earned high satisfaction levels from members attending.

One important addition to the program this year is transportation. With a grant from the Suburban Mobile Authority for Regional Transportation (SMART) the

wheelchair-equipped passenger van is able to extend respite time for Caregivers. Caregivers may now arrange rides to and from the Club.

Please encourage families you may know to learn more about how this partnership in caring can assist them. Contact Terri Ann Liller at 248.335.2813 for information or to schedule a visit.



This new van purchased with funds from SMART helps expand service offerings to Township seniors and their caregivers



## Bike Safely

With the warmer weather, residents will be spending more time outside. Bicycling is the favorite warm-weather past time of many. But to fully enjoy these activities, safety must be practiced. Observe the following guidelines from the National Safety Council to make spring safer:

- Obey traffic rules. Get acquainted with ordinances. Cyclists must follow the same rules as motorists.
- Ride in single file with traffic, not against it. Bicycling

two abreast can be dangerous. Bicyclists should stay as far right on the pavement as possible, watching for opening car doors, sewer gratings, soft shoulders, broken glass and other debris. Remember to keep a safe distance from the vehicle ahead.

- Make safe turns and cross intersections with care. Signal turns half a block before the intersection, using the correct hand signals (left arm straight out for left turn;



forearm up for right turn). When traffic is heavy and the cyclist has to turn left, it is best to dismount and walk the bicycle across both streets at the crosswalks.

- Never hitch on cars. A sudden stop or turn could send the cyclist flying into the path of another vehicle.
- Before riding into traffic: stop, look left, right, left again, and over your shoulder.
- Always be seen. During the day, cyclists should wear bright clothing. Nighttime cycling is not advised, but if riding at night is nec-



essary, retroreflective clothing, designed to bounce back motorists' headlight beams, will make cyclists more visible.



■ Wear a helmet. Head injuries cause 85 percent of all bicycling fatalities. The Council strongly urges all cyclists to wear helmets. The first body part to fly forward in a collision is usually the head, and with nothing but skin and bone to protect the brain from injury, the results can be disastrous.

# The 2007 Bloomfield Township Classic

The Bloomfield Township Classic will be back at Mercedes-Benz of Bloomfield Hills for its fourth year on Saturday, Aug. 16, between noon and 5 p.m. Along with the display of classic and specialty cars, the Classic will feature 50s and 60s music, convenient parking and great food and refreshments. The event is FREE to the public.



The Classic, held in conjunction with the Woodward Dream Cruise, is a car show, party and charity event started by a group of Township car enthusiasts looking to involve their neighbors in the largest one-day classic auto event in the world.

Net proceeds from the Classic go to support charities right here in the community: The Bloomfield Township Fire Dept. Charities, Oakland Family Services and the Bloomfield Optimists.

Call 248-433-7790 to enter your

pre-1972 classic or specialty car or find the entry form online at [www.bloomfieldtwp.org](http://www.bloomfieldtwp.org). This year two entry fees are available at \$100 and \$75. The \$100 entry fee comes with an official event shirt. Both entry levels come with the promise of a good time and an excellent vantage point from which to watch the action and mingle with neighbors and car enthusiasts. Car owners will be allowed to enter and exit the show at will between 1 p.m. and 5 p.m.



## Bloomfield Township Classic Registration Form

August 16, 2008, 1 p.m. to 5 p.m.  
Mercedes Benz of Bloomfield Hills  
Woodward south of Big Beaver

*Complete this form and return it to the address below.  
Shirt orders must be processed no later than June 20, 2008*

Name \_\_\_\_\_ Address \_\_\_\_\_

Telephone (home) \_\_\_\_\_ (work) \_\_\_\_\_ (cell) \_\_\_\_\_ (email) \_\_\_\_\_

\$100 registrants please indicate shirt size below. \$75 registrants can skip sizing information.

Shirt size/type: Mens \_\_\_\_\_ Womens \_\_\_\_\_ Size S \_\_\_\_\_ M \_\_\_\_\_ L \_\_\_\_\_ XL \_\_\_\_\_

### Vehicle information

Year \_\_\_\_\_ Make \_\_\_\_\_ Model \_\_\_\_\_ Color \_\_\_\_\_ VIN \_\_\_\_\_

Insurance Company \_\_\_\_\_ Policy# \_\_\_\_\_

Owner's signature \_\_\_\_\_ Date \_\_\_\_\_

Remember to include: Completed application, check for \$100.00 (with event shirt or \$75 without event shirt) made payable to "Oakland Family Services.

Send to:  
Oakland Family Services  
Attn: Woodward Dream Cruise  
114 Orchard Lake Road  
Pontiac, MI 48341

Net proceeds benefit Oakland Family Services, Bloomfield Optimist Club and Bloomfield Fire Department Charities. For info call 248-433-7790. Vehicles will be displayed at Mercedes-Benz of Bloomfield Hills located at 36600 Woodward, south of Big Beaver. Vehicles will be allowed to enter and exit at will between 1 p.m. and 5 p.m., Sat., Aug. 16. The use of the dealership has been generously donated by its owner, Charles Ghesquiere.



Bloomfield Hills  
Optimist Club

## Code & Ordinance Division striving to keep Township neighborhoods beautiful

The Bloomfield Township Planning, Building & Ordinance Dept. is working hard to ensure neighborhoods are maintained to the high standards required by Township ordinance. This list illustrates a few of the ordinance requirements the department will address this spring.

### Property Maintenance

House painting, exterior structure maintenance, overgrown landscaping, weeds, and lawn maintenance.

### Open Storage

Unlicensed or inoperable vehicles, placement of receptacles for garbage collection, recreational vehicles, snow-

mobiles, boats, trailers and all other forms of recreational equipment must be placed out of public view

### Accessory Structures

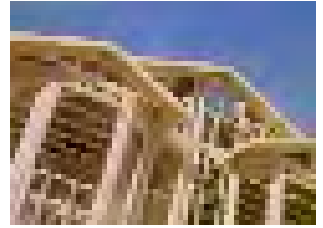
Any structure that is built above grade and is not attached to the principle structure of the home will require a variance through the Zoning Board of Appeals process.



### Construction Sites

Must be maintained in a neat and orderly manner with dumpsters emptied on a routine basis; streets swept at the close of construction each day and regulation of construction noise during the

hours of 7 a.m. to 6 p.m. For more information about Township code and ordinance requirements, please contact our office at 248.594.2845 during normal business hours.



## Capital Improvement Program progresses on schedule

With the program manager, construction manager and architects in place, recent activities related to the Capital Improvement Program have focused on receiving bids and awarding contracts for site work, landscape, and various construction work categories. Construction of the new Senior Center will have started by the time this newsletter is mailed.

Construction of parking area improvements for the Police Dept. is targeted to start in

mid-April. Construction of the DPW facilities and Central Fire Station should start later in the spring. All work is planned to be completed in early 2010.

Renovation of the Westview Fire Station, included in the Capital Improvement Program, is more than half finished with total completion expected by the end of April. Detailed construction updates can be found on the website at [www.bloomfieldtwp.org](http://www.bloomfieldtwp.org).



## Township seeks permanent injunction against Comcast

At its meeting on February 11, 2008, the Township Board of Trustees voted unanimously to join Meridian Township and the City of Dearborn in legal action against Comcast to prevent Comcast from moving our Public, Education and Government (PEG) channels to the 900 level on the digital tier. Meridian Township and Dearborn won a temporary restraining order in federal court on January 14 to this effect, and a permanent injunction is now necessary to make sure the channels will stay in their current position on the basic (analog) tier.

Comcast proposed the move in November 2007, to

be effective January 15, 2008. It required basic (analog) subscribers to obtain a digital converter box to see Bloomfield Community Television (channel 15), the Bloomfield Hills Schools channel (16) and the Birmingham Public Schools channel (17). Although Comcast said there would be no charge for the box, some Township residents were given contradictory information by Comcast's customer service representatives. Furthermore, some residents were charged installation fees.

In addition to objecting to the extra equipment and extra fees, the Township Board did not want PEG

channels relocated to a less favorable position on the channel lineup. Many viewers do not normally go up to the 900 level of the digital tier and the Board wanted to keep the channels easily accessible.

Providing PEG channels is considered to be a social obligation of cable providers throughout the United States. They are charged with this responsibility in return for their use of the public right-of-way to lay cable. Bloomfield Township has a non-exclusive local franchise with Comcast and has always been ready to enter into franchise agreements with competing cable or video providers. AT&T was

granted a state franchise to provide video services in the Township in April 2007. It currently provides services to a small portion of the Township.

Neither the state nor the local franchise gives the local government any authority over rates. Congress deregulated the cable industry in 1996.

Bloomfield Township serves as the Local Franchise Authority and intervenes for residents who are unable to resolve service disputes with the cable or video provider. You may call 248.433.7792 if you would like to register a customer service complaint.



## A NOTE FROM

Dave Payne, Bloomfield Township Supervisor

### New construction cause for optimism

While Michigan's businesses are generally characterized as being hard-hit by the current economic downturn, a drive up and down Telegraph Road in Bloomfield Township tells a different story. Several corporations have decided that Bloomfield Township is a good place to invest in both new development and redevelopment and their activity, in turn, has leveraged additional development and improvements.

Sunrise Senior Living is adding a second residential facility on Telegraph Road. The first, on Telegraph north of Square Lake, was completed in 2006. The second, on Telegraph south of Maple, is

scheduled for completion in December of 2008.

The North American headquarters for Smart Car USA received international attention when it opened, along with a Smart Car dealership, in January 2008 on Telegraph north of Square Lake Road.

The Costco store, also on Telegraph north of Square Lake, will be demolished and then rebuilt, bigger and better, at the same site. We anticipate the store will temporarily close sometime in March and reopen in October 2008. A new Costco gas station has already opened nearby. The Township's Planning Department has received inquiries from developers who

are encouraged by Costco's commitment to Bloomfield Township and are considering bringing other businesses to the immediate area as a result.

A new L.A. Fitness is under construction on the other side of Telegraph, south of Carl's Golfland, and is scheduled to open in May of 2008.

The new Target, near the northwest corner of Telegraph and Square Lake, will be one of the most architecturally significant Target stores in the country. It will be a bi-level structure with parking beneath the building. The design includes a variety of innovative building materials and the site will be heavily

landscaped. It is scheduled to open in the fall of 2008.

#### Median Beautification Project

In addition to the general benefits of having healthy businesses in the Township, the Township wins in yet another way. Several of the new businesses, following the generous lead of Target, are donating funds above and beyond their normal planning and building permit fees for the Telegraph Road Median Beautification Project. The Beautification Project will result in Telegraph's medians having new landscaping featuring deciduous trees, evergreens and perennials. The stores will benefit by having attractive surroundings for their customers and the Township will benefit by having a major thoroughfare reflect the same standards as its residential neighborhoods.

## Large gatherings may require a special permit



With the growing excitement generated by the upcoming PGA Championship this August, many Township residents may wish to host events or parties at their homes. For the safety and enjoyment of the PGA Championship for all residents, Township ordinance states that certain events require a Special Event Permit.

A Special Event Permit is required for large outdoor gatherings, setting up a tent or other temporary struc-

tures on the property, temporary signs, charging for parking vehicles on the property and overnight parking of trailers, to name just a few examples.



The Special Event Application can be found on the Township's website at [www.bloomfieldtwp.org](http://www.bloomfieldtwp.org), under "forms" and the "Planning Department" sub menu. Please contact the Planning Department with any questions if you are considering hosting a special event.

## Passports *from page 3*

required for the passport book. Validity of the passport card is 10 years for adults 16 and over and five years for children 15 and under. The passport card does not operate globally and is designed for the specific needs of the northern and southern border resident communities. In contrast, the traditional passport book operates globally and remains the premier internationally accepted travel document.

For age 16 and over, the cost of the passport card is \$20. For age 15 and under, the cost is \$10. In addition, each card requires an execution fee of \$25 payable to Bloomfield Township. If applied for in combination with a new passport, there is

only one execution fee. Photos are required and Bloomfield Township offers passport photo service on site for \$10. We anticipate availability of the passport card in the spring of 2008. However, applications are available now for the passport card in the Clerk's Office or online at [www.travel.state.gov](http://www.travel.state.gov).

For further information, check our Township website at [www.bloomfieldtwp.org](http://www.bloomfieldtwp.org) or the federal website at [www.travel.state.gov](http://www.travel.state.gov). The Clerk's Office is available to process passport applications and answer questions from 8 a.m. to 3:30 p.m. daily and until 6 p.m. on the second and fourth Monday of the month.



**On our Cover**



Environmental Services Manager Meghan Bonfiglio feels Bloomfield Township residents are very good stewards of the environment.

Bloomfield Township's Environmental Services Manager Meghan Bonfiglio is passionate about environmental issues and very happy that her job allows her to help educate residents interested in protecting the Township's natural resources. Meghan holds both a bachelor's and master's degree from the University of Michigan in Environmental Science and has been employed with the Township since 2004.

Meghan is responsible for implementing and managing mandated water quality programs to protect our watershed and managing projects of special interest to our Township residents that may have a potential impact on the environment. In addition, she provides plan reviews and technical support for new developments and public works projects in the Township.

Meghan, who served as an environmental consultant to a private engineering firm prior

to joining the Township, said she is constantly impressed at the level of interest and participation in environmental programs Township residents display.

"I love my job and feel Bloomfield Township is a very proactive community. We are fortunate to have a population that is driven to protect the environment. That, in turn, drives us," she said.

Meghan and her husband Carl are expecting their second child this April.

## 2008 will see a busy election season on Bloomfield Township

Township residents in the Pontiac School District will have the opportunity to vote on Tuesday, May 6, 2008, for one member of the Board of Education. The term is four

years from 07/01/2008 to 6/30/2012. One polling location, Bloomfield Hills Baptist Church, will be open to accommodate residents in the Pontiac School district.

Absentee voter applications are available online and will be sent to residents upon request and those residents on the permanent absentee list within the Pontiac School District.

Later this year, all voters will have the opportunity to cast their vote in the August 5, 2008 Primary Election and the November 4, 2008 General Election.

**TOWNSHIP DIRECTORY**

433-7700	Administration
433-7712	Accounting
433-7710	Assessor's Office
433-7715	Building Dept.
433-7702	Clerk's Office
433-7790	Community Cable
594-2800	Engineering & Env.
433-7745	Fire Non-Emergency
433-7750	Police Department
433-7750	Administration
433-7755	Non-Emergency
433-7757	Animal Welfare
433-7760	Investigations
433-7775	Alarm Info
433-7777	Property
433-7776	Records
433-7709	Road Division
433-7731	Water & Sewer
341-6450	Senior Services
335-2813	Adult Day Service
433-7705	Treasurer's Office

4200 TELEGRAPH ROAD  
PO BOX 489  
BLOOMFIELD HILLS MI 48303-0489

**BLOOMFIELD TOWNSHIP**

