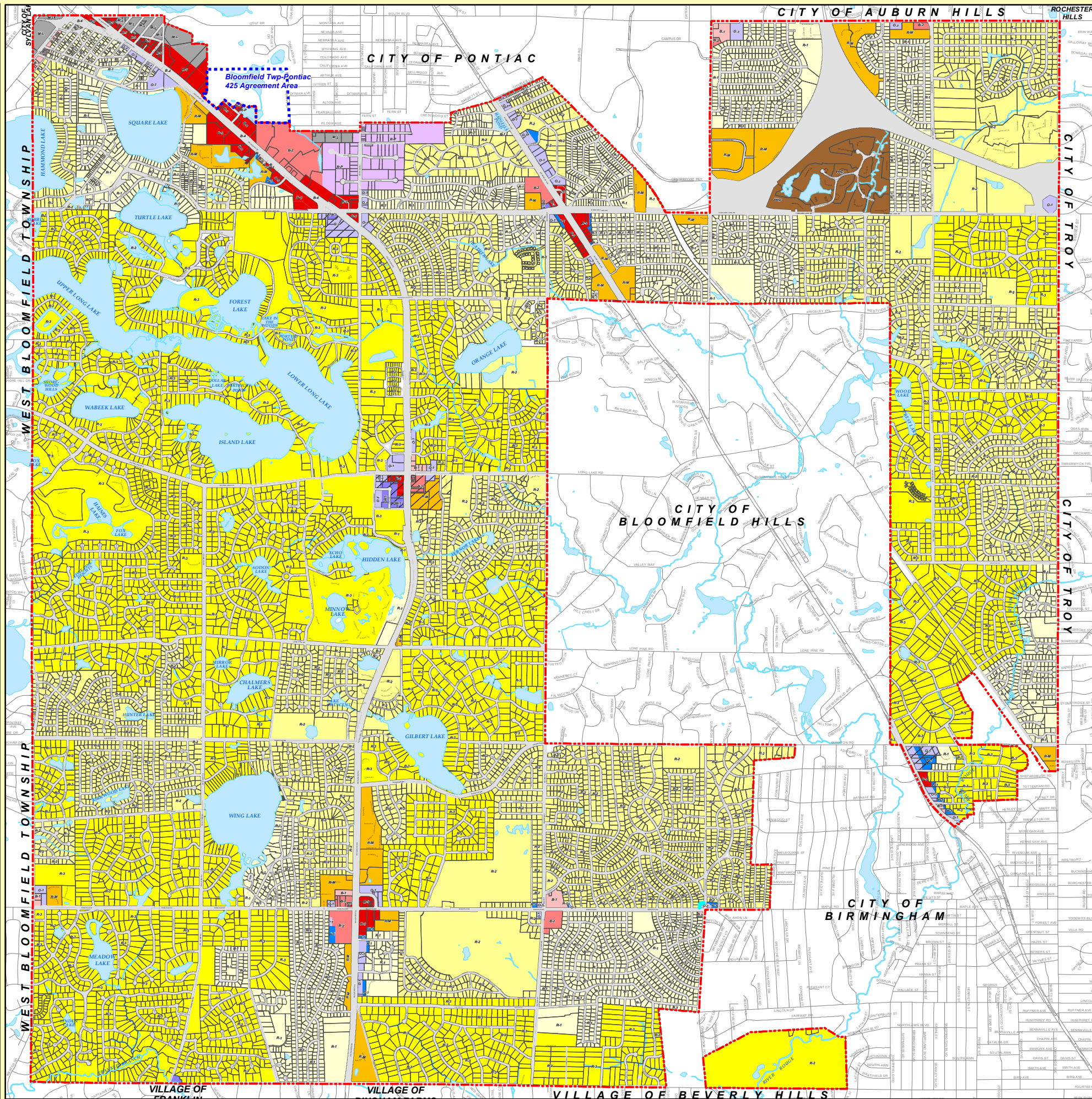


# Bloomfield Township - Zoning Map



## LEGEND

Zoning Designations	Acres	Percent of Total:
R-1 ONE FAMILY RESIDENTIAL DISTRICT	2,013	14.5 %
R-2 ONE FAMILY RESIDENTIAL DISTRICT	3,846	27.8 %
R-3 ONE FAMILY RESIDENTIAL DISTRICT	6,799	49.1 %
R-M MULTIPLE FAMILY RESIDENTIAL DISTRICT	344	2.5 %
PRD PLANNED RESIDENTIAL DEV DISTRICT	170	1.2 %
B-1 LOCAL BUSINESS DISTRICT	27	0.2%
B-2 COMMUNITY BUSINESS DISTRICT	104	0.7 %
B-3 GENERAL BUSINESS DISTRICT	156	1.1 %
B-4 PLANNED BUSINESS DISTRICT*	NA	NA %
O-1 OFFICE BUILDING DISTRICT	127	1.0 %
OR-1 OFFICE RETAIL DISTRICT	15	0.1 %
M-X MIXED USE OVERLAY DISTRICT	NA	NA %
R-P RESEARCH PARK DISTRICT	117	0.8 %
P-1 VEHICULAR PARKING DISTRICT	83	0.6 %
M-L LIGHT MANUFACTURING DISTRICT	55	0.4 %
<b>Total</b>	<b>13,856</b>	<b>100%</b>

\* PLANNED BUSINESS DISTRICT (B-4) - Properties located along the corridor of Telegraph Road (US 24), North of Square Lake Road, with frontage or direct access to Telegraph Road. See Zoning Ordinance Section 42-3.1.16.

- PARCEL BOUNDARY
- RIGHT-OF-WAY
- LAKE OR POND
- STREAM OR RIVER
- SWAMP OR MARSH
- STREAM OR RIVERS
- PONTIAC 425 AGREEMENT BOUNDARY
- TOWNSHIP BOUNDARY

Map Publish Date: August 13, 2020

Sources:  
 Bloomfield Township GIS  
 Bloomfield Township Planning  
 Oakland County GIS Utility

Prepared by:  
 Bloomfield Township GIS

Scale: 1 inch = 3,200 feet

0 1,600 3,200 6,400 Feet

The information provided here is intended for reference purposes only. It was compiled from a variety of available sources with varying degrees of accuracy. It is not a legally recorded map or survey and is not intended to be used as one. Bloomfield Township assumes no responsibility for errors that arise from the use of the data.