



CHARTER TOWNSHIP OF BLOOMFIELD

RESCHEDULED

NOTICE OF PUBLIC HEARING

**SHELL GAS STATION/THREE M ENTERPRISES INC.
3690 W. MAPLE ROAD**

BOARD OF TRUSTEES

Please be advised that the Public Hearing scheduled for Monday, November 9, 2015, has been rescheduled per the applicant's request. The new Public Hearing date is Monday, November 23, 2015.

NOTICE IS HEREBY GIVEN that the Board of Trustees of the Charter Township of Bloomfield, Oakland County, Michigan will hold a Public Hearing at the following time and place:

Monday, November 23, 2015
7:00 p.m.
Bloomfield Township Hall
4200 Telegraph Road
Bloomfield Hills, MI 48302

At the Public Hearing, the Board will consider a site plan/special land use proposal to allow the existing Shell gas station, located at the northeast corner of Maple Road and Lahser Road (Village Knoll Shopping Center), to expand its hours of operation beyond 7 a.m. and 9 p.m. to operate 24 hours. Comments regarding this proposal may be provided at the public hearing or by contacting the Planning Division at (248) 433-7795.

SIDWELL NO: 19-27-353-001

JAN RONCELLI, TOWNSHIP CLERK

NOTE: The Charter Township of Bloomfield will provide necessary, reasonable auxiliary aids and services at all meetings to individuals with disabilities. All such requests must be made at least five days prior to said meeting. Individuals with disabilities requiring auxiliary aids or services should contact the Bloomfield Township Clerk's Office by writing or calling the following: Clerk's Office, P. O. Box 489, Bloomfield Hills MI 48303-0489 - Telephone: 248-433-7702.

Posted: October 29, 2015



CHARTER TOWNSHIP OF BLOOMFIELD

NOTICE OF PUBLIC HEARING

**SHELL GAS STATION/THREE M ENTERPRISES INC.
3690 W. MAPLE ROAD**

BOARD OF TRUSTEES

NOTICE IS HEREBY GIVEN that the Board of Trustees of the Charter Township of Bloomfield, Oakland County, Michigan will hold a Public Hearing at the following time and place:

Monday, November 9, 2015
7:00 p.m.
Bloomfield Township Hall
4200 Telegraph Road
Bloomfield Hills, MI 48302

At the Public Hearing, the Board will consider a site plan/special land use proposal to allow the existing Shell gas station, located at the northeast corner of Maple Road and Lahser Road (Village Knoll Shopping Center), to expand its hours of operation beyond 7 a.m. and 9 p.m. to operate 24 hours. Comments regarding this proposal may be provided at the public hearing or by contacting the Planning Division at (248) 433-7795.

SIDWELL NO: 19-27-353-001

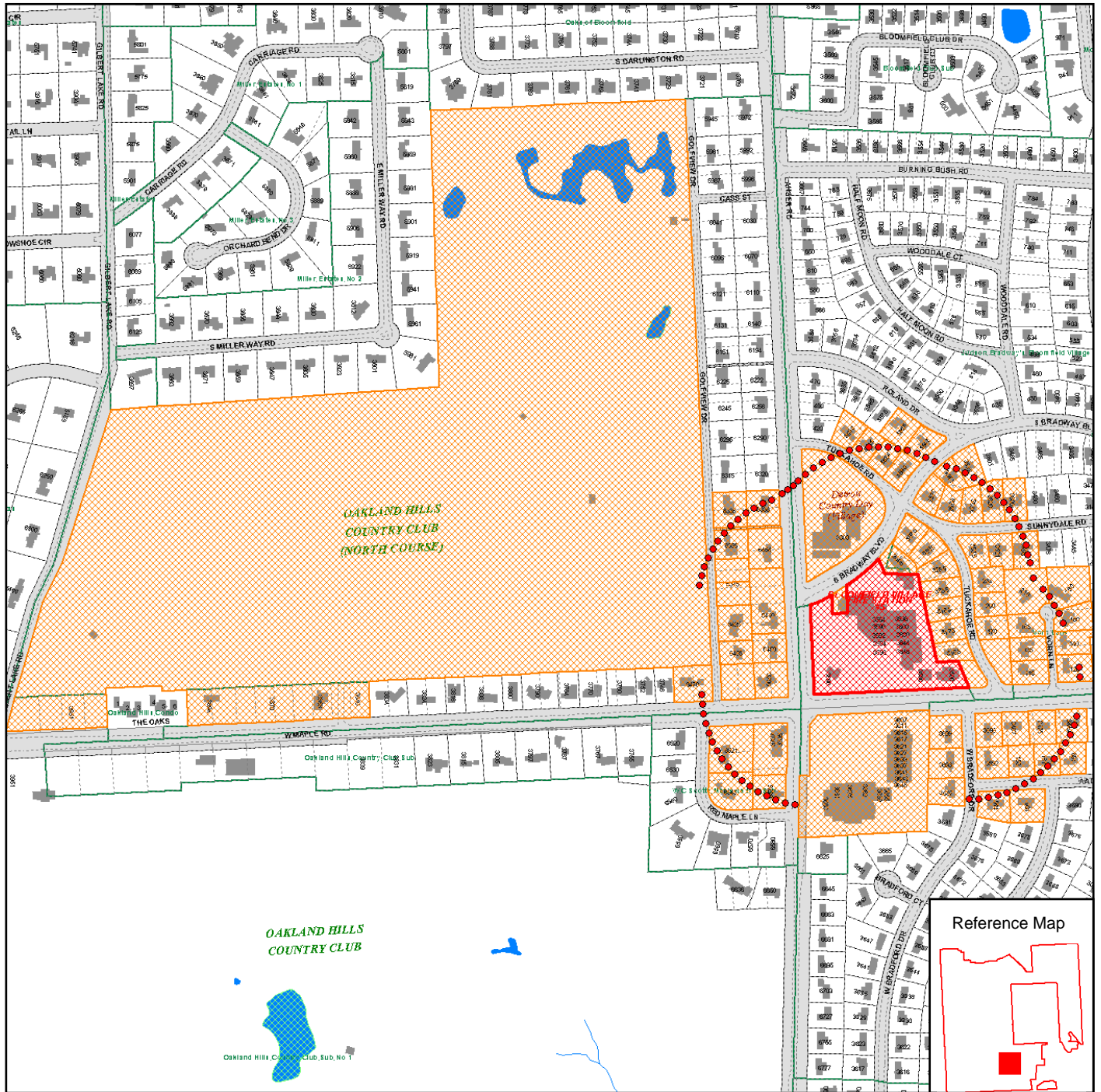
JAN RONCELLI, TOWNSHIP CLERK

NOTE: The Charter Township of Bloomfield will provide necessary, reasonable auxiliary aids and services at all meetings to individuals with disabilities. All such requests must be made at least five days prior to said meeting. Individuals with disabilities requiring auxiliary aids or services should contact the Bloomfield Township Clerk's Office by writing or calling the following: Clerk's Office, P. O. Box 489, Bloomfield Hills MI 48303-0489 - Telephone: 248-433-7702.

Posted: October 22, 2015



Bloomfield Township - CivicSight Map



MAP LEGEND:

- /// LOT LINES
- ▨ MARSH - SWAMP
- /// ROAD EDGE - PLANIMETRICS - 2000
- ▭ TOWNSHIP LIMITS
- ▭ SUB DIVISIONS
- /// RIVERS - STREAMS
- OPEN WATER
- BUILDING OUTLINE
- ▭ PONTIAC 425 AGREEMENT
- ▭ SIDWELL MAP HOTLINK
- ▭ PARCEL LAYER
- ▭ NO THROUGH ROADS
- ▭ RIGHT-OF-WAY

Map Scale: 1 inch = 666 feet

Map Date: 10/22/2015

Data Date: October 14, 2015



Sources: Bloomfield Township, Oakland County GIS Utility, River's Edge GIS, LLC.

Disclaimer:
The information provided here is intended for reference purposes only. It was compiled from a variety of available sources with varying degrees of accuracy. It is not a legally recorded map or survey and is not intended to be used as one. Bloomfield Township assumes no responsibility for errors that arise from the use of the data.