



CHARTER TOWNSHIP OF BLOOMFIELD

NOTICE OF PUBLIC HEARING

**STAMFORD UNITED
2101 S. TELEGRAPH ROAD**

BOARD OF TRUSTEES

NOTICE IS HEREBY GIVEN that the Board of Trustees of the Charter Township of Bloomfield, Oakland County, Michigan will hold a Public Hearing at the following time and place:

Monday, May 23, 2016
7:00 p.m.
Bloomfield Township Hall
4200 Telegraph Road
Bloomfield Hills, MI 48302

At the Public Hearing, the Board will consider a final site plan/special land use proposal for an At Home store at the former Kmart/Sears building located on Telegraph Road, north of Square Lake Road, and to request extending the allowable 7:00 a.m. to 9:00 p.m. hours of operation to 10:00 p.m. Comments regarding this proposal may be provided at the public hearing or by contacting the Planning Division at (248) 433-7795.

SIDWELL NO's: 19-05-326-004

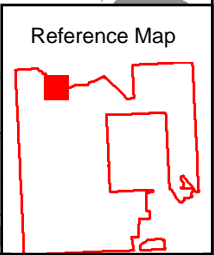
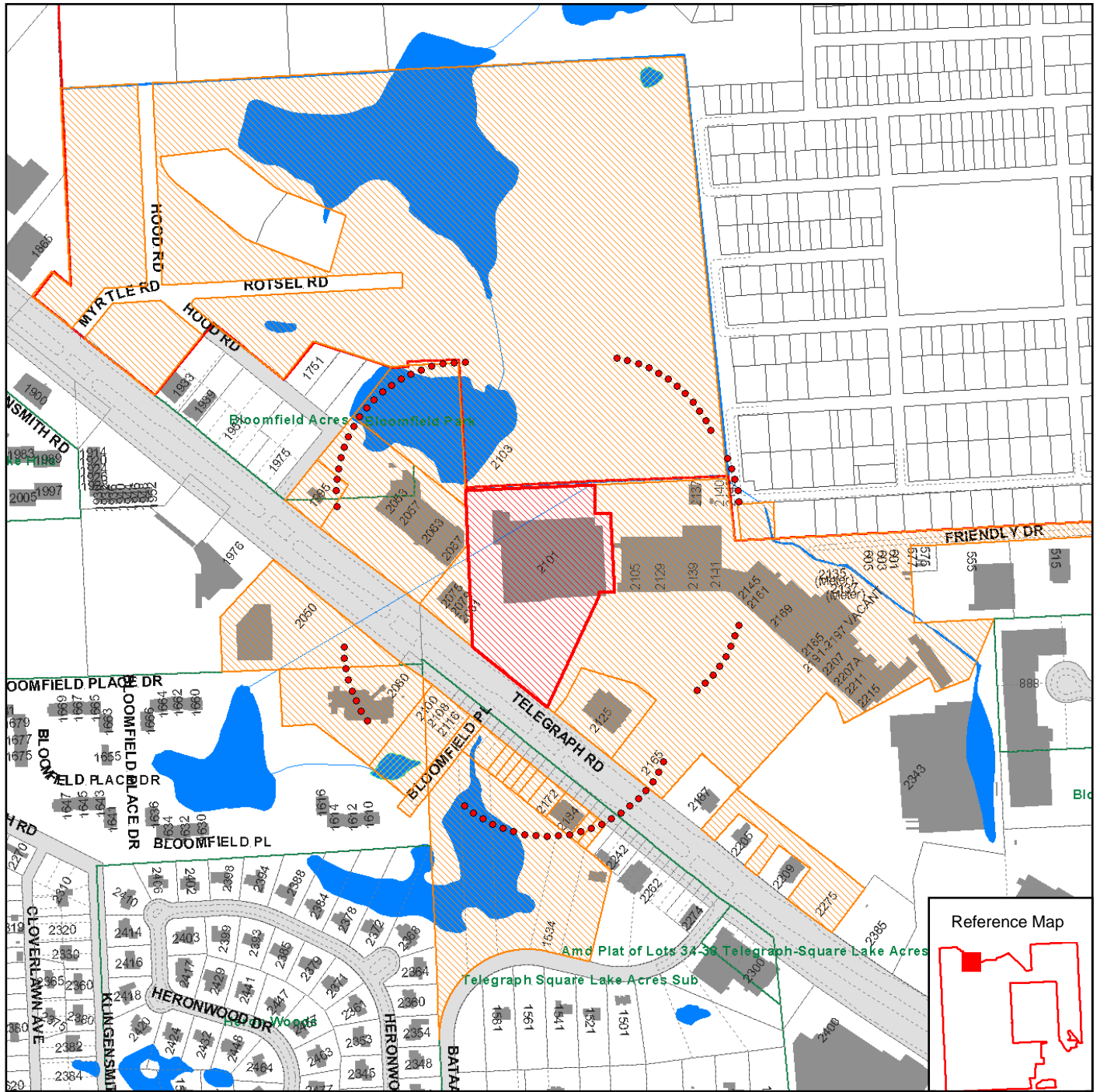
JAN RONCELLI, TOWNSHIP CLERK

NOTE: The Charter Township of Bloomfield will provide necessary, reasonable auxiliary aids and services at all meetings to individuals with disabilities. All such requests must be made at least five days prior to said meeting. Individuals with disabilities requiring auxiliary aids or services should contact the Bloomfield Township Clerk's Office by writing or calling the following: Clerk's Office, P. O. Box 489, Bloomfield Hills MI 48303-0489 - Telephone: 248-433-7702.

Posted: May 5, 2016



Bloomfield Township - CivicSight Map



MAP LEGEND:

- LOT LINES
- MARSH - SWAMP
- ROAD EDGE - PLANIMETRICS - 2000
- TOWNSHIP LIMITS
- SUB DIVISIONS
- RIVERS - STREAMS
- OPEN WATER
- BUILDING OUTLINE
- PONTIAC 425 AGREEMENT
- PARCEL LAYER
- NO THROUGH ROADS
- RIGHT-OF-WAY

Map Scale: 1 inch = 579 feet

Map Date: 5/03/2016

Data Date: March 16, 2016



Sources: Bloomfield Township, Oakland County GIS Utility, River's Edge GIS, LLC.

Disclaimer:
The information provided here is intended for reference purposes only. It was compiled from a variety of available sources with varying degrees of accuracy. It is not a legally recorded map or survey and is not intended to be used as one. Bloomfield Township assumes no responsibility for errors that arise from the use of the data.