



CHARTER TOWNSHIP OF BLOOMFIELD

NOTICE OF PUBLIC HEARING

**VILLAGE KNOLL MEDICAL CENTER / THREE M ENTERPRISES, INC.
VILLAGE KNOLL SHOPPING CENTER
3684 W. MAPLE ROAD**

BOARD OF TRUSTEES

NOTICE IS HEREBY GIVEN that the Board of Trustees of the Charter Township of Bloomfield, Oakland County, Michigan will hold a Public Hearing at the following time and place:

Tuesday, May 27, 2014
7:00 p.m.
Bloomfield Township Hall
4200 Telegraph Road
Bloomfield Hills, MI 48302

At the Public Hearing, the Board will consider a final site plan for a lobby addition to the existing Village Knoll Medical Office, located in the rear of Village Knoll Shopping Center at the northeasterly corner of Lahser Road and W. Maple Road. Comments regarding this proposal may be provided at the public hearing or by contacting the Planning Division at (248) 433-7795.

SIDWELL NO: 19-27-353-001

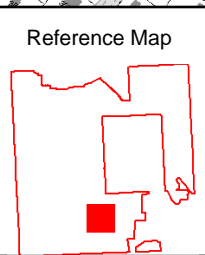
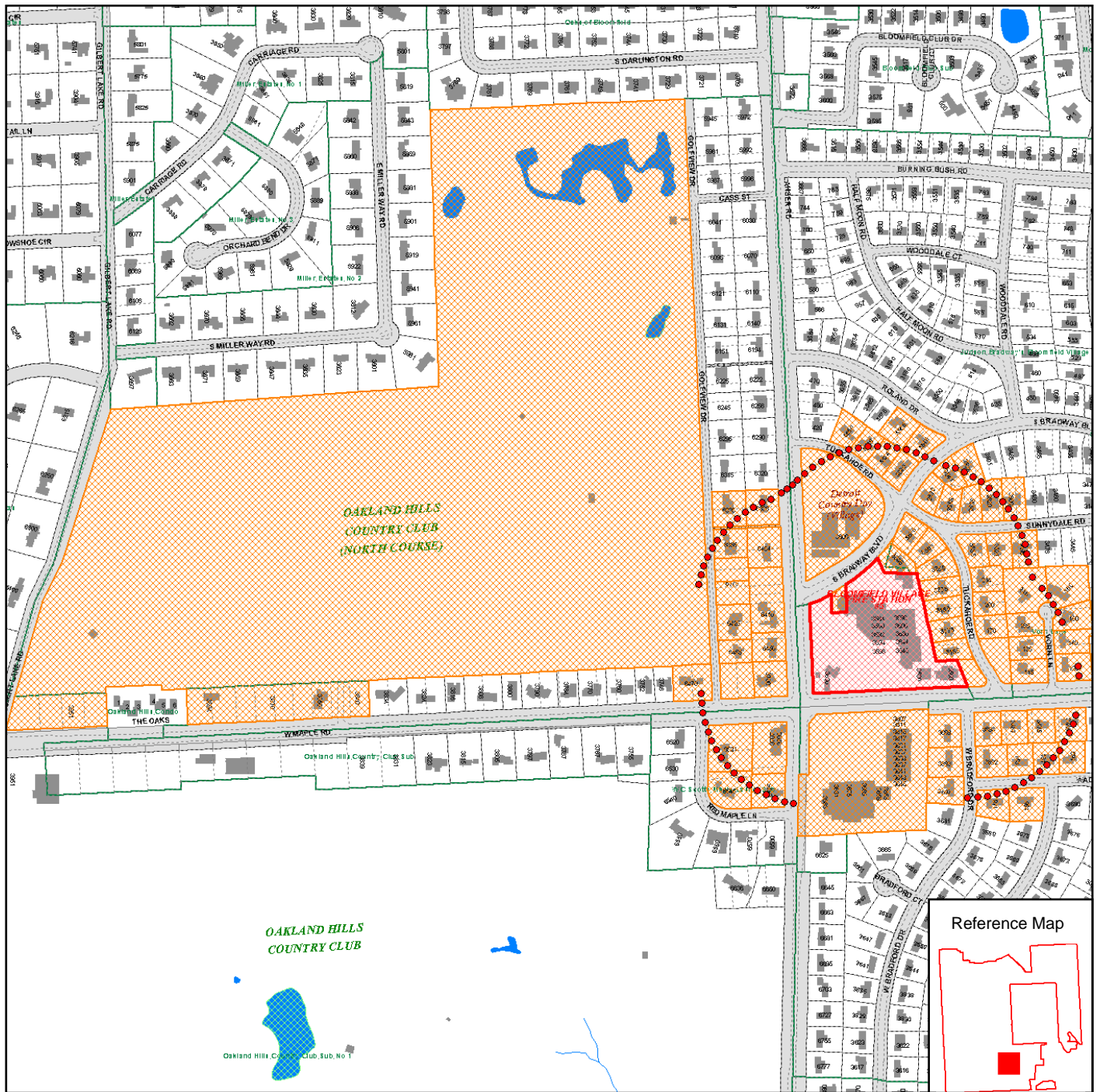
JAN RONCELLI, TOWNSHIP CLERK

NOTE: The Charter Township of Bloomfield will provide necessary, reasonable auxiliary aids and services at all meetings to individuals with disabilities. All such requests must be made at least five days prior to said meeting. Individuals with disabilities requiring auxiliary aids or services should contact the Bloomfield Township Clerk's Office by writing or calling the following: Clerk's Office, P. O. Box 489, Bloomfield Hills MI 48303-0489 - Telephone: 248-433-7702.

Posted: May 12, 2014



Bloomfield Township - CivicSight Map



- MAP LEGEND:**
- /// LOT LINES
 - ▨ MARSH - SWAMP
 - /// ROAD EDGE - PLANIMETRICS - 2000
 - ▭ TOWNSHIP LIMITS
 - ▭ SUB DIVISIONS
 - /// RIVERS - STREAMS
 - OPEN WATER
 - BUILDING OUTLINE
 - ▭ PONTIAC 425 AGREEMENT
 - ▭ SIDWELL MAP HOTLINK
 - ▭ PARCEL LAYER
 - ▭ NO THROUGH ROADS
 - ▭ RIGHT-OF-WAY

Map Scale: 1 inch = 666 feet
 Map Date: 5/07/2014
 Data Date: April 22, 2014



Sources: Bloomfield Township, Oakland County GIS Utility, River's Edge GIS, LLC.

Disclaimer:
 The information provided here is intended for reference purposes only. It was compiled from a variety of available sources with varying degrees of accuracy. It is not a legally recorded map or survey and is not intended to be used as one. Bloomfield Township assumes no responsibility for errors that arise from the use of the data.