



Water
Solid Waste
Roads
Water
Building
Motor Pool
Grounds
Customer Service
Water
Motor Pool
Solid Waste
Roads

ANNUAL REPORT 2014

Sewer
Building
Motor Pool
Maint.
Grounds
Solid Waste
Customer Service
Water
Roads
Roads
Motor Pool

CONTACT US:

For all questions regarding any DPW services or operations:
Our office hours are Monday – Thursday, 7:00 AM – 5:30 PM

PHONE: 248-594-2800

FAX: 248-594-2810

ADMINISTRATION

Thomas W. Trice – DPW Director
Rich Davis – DPW Superintendent
Katie M. Schlutow – Public Works Manager

ROAD DIVISION

Duane Poole – Road Foreman
road@bloomfieldtp.org
Snow Emergency Hotline: 248-594-2848

WATER & SEWER DIVISION

Ken Brown – Water Foreman
water@bloomfieldtp.org
Water Emergency Line: 248-433-7730

FLEET & BUILDING MAINTENANCE

Noah Mehalski – Fleet/Facilities Manager

GROUNDS MAINTENANCE

Dean Begley – Grounds Foreman

RIZZO SERVICES

1-866-772-8900

Message from the Director:

Public Works is an integral part of the many services that are provided to the Township residents. Whether it be the actual infrastructure of our roads or water & sewer systems or the many vehicles and equipment utilized by Police & Fire services or the buildings that Township employees come to work in every day, Public Works is responsible for maintaining all of those many systems and assets. We achieve this through the labor and commitment that our highly skilled employees put into their jobs every day. They are the reason the Township's services stand above the rest.

On behalf of the entire staff of the Department of Public Works, it is my pleasure to present the 2014 Annual Report. I hope this report provides good insight into the services we provide as well as a better understanding of our daily operations.

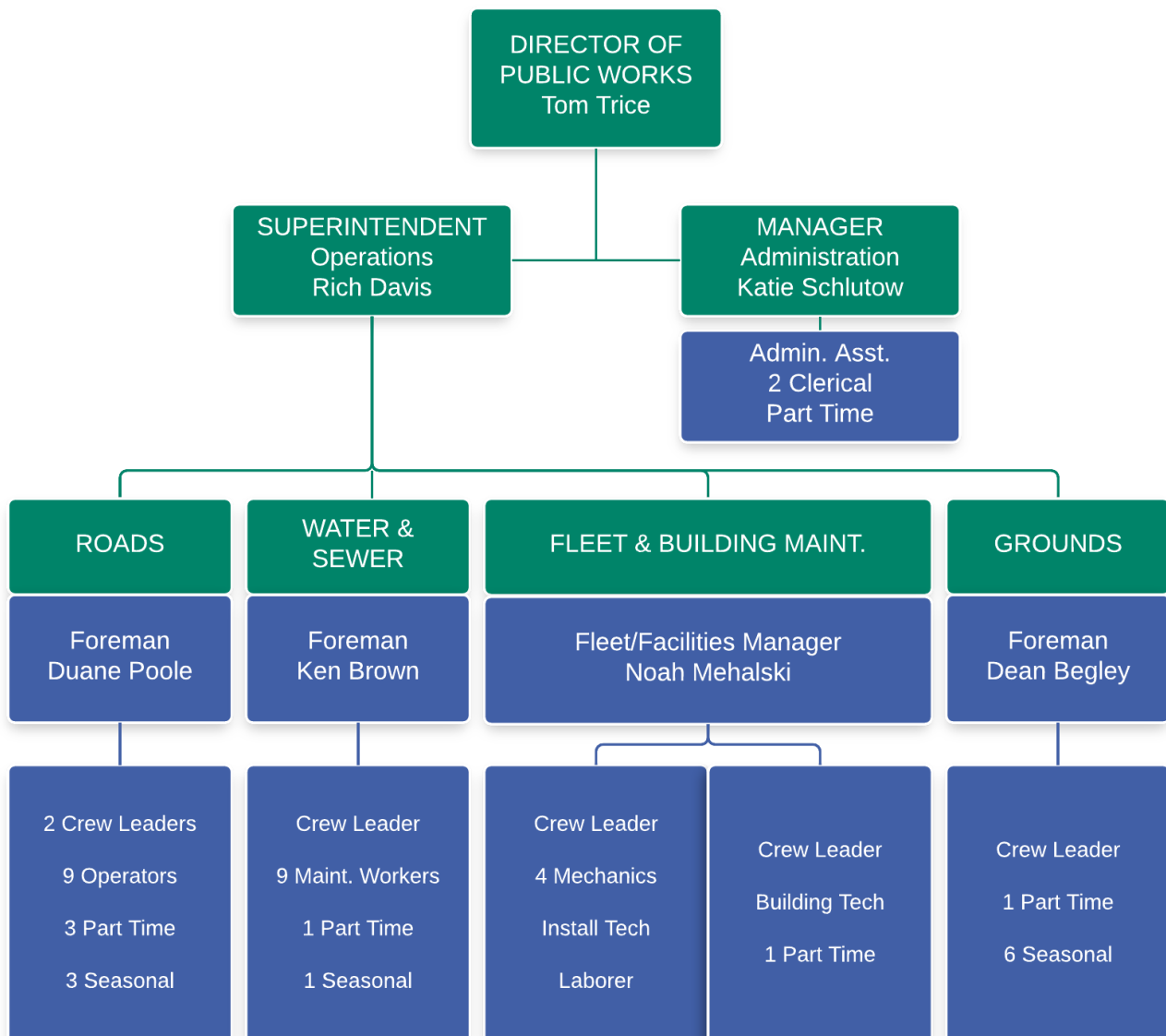
Thank you,



Thomas W. Trice
Public Works Director

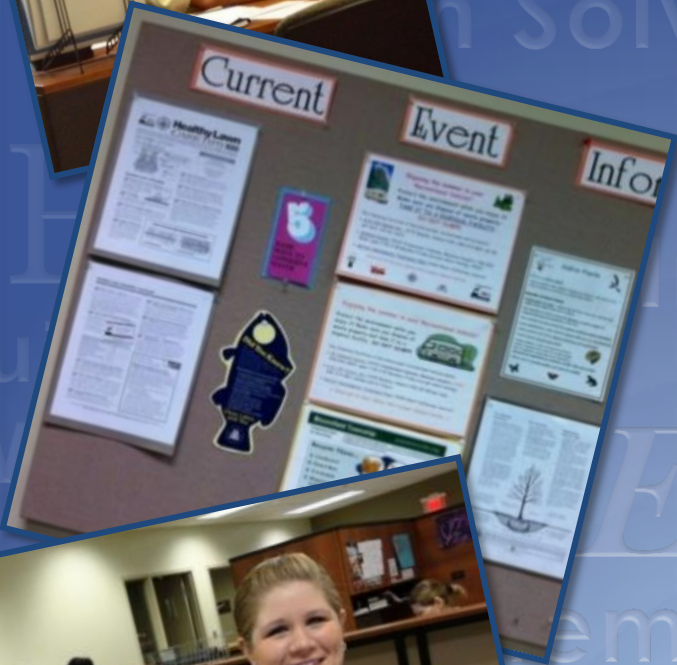
MISSION STATEMENT

The Department of Public Works Administrative and Field staff commits to bring our best to work each day with a positive professional attitude towards providing the highest level of service possible to our customers.



DEPARTMENT PERSONNEL

Division	Employee	Title	Date of Hire	Years of Service
Administration	Tom Trice	Director	09/19/2005	9
	Rich Davis	Superintendent	03/24/1987	28
	Katie Schlutow	Manager	03/28/2005	10
	Tia Kollar	Admin. Assistant	12/11/2000	14
	Kim Sasser	Customer Service	12/09/1996	18
	Kelly Lagarde	Customer Service	10/31/2005	9
Road Division	Duane Poole	Road Foreman	02/23/1999	16
	Richard Bogusky	Crew Leader	04/13/1998	16
	Marco Nervo	Crew Leader	12/18/2002	12
	Clint Harwood	Operator	04/18/1993	21
	Jason Simpson	Operator	10/21/1995	19
	Jon Grigsby	Operator	04/01/1997	17
	Sean Caverly	Operator	08/23/1997	17
	Adam Roose	Operator	06/19/2004	10
	Bruce Carnahan	Operator	11/08/2004	10
	Jeff Krauskopf	Operator	01/13/2007	8
	James Davis	Operator	06/04/2011	3
Glenn Wood II	Operator	09/26/2011	3	
Water Division	Ken Brown	Water Foreman	06/01/1987	27
	Craig Lewis	Crew Leader	11/26/2001	13
	Rick Jenkinson	Water Operator	08/09/1999	15
	Steve Sierota	Water Operator	05/18/2001	13
	Paul Palace	Water Operator	07/09/2001	13
	David Keller	Water Operator	07/21/2003	11
	Kris Schlutow	Water Operator	07/19/2004	10
	Michael Domine	Water Operator	02/25/2008	7
	Shane Beslock	Water Operator	04/29/2011	3
	Josh Eubanks	Water Operator	11/21/2011	3
	Patrick McNamara	Water Operator	10/07/2013	1
Fleet/Facilities Maintenance	Noah Mehalski	Fleet/Facilities Manager	10/15/2007	7
	Pat Quinn	Facilities Crew Leader	11/01/1999	15
	Bill Diviney	Fleet Crew Leader	01/10/2000	15
	Joseph Davis	Master Mechanic	03/24/1987	28
	Michael Rogers	Master Mechanic	08/17/1992	22
	James Finkley	Master Mechanic	07/04/1994	20
	Brett Moshier	Install/Service Tech	06/14/1999	15
	James Rowland	Maintenance Tech	02/25/2008	7
	Dave Stacherski	Master Mechanic	02/21/2012	3
	Rob Stacherski	Laborer	11/24/14	< 1
Grounds Maintenance	Dean Begley	Grounds Foreman	08/22/1998	16
	Hillary Drotoz	Crew Leader	11/25/2002	12



Service Phone Calls
 Problem Solvers Records
 Helpful Education
 Information Administration
 Customer Service
 Events Friendly
 Problem Solvers Management

ADMINISTRATION

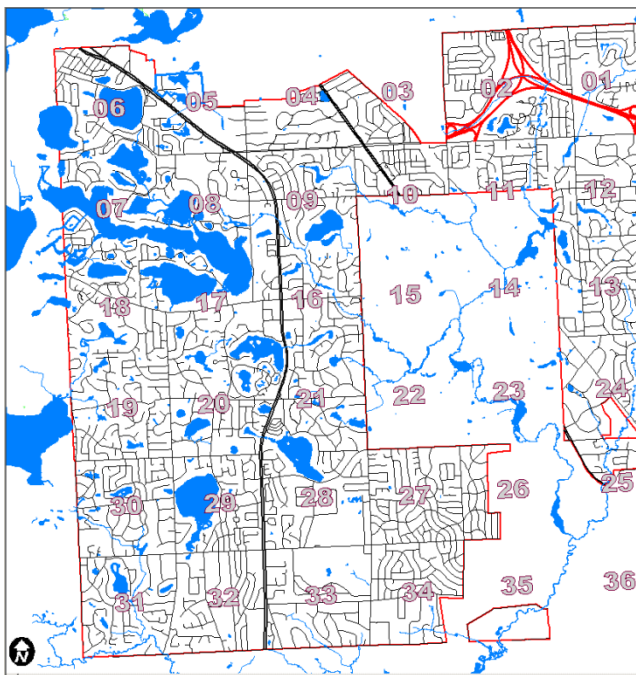
Phone Calls
 Records Help
 Customer Service
 Events Administration
 Problem Solvers
 Information Management

ADMINISTRATION

The Public Works Administration consists of an Administrative Assistant, two full-time customer service employees and one part-time customer service employee. Each employee is fully trained in every aspect of all the different Public Works Divisions so that they are able to answer questions and inform residents regarding all DPW operations.

Administration also includes management staff that is responsible for overseeing the entire department. The DPW Director is responsible for managing the Department's budget as well as developing and guiding the department's long-term direction and goals. The DPW Superintendent primarily oversees the DPW's operations. Each division's foreman and supervisors report to him directly regarding the day-to-day tasks and services. The Public Works Manager primarily oversees the DPW's administrative functions, such as contract management, billing dispute resolution and community events.

The primary function and top priority of administration is customer service. Administrative Staff answer all incoming calls for Roads, Water & Sewer, and Solid Waste. They are the first point of contact for addressing resident concerns and answering resident questions.



Service Request Log: 011556

Reports First Previous Next Last Add New Save Cancel Delete Locate Sort More Map

General Information		Extended Description		Activity Log		Service Request List View	
Type and Status		Days		Hours		Assignment	
Serv Req#	011556	0.95	22.73	Taken By	107	Sasser, Km	
Req Type	R02 Trees And Shrubs	0.95	22.73	Assignee			
Call Date	07/16/2012	Time	15:13	Dept	101	Road Division	
Completed		Time		Priority			
Scheduled		Misc		District	13	District 13	
Location		Cost (\$)					
Location Code / Name	LQ						
1303	Eastover Farms / 1303						
Location Feature Code / Name							
Caller		Find		Notes			
Last Name/First	na						
Street Num/Name	Greentree @ Dowling	Edit		City		State Zip	
Home/Work/Cel		Clear		EMail			
Description and Contact Notes							
Greentree going northbound at Dowling on the Southeast corner across the street from the stop sign there is overgrowth blocking the view of oncoming traffic.							
User Date Time Contact Note							
* [] [] [] [] []							

Record: 2 of 11,526 | 011556 | Trees And Shrubs | District 13 | Open



Deicing Dust Cont
Gravel Grading
Removal & Trimming
Roadside Litter Storm
Damage Snow Plowing
Street Sweeping
Gravel Roads Asphalt

ROADS

Deicing Dust Cont
Gravel Grading
Removal & Trimming
Roadside Litter Storm
Snow Plowing Street
Asphalt Gravel Ro

ROAD DIVISION

Bloomfield Township is the only Township in the State of Michigan to offer its residents the services of a sophisticated Road Division. By a contractual agreement with the Road Commission for Oakland County (RCOC), Bloomfield Township maintains the surface of 213 miles of subdivision roads and RCOC retains responsibility for 50 miles of primary roads and state trunk lines within Bloomfield Township.

Since it was established in the early 1970's, it has grown to become a highly respected and well equipped operation. All employees are required to maintain a commercial driver's license and are on call 24 hours a day as first responders.

The Road Division provides a wide range of services not offered by other townships. We maintain over 200 miles of subdivision roads and provide the following services:

- Snow Plowing
- Ice & Snow Control
- Winter Marker Program
- Asphalt Patching
- Gravel Road Grading
- Dust Control
- Median Maintenance on State Roads
- Roadside Litter Cleanup
- Street Sweeping
- Select Mowing
- Select Trimming
- Storm Damage
- Select Tree Removal
- Oakland County Tri-Party Paving Projects
- Oakland County 50/50 Drainage Improvements
- Oakland County 50/50 Bridge Projects

WE MAINTAIN

- **176 miles of Subdivision roads**
- **37 miles of unpaved gravel roads**



A look at the numbers...	
Miles of Patch Paving Completed	2.58
Tons of Cold Patch to fill Potholes	191
Tons of Gravel added to Gravel Rds	794
Number of Winter Storm Events	22
Total Sq Yds of Concrete Repaired & Replaced	4,114

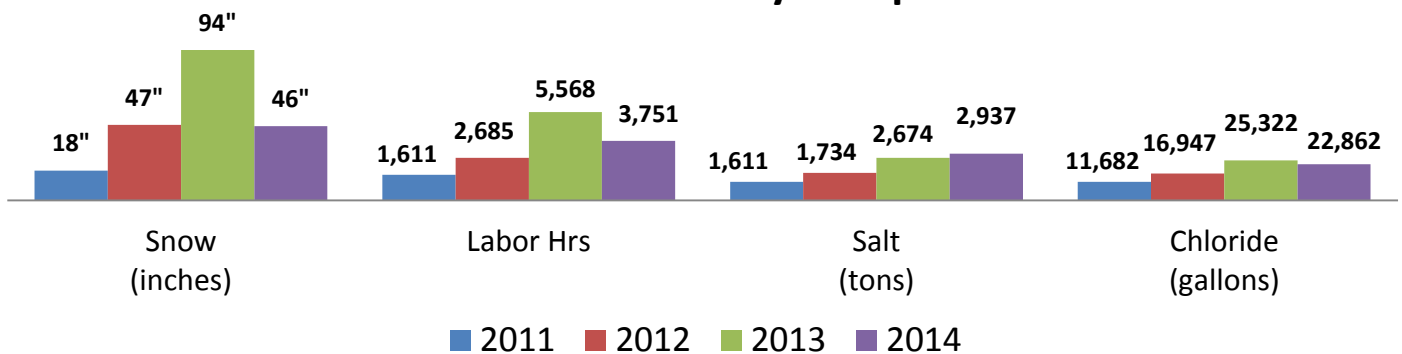
ROAD DIVISION

2014-2015 Winter Storm Season

Although the winter season may not have been as record breaking as the previous year's Polar Vortex, February 2015's average temperature was still only 14.5 degrees. That's the coldest since 1875, when the average temperature was 12.2 degrees, according to the National Weather Service. In addition to the record cold, the Road Division still had a considerable amount of storm events and freezing rain that had to be dealt with in order to keep the roads safe and passable.

The Road Division crews responded to a total of 22 winter storm events with a total snowfall of 46 inches (half the amount of the Polar Vortex!). They used approximately 3,750 labor hours, 2,900 tons of salt and 23,000 gallons of calcium chloride to clear the roads or the snow and ice.

Winter Storms - Yearly Comparisons

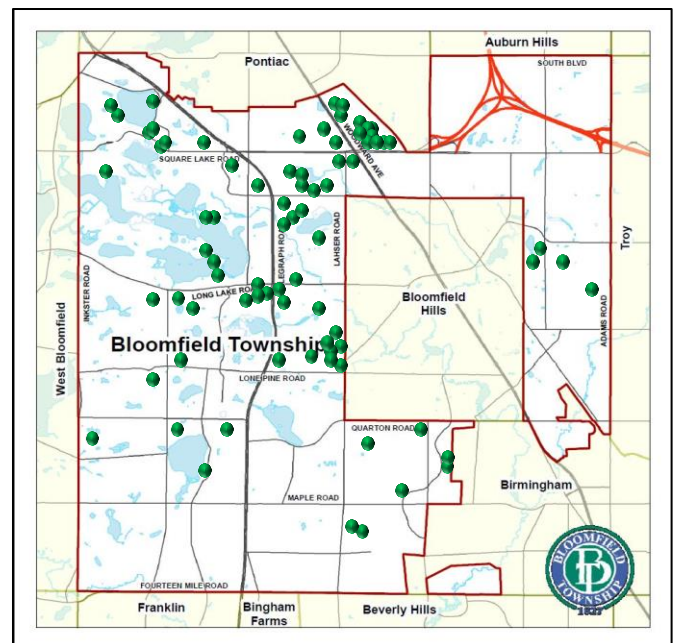


Strong Wind Storms and Record Rainfalls

The Road Division doesn't just get hit hard in the winter season, summer rain and windstorms can be just as taxing as road crews are tasked with clearing downed trees from the roadways and cleaning up damage from record rainfalls and flooding.

On July 27, 2014 there was a massive storm system that brought 60-70mph winds through the metro Detroit area. Over 200,000 homes were without power and the damage from downed trees was considerable. The Road Division responded to over 80 downed tree locations that had to be cleared from roadways, these locations are shown on the map to the right. The cleanup took a month and a half and almost 1,200 labor hours to complete.

On August 11, 2014 the metro Detroit area broke a record for the Second Heaviest Single Day Rain since record keeping began. Most areas received over 4 inches of rain and there was almost 5.5 inches recorded in our neighboring city of Troy.



ROAD DIVISION

Task	Labor Hours	Labor Cost	Eqp Cost	Mat Cost	Total Cost
Asphalt Overlay / S04	2,801	\$68,871.58	\$87,240.08	\$98,526.53	\$254,638.18
Basin&manhole Clean	78	\$2,013.39	\$474.82	\$0.00	\$2,488.21
Building&ground Maint	333	\$5,440.84	\$4,098.90	\$201.00	\$9,740.74
Clean Sweep	19	\$406.05	\$426.68	\$0.00	\$832.73
Clerical	1,840	\$41,126.00	\$1,672.08	\$0.00	\$42,798.08
Clerical / WA2	20	\$445.00	\$0.00	\$0.00	\$445.00
Ditching	283	\$6,628.29	\$9,501.28	\$1,456.63	\$17,586.20
Dream Cruise	155	\$5,266.55	\$1,630.38	\$0.00	\$6,896.93
Dust Control	122	\$3,162.69	\$6,535.60	\$6,471.90	\$16,170.19
Emer. Drain Cleanout	162	\$3,746.97	\$952.47	\$0.00	\$4,699.44
Equipment Servicing	636	\$15,159.37	\$16,187.05	\$18.48	\$31,364.90
E-Waste	62	\$2,311.26	\$103.74	\$0.00	\$2,415.00
Grade Gravel Surface	860	\$23,357.08	\$47,615.19	\$4,213.51	\$75,185.78
Guardrail-Post Maint.	37	\$857.55	\$510.12	\$648.60	\$2,016.27
HHW Day	137	\$5,151.49	\$456.68	\$0.00	\$5,608.17
Holiday	910	\$24,183.30	\$0.00	\$0.00	\$24,183.30
Hydroseeding	30	\$648.90	\$635.25	\$22.50	\$1,306.65
Install/Remove C-markers	347	\$6,820.96	\$1,547.12	\$739.20	\$9,107.28
Mailbox&misc. Repair	1,502	\$40,018.43	\$9,118.13	\$11,589.98	\$60,726.54
Misc. Maintenance	1,114	\$25,270.31	\$17,138.91	\$1,557.91	\$43,967.12
Open House	265	\$11,714.34	\$5,315.88	\$0.00	\$17,030.22
Other	419	\$10,953.80	\$0.00	\$0.00	\$10,953.80
Patch Gravel Surface	875	\$23,555.70	\$42,194.02	\$22,721.74	\$88,471.46
Personal	207	\$5,345.37	\$0.00	\$0.00	\$5,345.37
Pothole Patching	7,009	\$151,050.27	\$97,311.14	\$40,459.87	\$288,821.27
Roadside Litter	481	\$5,415.10	\$2,623.70	\$0.00	\$8,038.80
Roadside Mowing	108	\$2,173.23	\$4,781.17	\$0.00	\$6,954.40
Salting & Plowing	3,231	\$98,119.60	\$188,605.32	\$192,112.56	\$478,837.48
Salting/Plowing cul-de-sacs	2	\$34.03	\$15.40	\$0.00	\$49.43
Sanding	176	\$4,729.03	\$9,854.86	\$4,632.99	\$19,216.88
School Training	15	\$567.30	\$633.15	\$0.00	\$1,200.45
Sick	953	\$24,958.18	\$0.00	\$0.00	\$24,958.18
Sign-Maint. Install.	52	\$1,531.58	\$1,879.07	\$723.55	\$4,134.20
Sod Damage Repair	108	\$2,432.75	\$1,100.36	\$169.62	\$3,702.73
Supervision	2,509	\$90,614.55	\$0.00	\$58.33	\$90,672.88
Sweeping Curb/Gutter	918	\$27,979.21	\$55,946.24	\$0.00	\$83,925.45
Sweeping Intersection	89	\$2,363.86	\$2,597.94	\$18.48	\$4,980.28
Training Program	300	\$7,003.23	\$3,789.66	\$0.00	\$10,792.89
Training Program / WG4	10	\$356.30	\$0.00	\$0.00	\$356.30
Trees And Shrubs	3,128	\$78,039.77	\$72,774.57	\$100.58	\$150,914.92
Vacation	2,152	\$58,658.64	\$0.00	\$0.00	\$58,658.64
Work For Other Dept.	1,065	\$12,210.90	\$125.67	\$616.56	\$12,953.13
Workmans Comp.	10	\$252.10	\$0.00	\$0.00	\$252.10
Grand Totals	35,523	\$900,944.80	\$695,392.63	\$387,060.52	\$1,983,397.95



Pressure Hydrants
 Manholes Miss Dig
 Water Main Breaks
 Cleaning SCADA
 PRVs Meter Reading
 Pumping Stations
 Emergency Repairs Sewer

WATER

Pressure Hydrants
 Manholes Miss Dig
 Water Main Breaks
 Cleaning SCADA
 PRVs Meter Reading
 Pumping Stations

WATER & SEWER DIVISION

The Water & Sewer Division is responsible for distributing safe drinking water to more than 16,000 customers. Drinking water is treated, tested and monitored on a continuous basis to ensure that it meets or exceeds all federally mandated requirements governing its quality.

The Water & Sewer Division is also responsible for providing a means to collect sanitary sewage disposal from more than 11,000 homes and businesses for transportation to the City of Detroit's wastewater treatment plant. The Division maintains the sewers and operates 9 sewage-pumping stations, which have been recently upgraded to ensure continuous operation.

The Water and Sewer Division employees all maintain Drinking Water Operator Certifications and are on call 24 hours a day as first responders.

The Water & Sewer Division performs many functions in order to ensure quality services. Some of those functions include the following:

WATER SUPPLY

- Maintain positive operating pressure over approximately 280 miles of public water mains that range in diameter from 6" to 24"
- Repair and maintain pressure regulating valves (PRV's) at 12 locations throughout the Township.
- Perform emergency repairs on public water mains as necessary.
- Repair and maintain over 2,900 fire hydrants.
- Repair and maintain over 2,900 operating valves.
- Install new water service connections to property lines.
- Locate underground pipes for Miss Dig.
- Collect water samples for testing.
- Maintain a 1-million gallon storage tank and booster station.

WE MAINTAIN

- 280 miles of public water mains
- 210 miles of sanitary sewer pipes

SEWAGE COLLECTION

- Maintain over 210 miles of sewer pipes to ensure sewage can flow freely by gravity.
- Inspect and repair 6559 sanitary manholes
- Perform necessary emergency repairs of sewer pipes.
- Clean public sewers with vector truck.
- Internally inspect public sewers with video equipment.
- Maintain pumping facilities for continuous operations.

A look at the numbers...

Number of Meters replaced	201
Number of Main Breaks	44
Linear Feet of Sewer Lines cleaned	63,379
Number of Miss Dig requests	3,205
Number of Hydrants replaced	11

WATER & SEWER DIVISION

SOCWA

In July of 2011, the Township began purchasing water from Southeast Oakland County Water Authority (SOCWA) instead of directly from Detroit Water and Sewerage Department (DWSD). The large water storage capacities provided by SOCWA allow them to avoid more costly peak demand charges and provide a more stable rate. Since 2011, we have been able to avoid costs of over \$6 million for purchasing water as opposed to staying directly with DWSD. We are continuing our efforts with SOCWA to seek a permanent membership status with their organization.

Usage Rates

The water and sewer usage rates are billed per 1000 gallons based on the water volumes read on the customer's water meters. These rates consist of four components: 1) commodity charges, 2) operating expenses, 3) depreciation, and 4) capital projects.

1. **Commodity Charges** - The commodity charges are the largest component, making up 63% of the rates. These are the pass through costs from SOCWA for water and from the OCWRC for the sewage treatment. Both agencies are wholesale customers of DWSD and their costs consist largely on what DWSD charges them.
2. **Operating Expenses** - The Township DPW – Water Division is responsible for operating and maintaining the water and sewer system which includes a one million gallon storage reservoir, ten pumping facilities, over 500 miles of pipes along with the attached manholes, hydrants and valves. In addition over 15,000 water meters are read, billed and serviced. Township operating costs have been very consistent over the past several years, making up approximately 20% of the charges.
3. **Depreciation** - The average age of the water and sewer pipes within the Township's system is 50 years old with some pipes nearly 90 years old. Much of the system is nearing or is beyond half of their useful service life. Depreciation makes up approximately 8% of the rates.
4. **Capital Projects** - Since 2006, the Township has bonded for major repairs and replacements needed for both systems. This adds additional cost to the customer to pay the debt for the bond. Depreciation alone is not a sufficient amount needed to continue the current and future capital projects. Including a component in the rate for capital projects will help the Township build the necessary reserve without selling bonds. New in 2015, a component in the rates of about 9% will be included to build up the reserve funds for current and future capital projects.

Water & Sewer Rates	
<i>Effective April 1, 2015</i>	
Water (per 1,000 gal)	\$ 5.20
Sewer (per 1,000 gal)	\$ 6.84
Water Debt (flat fee - per quarter)	\$ 14.00
Sewer Debt (flat fee - per quarter)	\$ 9.00
Ready to Serve - Water (flat fee - per quarter)	\$ 34.00
Ready to Serve - Sewer (flat fee - per quarter)	\$ 38.00
Sewer Only (per quarter)	\$ 252.20

WATER & SEWER DIVISION

Other Charges

In addition to the usage rate components, there are flat charges, billed per customer, per quarter. These are the Ready To Serve (RTS) and Debt Charges.

Ready To Serve: In 2009, DWSD began applying a monthly flat rate to their water and sewer charges regardless of what water volumes were used. DWSD had determined that 90% of their overall costs do not vary with the water usage. This is known as the “Ready To Serve” (RTS) charge which is widely used in the utility industry for charging customers for the stationary cost of being connected to the system. This helps to cover some of the costs of the Township’s operating expenses that do not vary with water usage. This includes services such as service appointments, utility staking, meter replacements, engineering, system repairs (water main breaks) and after hour emergency calls. It is a fair way to spread the costs to provide service to all of our customers in an equitable manner.

Debt Charges: Debt charges have been in place by Township Ordinances for over 50 years and it is a mechanism for the Township to collect sufficient revenue to cover the bond debt for the water and sewer system.

Meter Replacement Program

For the past several years the Water and Sewer Division has been systematically replacing old meters throughout the entire Township. The newer meters help to alleviate inaccurate meter readings that attribute to the Township’s total water loss and also improves efficiency by streamlining and speeding up the meter reading process. So far over 90% of Townships meters have been upgraded to newer more efficient meters.



Capital Improvement Projects

Throughout the year, the Engineering and Environmental Services Department is tasked with replacing and upgrading the Township’s water and sewer line infrastructure. These projects could not be done without the assistance of the Water and Sewer Division crews. The staff helps with the locating of valves, shut-offs, manholes and hydrants for the contractors and also helps and assists with overseeing the inspections of the work completed.



WATER & SEWER DIVISION

Task	Labor Hours	Labor Cost	Eqp Cost	Mat Cost	Total Cost
Call Duty	452	\$23,505.47	\$353.52	\$380.00	\$24,238.99
Clerical / WA2	4,721	\$86,737.82	\$0.00	\$0.00	\$86,737.82
Gate Well Maint.	393	\$9,905.92	\$4,404.16	\$2,555.28	\$16,865.35
Holiday / WL06	910	\$23,305.50	\$0.00	\$0.00	\$23,305.50
Hydrant Maint.	959	\$24,277.63	\$5,926.30	\$22,311.74	\$52,515.67
Lawn Restoration	45	\$1,039.00	\$687.60	\$0.00	\$1,726.60
Manhole Inspect	1,323	\$30,830.34	\$5,975.02	\$0.00	\$36,805.36
Manhole Maint.	126	\$3,081.69	\$680.36	\$388.50	\$4,150.55
Manhole Repair	119	\$2,898.50	\$1,347.66	\$0.00	\$4,246.16
Meter Installed	907	\$25,153.92	\$5,461.38	\$27,546.06	\$58,161.35
Meter Miscellaneous	760	\$20,143.06	\$5,124.53	\$8,456.90	\$33,724.49
Meter Reading	412	\$8,422.32	\$3,739.04	\$0.00	\$12,161.36
Meter Replaced	1,450	\$40,528.04	\$8,347.20	\$45,929.44	\$94,804.68
Miscellaneous	3,531	\$93,601.79	\$14,920.29	\$4,839.57	\$113,361.65
Miss Dig Staking	2,207	\$55,252.36	\$17,637.76	\$1,368.90	\$74,259.02
Other	232	\$6,103.39	\$0.00	\$0.00	\$6,103.39
Other / WL05	214	\$5,363.05	\$0.00	\$0.00	\$5,363.05
Personal / WL02	217	\$5,643.64	\$0.00	\$0.00	\$5,643.64
Prv Maint.	841	\$23,785.30	\$7,569.32	\$0.00	\$31,354.62
Pump Maint.	746	\$21,785.08	\$6,750.32	\$0.00	\$28,535.40
Service Calls	513	\$22,308.13	\$4,744.60	\$961.82	\$28,014.55
Sewer Cleaning	1,288	\$31,576.79	\$37,397.52	\$3,125.00	\$72,099.31
Sick / WL03	1,029	\$26,750.45	\$46.60	\$0.00	\$26,797.05
Stop Box Maint.	682	\$16,493.09	\$12,188.24	\$939.80	\$29,621.13
Supervision / WA1	1,928	\$68,828.11	\$613.36	\$0.00	\$69,441.47
Training Program / WG4	602	\$15,199.54	\$0.00	\$0.00	\$15,199.54
Vacation	1	\$20.64	\$0.00	\$0.00	\$20.64
Vacation / WL01	1,990	\$53,049.20	\$0.00	\$0.00	\$53,049.20
Video Sewers	302	\$7,407.21	\$11,271.66	\$0.00	\$18,678.87
Water Main Breaks	546	\$19,254.57	\$6,344.63	\$8,417.03	\$34,016.23
Grand Totals	29,437	\$772,251.50	\$161,531.07	\$127,220.04	\$1,061,002.61



mechanics Contractors
Repairs Grounds
Preventative Maintenance
Landscaping HVAC
Oil Change Tires
Building Maintenance
Repairs Mowing

MAINTENANCE

Repairs Grounds
Preventative Maintenance
Landscaping HVAC
Oil Change Tires
Building Maintenance
Repairs Mowing

FLEET MAINTENANCE

There are eight employees in the Fleet Maintenance Division (Motor Pool), including the Fleet Manager, Crew Leader, Installation Tech, four State Certified mechanics and one Laborer. The Motor Pool is responsible for the maintenance and emergency work on over 167 fleet vehicles and 55 pieces of equipment.



The Fleet Manager and Crew Leader work together to oversee the management and daily operations of the Division. One mechanic is dedicated to the maintenance and repair of light vehicles.

This includes vehicles such as all of the police vehicles, building inspection vehicles, administrative vehicles and also small equipment like lawn mowers, chainsaws, pumps and generators used by the Roads, Water and Grounds Divisions.

Three mechanics are dedicated to the maintenance and repair of all large equipment and vehicles including Fire Department Engines, Paramedic Rescues and Snow Removal Equipment.

All mechanics, including the Crew Leader are State Certified, are crossed trained and able to work on any Township equipment. The mechanics are also trained in welding and fabricating for all facets of maintenance and repair.

The installation tech is responsible for upfitting and maintaining all aftermarket emergency equipment installed on Township emergency vehicles such as police patrol vehicles. Many components, including radios, emergency lighting, sirens, Mobile Data Computers (MDC), in-car video systems, mounted radar and prisoner partitions are all a part of the upfitting process.

Motor Pool employees are first responders and on call 24 hours a day.



FLEET MAINTENANCE

Purchase of New Equipment

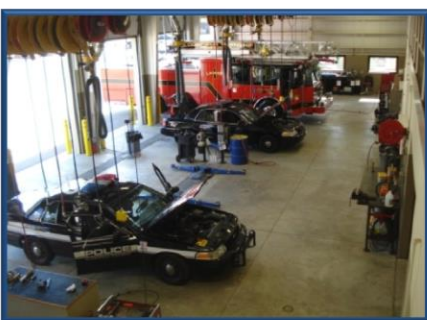
The Motor Pool Division facilitated the replacement of one single axle chipper truck, a closed circuit sewer televising truck, an additional ladder truck for the Fire Department, and two new Chevrolet Caprice's that were built for the Police Department to assess their capabilities. The chipper truck replaced one that was over 24 years old and was beginning to have serviceability issues. The sewer televising truck replaced one that was fabricated in house about 15 years ago. The resulting technology upgrades to the truck have made it more functional and will allow Water Division employees to address their work more effectively and efficiently. The additional Ladder Truck will better equip our Fire Department to respond to emergencies. The two Caprice's allowed our PD to assess the usefulness of this new offering to our Patrol Divisions. They were fully up fitted with Police Equipment and placed into service through the winter season to assess them.

Preventative Shop Maintenance

The Motor Pool Division facilities were constructed in 2009 and included some very specialized and costly machinery that is integral to maintaining the Township's Fleet of over 250 pieces of equipment. This equipment includes lifts and hoists, cranes and the oil delivery system to name a few. The Motor Pool Division along with the Building Maintenance Division, have established ongoing maintenance contracts for these vital pieces of equipment. These contracts require frequent inspections and prompt repair of any deficiencies noted. This has provided us the assurance that the vital equipment, which allows us to perform our functions, is available to us when required.

Training

Training is an integral part of maintaining our high level of service and expertise in the face of ever advancing technology in vehicles and equipment. Throughout the 2014-2015 fiscal year, Motor Pool staff received training in several disciplines as explained below. Compu-spread 550 training and the Issues for Today's Mechanics and Fleet Managers Seminar. Training also includes participation and coordination of the Southeast Michigan Municipal Fleet Managers Association. This group which is coordinated by the Motor Pool Division brings together over twenty fleet managers from all over Metro Detroit once a month to share ideas and learn about new products. This training allows our mechanics to stay ahead of the vehicle technology curve and stay up to date with new vehicle advances. This allows us to perform more services in house and decreases costs by gaining efficiency in our work.



FLEET MAINTENANCE

System Component / Task	Labor Hours	O/T Hrs	Labor Cost	Part Cost	Total Cost
- MINOR-LUBE	174.10	0.00	\$ 5,223.00	\$ 1,485.81	\$ 6,708.81
- FUEL	12.50	0.00	\$ 375.00	\$ 2,191.26	\$ 2,566.26
- ANNUAL INSPECTION	0.00	0.00	\$ -	\$ -	\$ -
- PREV. MAINT.	1,663.60	0.00	\$49,908.00	\$37,414.00	\$87,322.00
- PREV. MAINT.	147.80	0.00	\$ 4,434.00	\$ 3,747.40	\$ 8,181.40
- PREV. MAINT.	22.10	0.00	\$ 663.00	\$ 1,299.57	\$ 1,962.57
- PREV. MAINT.	20.20	0.00	\$ 606.00	\$ 609.83	\$ 1,215.83
- PREV. MAINT.	181.10	0.00	\$ 5,433.00	\$ 775.90	\$ 6,208.90
- TIRES,AUTO	171.10	0.00	\$ 5,173.00	\$32,837.64	\$38,010.64
- TIRES,TRUCKS	32.70	0.00	\$ 981.00	\$ 4,798.14	\$ 5,779.14
- TIRES,OFF ROAD	10.60	0.00	\$ 318.00	\$20,926.27	\$21,244.27
- TPMS	14.10	0.00	\$ 423.00	\$ 382.68	\$ 805.68
- A/C,HEAT,VENT	132.20	0.00	\$ 3,966.00	\$ 4,698.31	\$ 8,664.31
- BODY SHEEY MET.	30.30	0.00	\$ 909.00	\$ 580.22	\$ 1,489.22
- CAB	125.80	0.00	\$49,574.40	\$43,899.72	\$93,474.12
- DUMP BOX	26.90	0.00	\$ 807.00	\$ 236.86	\$ 1,043.86
- STRIPING	34.80	0.00	\$ 1,549.00	\$ 484.37	\$ 2,033.37
- AXLE,FRT.NON DR	0.40	0.00	\$ 12.00	\$ 222.56	\$ 234.56
- AXLE,REAR	16.60	0.00	\$ 498.00	\$ 326.28	\$ 824.28
- BRAKES	418.10	0.00	\$12,543.00	\$24,717.81	\$37,260.81
- FRAME	7.20	0.00	\$ 216.00	\$ -	\$ 216.00
- STEERING	87.00	0.00	\$ 3,462.10	\$ 4,459.20	\$ 7,921.30
- SUSPENSION	63.00	0.00	\$10,117.25	\$15,876.02	\$25,993.27
- WHLS,HUBS,BRGS.	13.20	0.00	\$ 723.95	\$ 2,057.01	\$ 2,780.96
- BUMPERS,P.BUMP.	8.50	0.00	\$ 255.00	\$ 268.10	\$ 523.10
- AXLE DRVN.F.STR	1.70	0.00	\$ 51.00	\$ 8.34	\$ 59.34
- CLUTCH	5.60	0.00	\$ 168.00	\$ -	\$ 168.00
- DRIVE SHAFT(S)	15.80	0.00	\$ 474.00	\$ 833.11	\$ 1,307.11
- TRANS.AUTOMATIC	43.00	0.00	\$ 6,925.50	\$ 7,072.77	\$13,998.27
- CHARGING SYS.	51.00	0.00	\$ 1,530.00	\$ 3,050.57	\$ 4,580.57
- CRANKING SYS.	76.60	0.00	\$ 2,298.00	\$ 6,953.21	\$ 9,251.21
- IGNITION SYS.	0.70	0.00	\$ 21.00	\$ 25.61	\$ 46.61
- LIGHTING SYS.	290.40	0.00	\$11,526.21	\$ 5,446.89	\$16,973.10
- MISC.	99.00	0.00	\$ 3,009.00	\$ 7,181.54	\$10,190.54
- AIR BAG SYSTEM	1.20	0.00	\$ 36.00	\$ -	\$ 36.00
- BATTERY REPLACEMENT	27.70	0.00	\$ 831.00	\$ 5,695.49	\$ 6,526.49
- COMP U SPREAD	18.80	0.00	\$ 564.00	\$ 357.31	\$ 921.31
- EMERGENCY LIGHTING	161.10	0.00	\$ 6,733.00	\$ 6,864.63	\$13,597.63
- AIR INTAKE SYS.	6.00	0.00	\$ 180.00	\$ 97.08	\$ 277.08
- COOLING SYS.	206.60	0.00	\$ 6,198.00	\$13,699.32	\$19,897.32
- EXHAUST SYS.	64.30	0.00	\$ 2,045.40	\$ 3,250.31	\$ 5,295.71
- FUEL SYS.	89.80	0.00	\$ 3,150.00	\$22,020.97	\$25,170.97
- COMP.CNTRL.SYS.	52.10	0.00	\$ 8,237.37	\$ 4,202.90	\$12,440.27

FLEET MAINTENANCE

System Component / Task	Labor Hours	O/T Hrs	Labor Cost	Part Cost	Total Cost
- TUNE UPS	0.00	0.00	\$ 2,224.14	\$ 488.49	\$ 2,712.63
- ENGINE OVERHAUL	3.40	0.00	\$ 102.00	\$ -	\$ 102.00
- BELTS	8.40	0.00	\$ 252.00	\$ 608.18	\$ 860.18
- OIL COOLER LINES	16.40	0.00	\$ 492.00	\$ 736.36	\$ 1,228.36
- GASKETS & SEALS	41.90	0.00	\$ 2,727.50	\$ 351.03	\$ 3,078.53
- GEN. ACCESS.	535.40	0.00	\$ 16,477.00	\$ 23,529.70	\$ 40,006.70
- TOW CHAINS,CBL.	0.00	0.00	\$ 40.00	\$ -	\$ 40.00
- FABRIC. WELDING	164.80	0.00	\$ 4,944.00	\$ 1,713.39	\$ 6,657.39
- FIRE TRKS. PUMP	85.30	0.00	\$ 2,559.00	\$ 3,168.22	\$ 5,727.22
- UNDER BDY.SCRP.	87.60	0.00	\$ 2,628.00	\$ 4,736.00	\$ 7,364.00
- SALT SPREADERS	205.10	0.00	\$ 6,153.00	\$ 3,920.91	\$ 10,073.91
- FRONT PLOW	90.10	0.00	\$ 2,703.00	\$ 7,986.15	\$ 10,689.15
- VEH.COUP. SYS.	0.00	0.00	\$ -	\$ -	\$ -
- COMPUTER SYSTEM	335.40	0.00	\$ 10,062.00	\$ 2,293.80	\$ 12,355.80
- SIREN	6.50	0.00	\$ 195.00	\$ -	\$ 195.00
- EMERGENCY RADIO SYSTEM	127.50	0.00	\$ 4,091.25	\$ 588.96	\$ 4,680.21
- VIDEO SYSTEM	291.20	0.00	\$ 8,736.00	\$ 167.88	\$ 8,903.88
- RADAR SYSTEM	18.50	0.00	\$ 555.00	\$ 94.50	\$ 649.50
- AFTER MARKET BUILD	279.30	0.00	\$ 19,119.00	\$ 66,895.29	\$ 86,014.29
- AFTER MARKET TEAR DOWN	85.50	0.00	\$ 2,965.00	\$ 164.00	\$ 3,129.00
- REMOVE/REINSTALL FOR VENDOR	88.40	0.00	\$ 2,652.00	\$ 665.93	\$ 3,317.93
- CONTROL VALVES	16.80	0.00	\$ 504.00	\$ 422.37	\$ 926.37
- HOSES,CUPL.CYL.	85.00	0.00	\$ 2,550.00	\$ 1,236.67	\$ 3,786.67
- TANK,VLVS.-HYD.	22.50	0.00	\$ 675.00	\$ 1,126.68	\$ 1,801.68
- MISC.	303.60	0.00	\$ 9,108.00	\$ 6,346.49	\$ 15,454.49
- SUPERVISION	1,814.00	0.00	\$ 54,420.00	\$ -	\$ 54,420.00
- CLERICAL	990.30	0.00	\$ 29,709.00	\$ -	\$ 29,709.00
- INSPECTION	2.00	0.00	\$ 60.00	\$ -	\$ 60.00
- ROAD TEST	364.30	0.00	\$ 10,929.00	\$ -	\$ 10,929.00
- VACATIONS	1,271.20	0.00	\$ 38,136.00	\$ -	\$ 38,136.00
- SICK LEAVE	537.90	0.00	\$ 16,137.00	\$ -	\$ 16,137.00
- PERSONAL LEAVE	101.40	0.00	\$ 3,042.00	\$ -	\$ 3,042.00
- TRAINING	266.20	0.00	\$ 7,986.00	\$ -	\$ 7,986.00
- PARTS PICKUP	335.90	0.00	\$ 10,077.00	\$ -	\$ 10,077.00
- PARTS HANDLING	373.02	0.00	\$ 11,190.60	\$ -	\$ 11,190.60
- MOVING VEHICLES	612.00	0.00	\$ 18,360.00	\$ -	\$ 18,360.00
- CLEANING	282.30	0.00	\$ 8,469.00	\$ -	\$ 8,469.00
- BUILDING,GROUND	13.50	0.00	\$ 405.00	\$ -	\$ 405.00
- WASHING VEH.	51.70	0.00	\$ 1,551.00	\$ -	\$ 1,551.00
- MISC.	13.50	0.00	\$ 405.00	\$ -	\$ 405.00
- SHOP EQUIP.	109.00	0.00	\$ 3,270.00	\$ -	\$ 3,270.00
- SNOW REMOVAL	61.50	0.00	\$ 1,845.00	\$ -	\$ 1,845.00
- OPERATIONS	584.40	5.00	\$ 17,757.00	\$ -	\$ 17,757.00
Grand Totals	15,308.02	5.00	\$548,409.67	\$418,296.01	\$966,705.68

BUILDING MAINTENANCE

The Building Maintenance Division employs two full time technicians and one part time employee. The technicians have substantial knowledge and experience in all aspects of municipal building maintenance and are responsible for maintaining 12 Township buildings and also their exterior structures such as parking lot lights and signage. They also oversee and manage multiple service contracts, including the custodial contract for all the buildings. They are first responders and on call 24 hours a day.



The Building Maintenance staff's major responsibility and focus is in preventative maintenance. Routine inspections and maintenance help to keep the buildings running at optimum levels and helps to prevent system breakdowns. They are also responsible for technical repairs, construction and alteration of all Township buildings, maintenance and repair of HVAC units, electrical, plumbing and carpentry work. In addition to all their building maintenance responsibilities there are also many miscellaneous tasks frequently required of them such as set ups and break downs for special meetings and events, recycling collection and bio-hazard clean ups.



Asset Management Planning

The Building Maintenance Division of the Public Works Department performs preventive maintenance activities to prolong the life of the various mechanical systems and to maintain / improve the condition of the facilities in general. An asset management plan was developed to guide maintenance activities into the next 20 years. This plan will serve as the Building Maintenance Divisions primary tool to plan for a carry out future maintenance activities.

Roofing Maintenance Program

The Township has 11 major facilities including 31 distinct sections of roofing ranging from 1-20 years old. In addition, the construction of each roof varies depending on the intended use of the structure and the year of installation. The Township contracts with a local roofing firm to perform twice yearly inspections, preventative maintenance and repairs for these roofs. This is important because of the assets protected by these roofs and the fact that Building Maintenance staff does not have the resources or expertise to perform these preventative maintenance and repair activities on their own. This program has resulted in the repair of countless holes in the roofs as well as flashing and leak issues.

BUILDING MAINTENANCE

Installation of Variable Frequency Drive Pumps

To gain efficiency and reliability, the Building Maintenance Division replaced the two main conventional boiler pumps that were serving Township Hall with Variable Frequency Drive (VFD) units. The old pumps operated continuously 24/7/365 regardless of the call for heat within the facility. The new pumps now not only shut down when heating is not required, they also communicate with the boilers to modulate the amount of flow depending on the level of heating or cooling required. This means a savings in electricity to run the pumps but also, should increase the life expectancy of the pumps as they are not running at 100% capacity all the time.

Rebuild of Township Hall Air Handlers

The last two large air handlers serving large portions of Township Hall were rebuilt to add VFD motors and replace outdated controls and dampers. This will increase the unit's energy efficiency and will prolong the life of the motors. In addition, the dampers and controls were upgraded and rebuilt to ensure improved and proper operation of these critical units for years to come. With the completion of this work, all air handlers in Township have been modernized in this way.



Other Bldg. Maint. Division Accomplishments

- Replacement of window seals in 48th District Court
- Lightning protection phase 2
- Parking lot joint sealing
- Township Hall kitchen counter replacement
- Upgrade of Fire Station #4 HVAC controls

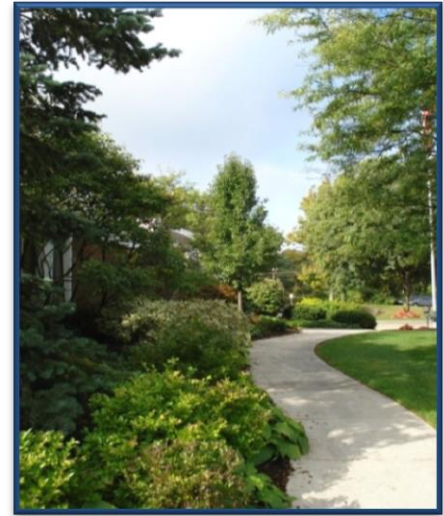
BUILDING MAINTENANCE

Component / Task	Labor Hours	Labor Cost
- SINKS	66.50	\$ 1,425.15
- TOILETS	75.00	\$ 1,437.38
- SHOWERS	3.00	\$ 44.02
- FLOOR DRAINS	9.00	\$ 163.10
- BACKFLOW PREV.	11.50	\$ 290.66
- POWER WASHERS	25.00	\$ 532.52
- FIRE SUPPRESSION	10.00	\$ 279.52
- PUMPS	22.00	\$ 505.08
- DRINKING FOUNTAINS	10.00	\$ 190.62
- HOT WATER TANKS	5.00	\$ 112.51
- CHLORIDE TANK	2.00	\$ 52.97
- PIPING	92.50	\$ 1,991.99
- PARKING LOT LIGHTS	36.75	\$ 664.34
- INTERIOR LIGHTS	384.75	\$ 6,835.64
- EMERGENCY LIGHTS	13.00	\$ 242.00
- GENERATORS	30.50	\$ 347.65
- SWITCHES/OUTLETS	31.00	\$ 616.19
- CONDUIT/WIRING	31.00	\$ 775.52
- EXTERIOR LIGHTS	102.00	\$ 1,870.20
- APPLIANCES	78.00	\$ 1,684.32
- BOILER	44.50	\$ 1,179.94
- HVAC	357.75	\$ 7,287.07
- VAV BOXES	8.00	\$ 174.55
- CHILLER	8.50	\$ 234.65
- UNIT HEATER	18.00	\$ 468.55
- SPLIT SYSTEM	10.50	\$ 289.09
- EXHAUST FAN	65.00	\$ 1,483.75
- HV UNIT	0.50	\$ 12.51
- RADIANT TUBE HEATER	2.00	\$ 55.90
- AIR HANDLER	22.50	\$ 595.36
- MISC. DISPENSORS	5.50	\$ 106.57
- DOORS/LOCKS	101.00	\$ 2,119.87
- WINDOWS	18.50	\$ 372.25
- ROOF	28.75	\$ 414.63
- CEILING	27.50	\$ 527.66

Component / Task	Labor Hours	Labor Cost
- WALLS - EXTERIOR	19.50	\$ 297.13
- WALLS - INTERIOR	123.50	\$ 1,904.13
- FLOORS	40.50	\$ 637.24
- CRANES	5.50	\$ 114.33
- EXTERIOR STRUCTURES	182.00	\$ 3,031.47
- COMPRESSORS	55.00	\$ 1,370.03
- POOL	6.00	\$ 167.71
- PARTS RUN	349.00	\$ 5,431.91
- INVENTORY HANDLING	51.00	\$ 620.69
- RECYCLE BINS	229.50	\$ 2,576.69
- TRASH BINS	116.00	\$ 1,237.81
- AUDITORIUM SETUP	135.00	\$ 2,047.56
- BOXES	31.50	\$ 564.56
- MOVE/ASSEM FURNITURE	129.00	\$ 2,128.31
- VENDING MACHINES	37.00	\$ 391.54
- RESTOCK MISC. SUPPLIES	81.00	\$ 1,251.86
- RESTOCK COPY PAPER	85.00	\$ 910.03
- RESTOCK WATER BOTTLES	32.00	\$ 424.40
- CARPENTRY WORK	29.50	\$ 722.57
- BATTERIES	7.50	\$ 71.25
- JANITORIAL	12.50	\$ 182.83
- MAIL RUN	78.50	\$ 1,266.90
- SHOP EQUIPMENT	11.50	\$ 267.98
- CLEANING SHOP/EQUIP	100.50	\$ 1,084.96
- WORK FOR OTHER DEPT.	21.50	\$ 505.26
- KEYS	5.00	\$ 81.47
- OFFICE EQUIPMENT	15.00	\$ 329.74
- MEEETINGS	135.50	\$ 2,777.66
- CONTRACT/VENDOR MGMT	750.50	\$ 20,404.73
- CLERICAL	685.00	\$ 18,835.17
- VACATION	461.50	\$ 11,438.88
- SICK	100.00	\$ 1,539.76
- PERSONAL	15.00	\$ 293.90
- FLOATING HOLIDAY	13.50	\$ 377.33
- TRAINING	115.50	\$ 2,110.49
TOTALS	6,023.00	\$122,782.01

GROUNDS MAINTENANCE

The Grounds Maintenance Division employs two full time employees, one who is a certified arborist and both who are fully trained and certified in many aspects of landscaping, irrigation and plant and tree maintenance. Both employees also have pesticide applicator's licenses and CDLs. They are responsible for the grounds maintenance on Township owned and leased buildings on the main campus. They are also responsible for administering the state highway landscape maintenance contract and the safety path and outlot mowing contracts.



Township Campus Maintenance

More than 4 acres of lawn is maintained on the Township Campus through mowing, trimming, weed control and fertilization. Also an additional 2+ acres of tree and bed maintenance is performed which includes weeding, trimming, mulching, design and installation of new beds and flower planting. Annually they plant over 120 flats of flowers each spring and apply 130 – 260 yards of mulch per season. They also maintain 12 irrigation systems on campus used to water all of the lawns and beds.

Winter Maintenance

During the winter season the Grounds Division is on call 24 hours a day and responsible for all snow removal in the main Township campus area which includes over 4 acres of parking lots and over 3000 linear feet of pedestrian walkways and stairs. One employee is utilized by the Road Division and assigned to a dedicated plow route for the entire winter. The Grounds Division further assists the Road Division with a fleet of pickup trucks they use to help plow and clear the cul-de-sacs.



GROUNDS MAINTENANCE

State Highway Landscape Maintenance

The Grounds Division contracts out the landscape maintenance of our State highways and is reimbursed, in part, through an agreement with MDOT. The contract includes all lawn maintenance and bed/tree maintenance of the center islands and shoulders of Telegraph, Square Lake and Woodward.

State highway maintenance also includes the Grounds Division designing and overseeing the planting of many trees each year.

Also, they bid out and oversee the lawn spraying & fertilization contract and the Austrian Pine tree spraying contract.

Currently all of the maintenance of the eight irrigation systems and lighting is retained in-house.



Safety Path Maintenance

Maintenance of over 70 miles of safety paths, which includes the mowing, edging and string trimming, is contracted and overseen by the Grounds Division. In-house, they are still responsible for emergency tree removal, fence/wall repair and tree and brush trimming which is a full time job during the growing season.



Outlot Maintenance

The Grounds Division negotiated and implemented a contract for the lawn maintenance at the Township owned outlots, which includes sewer pumping stations, fire stations, retention basins, PRV locations, the water storage facility and the Westbourne booster station. They also oversee the contract for the spraying and fertilizing of these outlots as well.

GROUNDS MAINTENANCE

Task	Labor Hours	Labor Cost	Eqp Cost	Mat Cost	Total Cost
Apply Lawn Fertilizer	22	\$554.62	\$205.04	\$0.00	\$759.66
Apply Weed and Pest Control	45	\$1,134.45	\$496.12	\$0.00	\$1,630.57
Clear and Salt Sidewalks	385	\$5,059.22	\$2,970.62	\$2,339.05	\$10,368.89
Daily Debris and Litter	379	\$4,540.42	\$2,111.84	\$0.00	\$6,652.26
Emergency Tree Removal -Safety Path and Outlot	363	\$5,466.92	\$2,044.88	\$10.95	\$7,522.75
Equipment and Shop Mait.	919	\$13,825.66	\$55.92	\$0.00	\$13,881.58
Equipment Service G	183	\$3,340.40	\$186.43	\$0.00	\$3,526.83
Fall Maintenance	438	\$6,910.35	\$2,275.98	\$0.00	\$9,186.33
Fence -Safety Path and Outlot	109	\$1,328.41	\$424.06	\$585.83	\$2,338.30
General Path Cleanup	388	\$6,016.70	\$3,571.66	\$0.00	\$9,588.36
Holiday/GL6	161	\$4,552.10	\$0.00	\$0.00	\$4,552.10
Install Trees and Flowers	131	\$1,937.62	\$688.30	\$219.00	\$2,844.92
Irrigation Install	14	\$381.29	\$0.00	\$0.00	\$381.29
Irrigation Repair and Mait.	283	\$6,187.79	\$2,089.96	\$167.35	\$8,445.09
Mailbox&misc. Repair	75	\$1,915.02	\$46.20	\$0.00	\$1,961.22
Miscellaneous G	341	\$6,445.66	\$776.74	\$125.36	\$7,347.76
Mow and Trim Lawns	1,029	\$13,380.69	\$4,005.92	\$0.00	\$17,386.61
Other/GL5	22	\$679.36	\$0.00	\$0.00	\$679.36
Parts Pick-Up	150	\$2,561.23	\$939.92	\$0.00	\$3,501.15
Personal GL2	23	\$669.29	\$0.00	\$0.00	\$669.29
Plow and Salt Parking Lots	299	\$7,963.72	\$5,539.33	\$3,564.43	\$17,067.48
Roadside Litter	64	\$736.00	\$353.44	\$0.00	\$1,089.44
Salting & Plowing	70	\$1,733.06	\$1,078.00	\$0.00	\$2,811.06
Salting/Plowing cul-de-sacs	102	\$2,090.64	\$1,715.94	\$0.00	\$3,806.58
Sick GL3	29	\$878.51	\$0.00	\$0.00	\$878.51
Special Trash Pickup	9	\$277.92	\$36.96	\$0.00	\$314.88
Supervision GA1	1,328	\$40,993.20	\$5,800.20	\$3.40	\$46,796.80
Tree & Bush Trimming - Safety Path and Outlot	750	\$7,928.13	\$3,663.18	\$0.00	\$11,591.31
Tree and Shrub Maitenance	2,246	\$31,314.71	\$13,148.10	\$4,324.92	\$48,787.72
Vacation	20	\$504.20	\$0.00	\$0.00	\$504.20
Vacation GL1	348	\$9,902.98	\$0.00	\$116.48	\$10,019.46
Work for Other Dept	5	\$154.40	\$46.20	\$0.00	\$200.60
Grand Totals	10,727	\$191,364.64	\$54,270.94	\$11,456.76	\$257,092.34

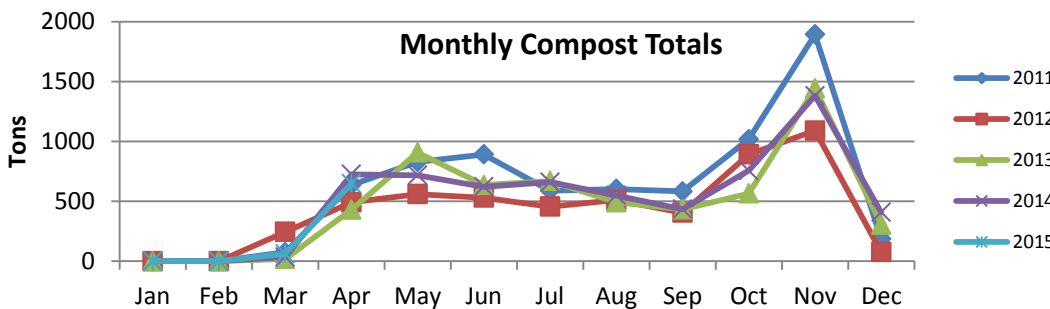
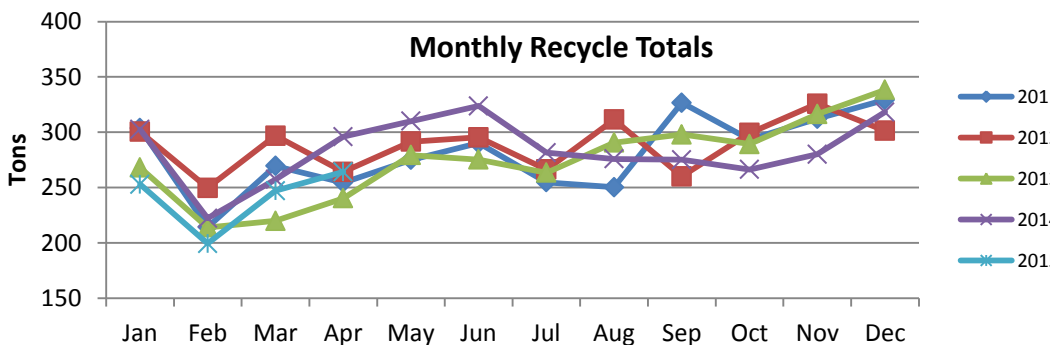
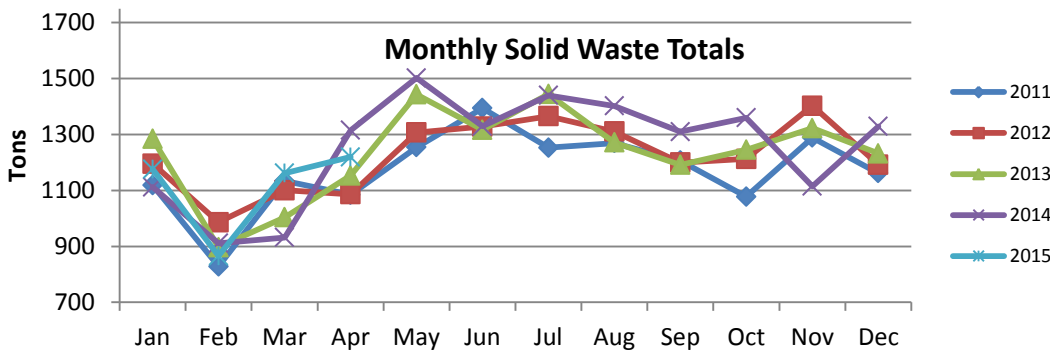


SOLID WASTE & COMMUNITY EVENTS

RIZZO
SERVICES
888-USRIZZO

SOLID WASTE

The Department of Public Works is responsible for the coordination of the Solid Waste contract for Township residents. The Township has over 16,000 homes that are serviced once a week for trash, recycling and yard waste. The DPW Administrative staff works as a liaison between Rizzo Services and the Township residents, to provide quality customer service at all times.



Solid Waste Rates Effective July 1, 2015 (per quarter)	
Single Family:	
Curbside	\$ 49.66
Doorside	\$ 99.36
Inside	\$ 116.64
Multi-Family (Condos/Apartments)	
Attached (individual)	\$ 43.16
Detached (individual)	\$ 48.55
Detached Doorside	\$ 99.33
Multi-Family Common	\$ 33.44



CONTRACT EXTENSION

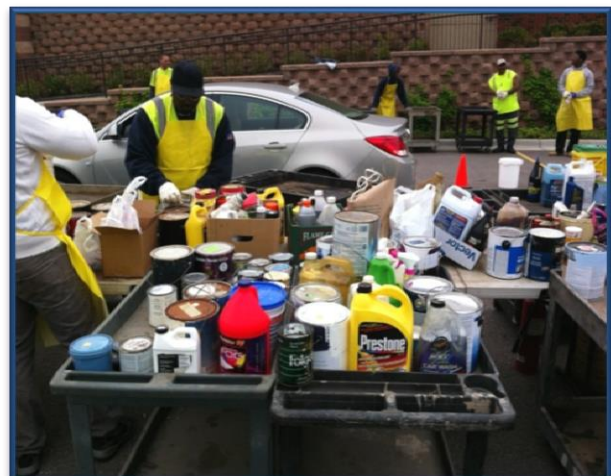
On November 10, 2014, the Board approved to accept a proposal to extend the current solid waste contract with Rizzo Environmental Services. The original contract was an eight-year agreement that began in July of 2007 and was set to expire on June 30, 2015. After several months of negotiations, the Township Board approved a proposal to extend the contract for an additional eight years, which will extend the service period to June 30, 2023. The rates will increase by 8% on July 1, 2015; for the typical curbside service this would increase the quarterly rate of \$45.98 to \$49.66, an increase of \$14.72 a year or just \$0.28 a week. The rates would then remain steady, with no increases, for the entire length of the contract. The proposal would keep in place all the current services that Township residents currently enjoy such as unlimited weekly trash, bulk items, recycle and yard waste pickup. In addition, the recycling program would be enhanced to include a new Recycling Rewards program and free 65-gallon, rolling, recycling carts for those who request one.

COMMUNITY EVENTS

The Township puts on several annual and bi-annual events throughout the year. Coordination, communication and planning amongst Township staff, contractors, volunteers and Township residents is the key to these events coming together successfully year after year.

Household Hazardous Waste Days

The Department of Public Works is responsible for the coordination and staging of the semi-annual drop off days for Township residents. The DPW staff works very closely with the Solid Waste contractor to provide this safe and effective event on the first Saturday of the month in May and October of each year. The participation for this event averages 800 - 1,000 residents, per event, bringing in household hazardous waste to be disposed of properly. During the events the Township sponsors a mercury thermometer exchange, offering residents to turn in a mercury thermometer for a new digital one. The staff sets up signs for traffic flow and checks various forms of identification of residents participating in the events. The cost of each event averages \$65,000.



COMMUNITY EVENTS

Electronic Recycling, Medication Disposal & Paper Shredding Event

The April 26, 2014 Electronic Recycling, Medication Disposal & Paper Shredding Event was a big success. In total, we had approximately 1,100 vehicles that came through the drop-off line and our residents appeared to utilize all the available services equally. Approximately 24,000 pounds of paper was shredded and recycled and a semi-truck was filled with electronics that were demanufactured and then recycled as well. In addition to the paper and electronics the event also took in approximately eight 55-gallon drums of unwanted or expired medications.



Clean Sweep

The Department of Public Works is responsible for the coordination and staging of this annual event that has become very popular with Township residents. This event coincides with Earth Day in April each year. Residents are encouraged to clean up areas throughout their subdivisions and entrances to the subdivisions that get littered with debris during the winter months. The Township, along with the Solid Waste contractor, provides residents with paper lawn leaf bags and large orange trash bags to collect debris and litter. This event is a volunteer event and offers local high school students the opportunity to earn community service for their participation. The total trash and debris that was collected during this year's event was 4,200lbs of trash 17,200lbs of compost.

