



**CHARTER TOWNSHIP OF BLOOMFIELD**

**NOTICE OF HEARING ON LOT SPLIT REQUEST**

**350 W BIG BEAVER ROAD AND 325 MANOR ROAD**

**BOARD OF TRUSTEES**

NOTICE IS HEREBY GIVEN that the Board of Trustees of the Charter Township of Bloomfield, Oakland County, Michigan will hold a Public Hearing at the following time and place:

Monday, May 9, 2016  
7:00 p.m.  
Bloomfield Township Hall  
4200 Telegraph Road  
Bloomfield Hills, MI 48302

At the Public Hearing, the Board will consider a request by the owners of Lots 5, 6 and 7 of Bloomfield Manor Subdivision (also known as 350 W. Big Beaver Road and 325 Manor Road), to demolish the two existing residences and subdivide the three parcels to result in eight single family residential lots. Comments regarding this request may be provided at the Public Hearing or by contacting the Planning Division at (248) 433-7795.

SIDWELL NO: 19-25-226-003, 004, 005

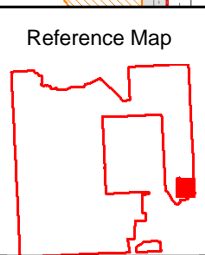
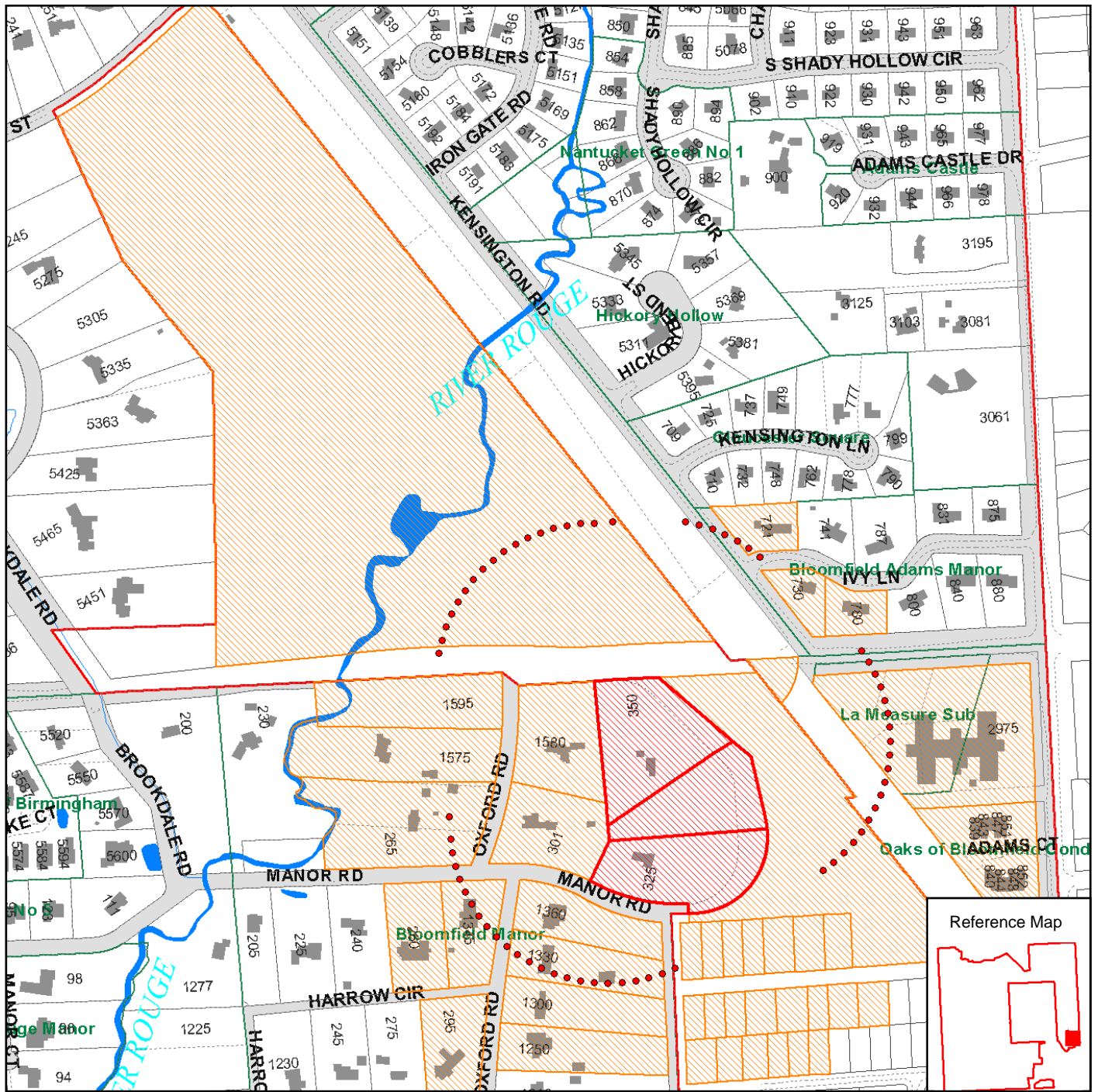
**JAN RONCELLI, TOWNSHIP CLERK**

NOTE: The Charter Township of Bloomfield will provide necessary, reasonable auxiliary aids and services at all meetings to individuals with disabilities. All such requests must be made at least five days prior to said meeting. Individuals with disabilities requiring auxiliary aids or services should contact the Bloomfield Township Clerk's Office by writing or calling the following: Clerk's Office, P. O. Box 489, Bloomfield Hills MI 48303-0489 - Telephone: 248-433-7702.

Posted: April 28, 2016



# Bloomfield Township - CivicSight Map



- MAP LEGEND:**
- LOT LINES
  - MARSH - SWAMP
  - ROAD EDGE - PLANIMETRICS - 2000
  - TOWNSHIP LIMITS
  - SUB DIVISIONS
  - RIVERS - STREAMS
  - OPEN WATER
  - BUILDING OUTLINE
  - PONTIAC 425 AGREEMENT
  - PARCEL LAYER
  - NO THROUGH ROADS
  - RIGHT-OF-WAY

Map Scale: 1 inch = 471 feet  
 Map Date: 4/25/2016  
 Data Date: March 16, 2016



Sources: Bloomfield Township, Oakland County GIS Utility, River's Edge GIS, LLC.

Disclaimer:  
 The information provided here is intended for reference purposes only. It was compiled from a variety of available sources with varying degrees of accuracy. It is not a legally recorded map or survey and is not intended to be used as one. Bloomfield Township assumes no responsibility for errors that arise from the use of the data.