



**NOTICE OF CONSIDERATION OF
SITE PLAN & SPECIAL LAND USE REQUEST**

**ACE PICKLEBALL
2285 FRANKLIN ROAD
(SIDWELL NO: 19-04-351-046)**

PLEASE TAKE NOTICE THAT a PUBLIC HEARING will be held by the Board of Trustees of the Charter Township of Bloomfield, Oakland County, Michigan on **MONDAY, FEBRUARY 24, 2025, at 7:00 p.m.** in the Community Television Studio, 4190 Dublin Drive, Bloomfield Hills, MI 48302. At the meeting, the Board will consider a site plan and special land use request for Ace Pickleball, an indoor pickleball facility, located at 2285 Franklin Rd.



Watch BCTVLive



Agenda & Packet

Comments regarding this site plan may be provided at the public meeting, submitted via email to publiccomment@bloomfieldtp.org or by contacting the Planning Division at (248) 433-7795. Materials for the Board meeting will be made available to the public on Bloomfield Township's [Documents of Demand webpage](#) by the close of business on Thursday, February 20, 2025. Meetings are broadcasted live through [Bloomfield Community Television](#) on Comcast's channel 15 for residents of Bloomfield Township. The links and Quick Response ("QR") codes provided above can be utilized to view the meeting's materials and proceedings.

**MARTIN C. BROOK
BLOOMFIELD TOWNSHIP CLERK**

NOTE: The Charter Township of Bloomfield will provide necessary, reasonable auxiliary aids and services at all meetings to individuals with disabilities. All such requests must be made at least five days prior to said meeting. Individuals with disabilities requiring auxiliary aids or services should contact Bloomfield Township by writing or calling the following: Letter • Bloomfield Township Clerk's Office, 4200 Telegraph Road, Bloomfield Hills, MI 48302. Email • clerk@bloomfieldtp.org Phone • 248-433-7702.

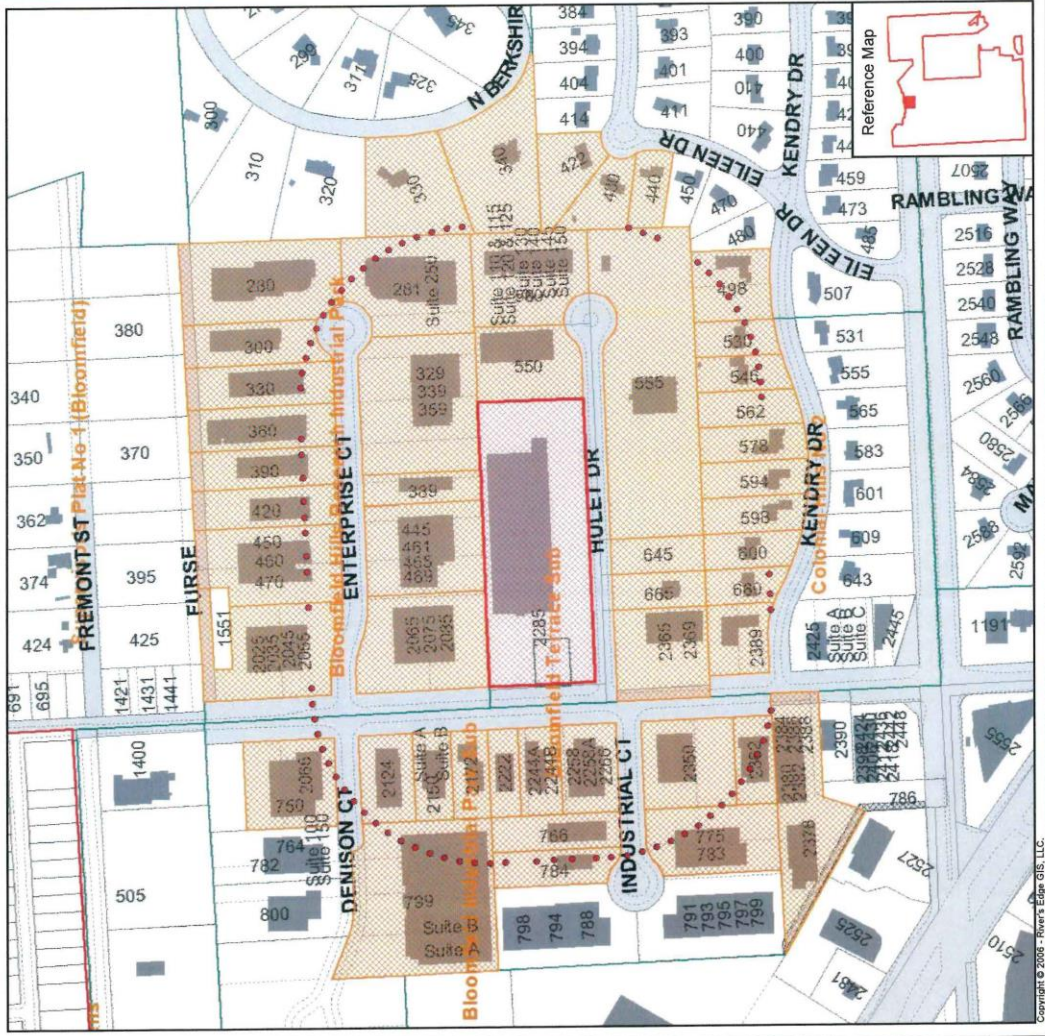
Bloomfield Township
2285 Franklin Road



- MAP LEGEND:**
- LOT LINES
 - MARSH - SWAMP
 - ROAD EDGE - PLANIMETRICS - 2000
 - TOWNSHIP LIMITS
 - SUB DIVISIONS
 - RIVERS - STREAMS
 - OPEN WATER
 - BUILDING OUTLINE
 - PONTIAC 425 AGREEMENT
 - PARCEL LAYER
 - NO THROUGH ROADS
 - RIGHT-OF-WAY

Map Scale: 1 inch = 395 feet
 Map Date: 2/05/2025
 Data Date: January 28, 2025
 Sources: Bloomfield Township, Oakland County GIS Utility, River's Edge GIS, LLC.

Disclaimer: This product has been prepared for reference purposes only. It was compiled from a variety of available sources with varying degrees of accuracy. It is not a legally recorded map or survey and is not intended to be used as such. The user assumes no responsibility for errors that arise from the use of the data.



Copyright © 2008 - River's Edge GIS, LLC