



Chief of Police
Geof Gaudard



Township Supervisor
Leo Savoie



2015 Annual Report

of the
**Bloomfield Township
Police Department**

4200 Telegraph Road
Bloomfield Hills, MI 48302

Township Government



The Charter Township of Bloomfield
4200 Telegraph Road
Bloomfield Hills, MI 48302



Elected Administrative Officials and Board of Trustees

Front, left to right, Clerk Janet Roncelli, Supervisor Leo Savoie, Treasurer Dan Devine
Back, left to right, Trustees David B. Buckley, Neal J. Barnett, Corinne Khederian, and Brian Kepes

Government Style:
Township Board

Township Supervisor:
Mr. Leo Savoie

Get involved! Stay informed! Click on the links to the right to get started

[Township Legal Notices](#)

[Board of Trustees Meeting Videos on Demand](#)

[Public Meetings- Agendas, Minutes, Notices & Schedules](#)

BLOOMFIELD TOWNSHIP

E PLURIBUS UNUM



TUEBOR

SICUT ERIS PENINSULAM AMOENAM
CIRCUMSPICE

POLICE

Chief's Comments

May 2016



Supervisor Leo Savoie,
Treasurer Dan Devine,
Clerk Jan Roncelli,
Bloomfield Township Board of Trustees,

As the Chief of Police for Bloomfield Township, I am proud to present the 2015 edition of the *Annual Report*. This document reflects the outstanding efforts of the police officers and civilian personnel within this department, during the past year. The work they do, in partnership with the community, promotes the safety of our residents, businesses and visitors.

This past year we have seen intense criticism and a negative perception of Law Enforcement spread across this country the likes I have not witnessed in my 25 plus year career. Special interest groups and the media are quick to judge our actions and decision making without all the facts available or taking into account the split second decision making involved during often violent or extreme encounters. If you just focus on the headlines or watch the often lawless protests that are occurring with constant frequency across our nation, you can become disheartened at the lack of support or down right contempt for police officers.

I however, choose to focus not on the vocal minority but rather on the sincere support and appreciation that we receive from the vast majority of our community. As Chief, I receive praise and compliments about the good deeds of our officers many times over the occasional complaint. The support we receive from our elected officials, other Bloomfield Township Employees, business owners, community groups and our fine citizens make us an effective and strong Police Department. On behalf of all our officers, I wish to thank you for your unwavering support and confidence. I assure we will continue to protect and serve and not let you down.

Respectfully Submitted,

Geof Gaudard,
Chief of Police

Table of Contents

Police Administration	1
Department Organization	2
-Personnel Deployment.....	3
-Patrol Division.....	4
-Investigations Deployment.....	5
-Support Services Deployment.....	6
Facilities	
-Animal Welfare.....	7
Patrol Division	8
-Patrol Division.....	9
-Traffic Investigations Unit.....	10
-K-9 Unit.....	11
-Field Training Unit.....	12
-Training Division	13
-Dispatch Center.....	14
-Village Police Department.....	15
Investigations Division	16
-Investigation Activity.....	17
-School Liaison Activity.....	18
-Juvenile Complaints.....	19
-Community Liaison Officer.....	20
-Property Section.....	21
-Firearm Registration/CPL.....	22
Department Statistics	23
-Township Growth Factors.....	24
-Group 'A' Complaints.....	25
-Group 'B' & 'C' Complaints.....	26
-Alarm Activity	27
-Police Vehicle Fleet.....	28
-Special Events.....	29-31

Police Administration



Chief Geof Gaudard
Chief of Police



Captain Phil Langmeyer
Patrol Captain



Lieutenant Paul Schwab
Administrative Lieutenant

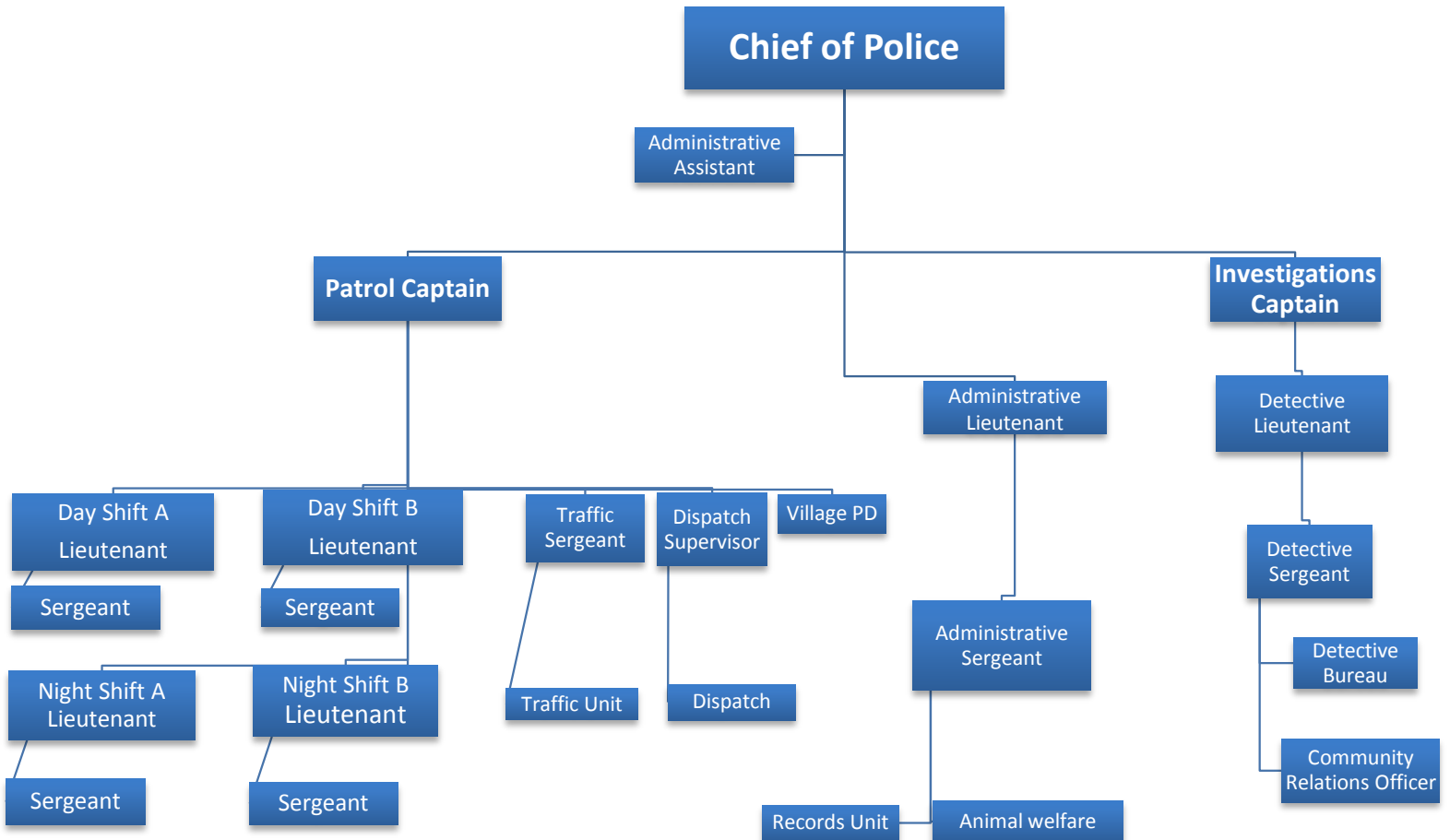


Captain Scott McCanham
Investigations Captain



Lori Kerr
Administrative Assistant

DEPARTMENT ORGANIZATION



Departmental Organization



Personnel

Administration	
Chief of Police	1
Captains	2
Lieutenant (Administrative)	1
Sergeant (Administrative)	1
Administrative Assistant	1
Total Sworn	5
Total Civilian	1
Total Administration	6

Patrol Division	
Lieutenants	4
Sergeants	5
Patrol Officers	33
Traffic Officers	3
Dispatchers	13
Animal Welfare Officers	2
Animal Welfare Clerk	1
Sworn Officers	45
Civilian Personnel	16
Total Patrol Division	61

Bloomfield Village Police	
Sergeant	1
Patrol Officers	4
Total Village	5

Other Civilian Employees	
Custodian	1
Total Other Civilians	1

Investigations Division	
Lieutenant	1
Sergeant	1
Detectives	5
Community Relations Officer	1
School Liaison Officers	2
School Security Officer	1
FBI Violent Crime Task Force	1
Narcotics Enforcement Team	1
Special Investigations Unit	1
Records Clerk, Investigations	1
Records Clerk	2
Sworn Officers	14
Civilian Personnel	3
Total Investigations Division	17

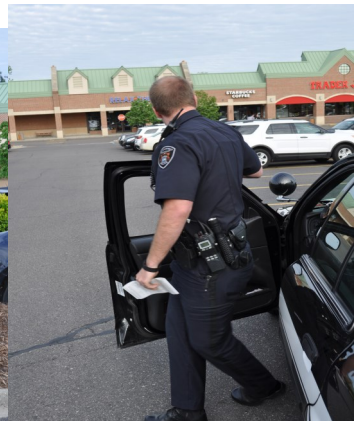
Note: The above numbers reflect the department strength as of 11:59 P.M. on 12/31/15

Department Organization



Patrol Division

Bloomfield Township Police Department Patrol Division consists of 45 sworn uniformed officers. The Police Department maintains a minimum staffing level at all times. The officers' patrol assignments are divided into two 12-hour shifts. At any given time, there is no less than 5 officers on patrol, not including command officers and specialty divisions such as K-9 and Traffic Investigations.



Department Organization



Investigations Division

Investigations Captain



Investigations Lieutenant



Investigations Sergeant



Records Clerk—Investigations

Detective Bureau

- Adult Criminal Investigations
- Community Relations Officer
- Crime Stoppers Liaison
- Oakland County Narcotic Enforcement Team Officer (N.E.T.)
- Special Investigations Unit (S.I.U.)
- Violent Crime Task Force (F.B.I.)

School Liaison Officers

- Child Abuse & Neglect
- Juvenile Criminal Investigations
- Status Offender Investigations
- Youth Criminal Investigations
- Juvenile Diversion Programs
- Liaison between the Police Department and School District.



Detectives investigate crimes, interview witnesses, submit warrant requests, and oversee cases through prosecution.



School Liaison Officers act as a direct link between school administrators and the Police Department. Aiding in juvenile cases as well as developing building security plans.

CRIME STOPPERS
1•800•SPEAK UP
ANONYMOUS TIP LINE CASH REWARDS

Crime Stoppers operates an Anonymous Tip Line (1.800.SPEAK UP) to encourage witnesses and others who have information about a reported crime. If a crime is solved because of a person's tip, that person is eligible for a cash reward. When the payment is made, the person who helped solve the crime remains anonymous, even to Crime Stopper personnel.

Departmental Organization



Support Services

Administrative Sergeant

- Digital Booking System
- Detention Facility
- Animal Welfare
- Evidence/ Property Management

Dispatch Supervisor

- Public Safety Answering Point
- Computer Aided Dispatching
- 911 Emergency Call Center
- G.I.S. Mapping

Records Clerks

- Gun Registrations and CCW Permits
- Filing and Storage of reports
- Compilation and reporting of crime statistics.
- Law Enforcement Records Mgt.
- Freedom of Information responses
- Law Enforcement Statistics
- C.L.E.M.I.S. data entry
- Records Retention
- In-Car Video storage and copying

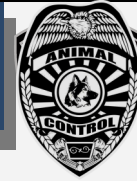


The Bloomfield Township Emergency Communications Center is the Public Safety Answering Point (PSAP) for all of Bloomfield Township Police, Fire, and EMS. This includes over 26 square miles and serves over 42,000 residents. The center is currently staffed by 1 Dispatch Supervisor and 12 Dispatchers. These professionals answered 64,587 phone calls in 2015. 16,850 of these were 911 calls for service.

Did you know that you can get a copy of your car accident online? Now you can! Save yourself a trip to the police station by clicking on the CLEMIS logo to the right.



FACILITIES



Animal Welfare

Bloomfield Township operates a state-certified animal shelter. This state-of-the-art facility is staffed by two uniformed Animal Welfare Officers and one civilian employee. This building is capable of providing shelter for dogs, cats and a variety of other wildlife. The staff collects and provides temporary care for animals until the animal can be claimed or transported to a facility that can provide extended care.

Animal Welfare Officers answer questions from the public ranging from pet care to animal adoptions. They assist the police department in the collection and disposal of deceased wildlife, and are occasionally called upon to enforce State laws and Township ordinances regarding pets. These knowledgeable officers also assist citizens with the trapping and prevention of nuisance animals.



The officers commonly are called to pick up and dispose of deceased wildlife both on and off the roadway. Bloomfield Township has a contract with Oakland County to dispose of larger deceased animals. Smaller animals are taken to Gasow Veterinary Clinic for treatment or disposal. While the operating cost of the animal shelter are covered by Bloomfield Township, other expenses are offset by public donations (i.e. food, blankets and animal toys). If you are interested in donating to the animal shelter, contact Animal Welfare (248)433-7757

Activity Type	2015
Animal Complaints	843
Animal Bites / Scratches	16
Animal Pick-Up, Live	97
Live Trap Requests	114
Animal Adoptions	162
Animals Returned to Owners	68
Dead Animal Pick up / Disposal	208

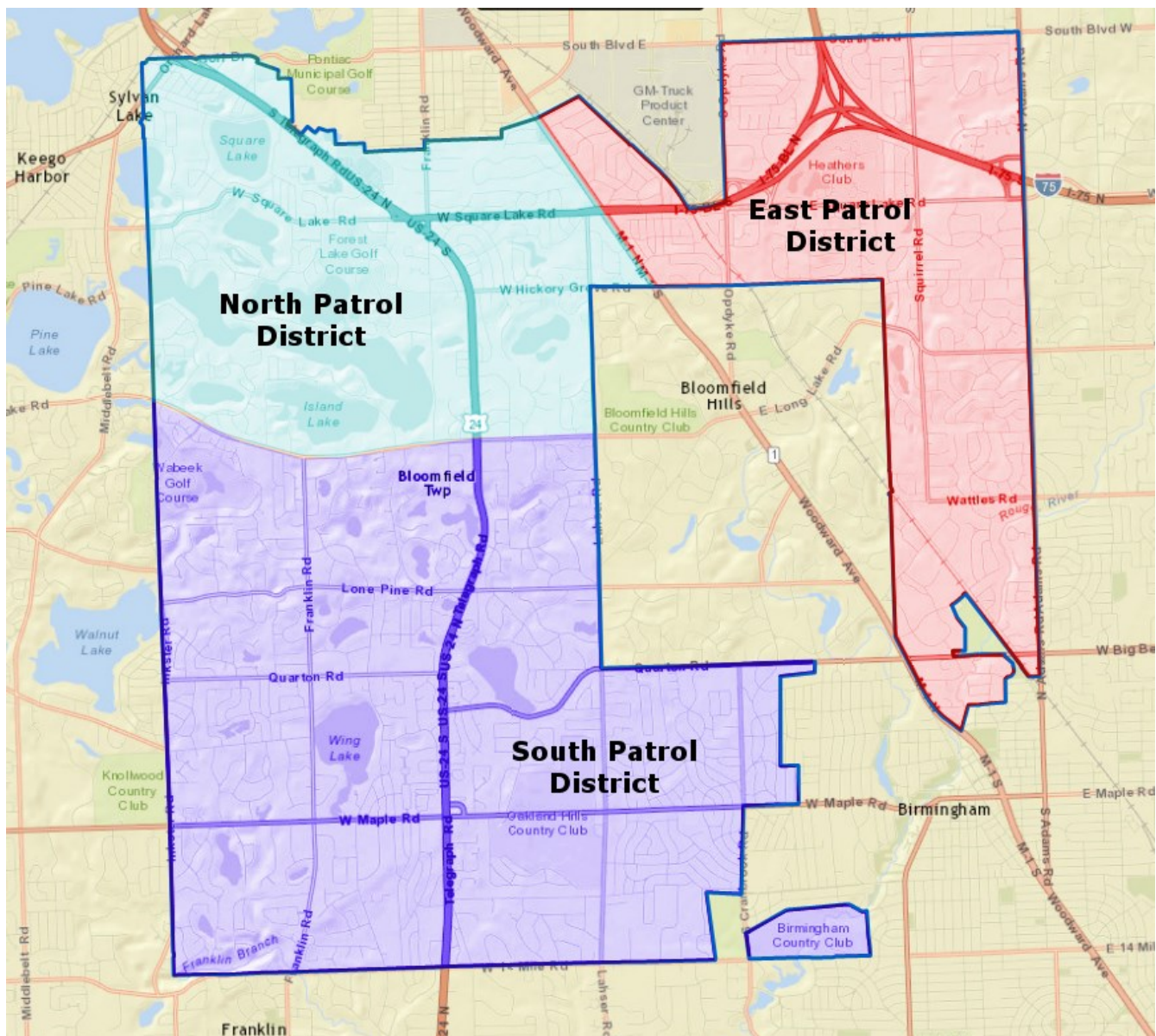


Patrol Division

PATROL DIVISION



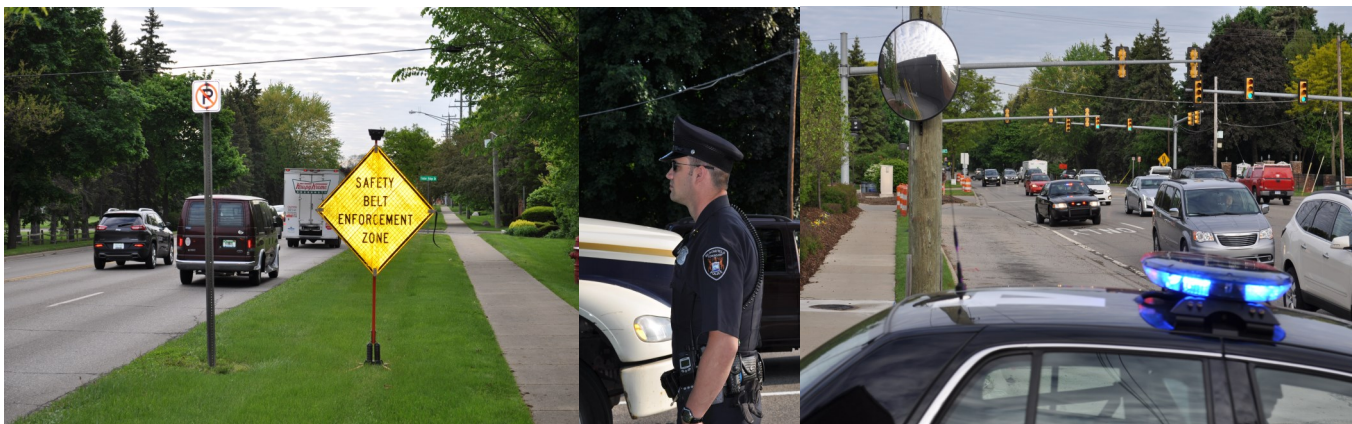
The Patrol division is staffed 24 hours a day, 7 days a week, 365 days a year. Bloomfield Township is divided into three “districts” or patrol areas. These districts are staffed every shift to provide the quickest response times. These districts are complimented by additional staffing from specialty units that are not assigned to districts and focus on selective enforcement areas (i.e. speeding, break-ins, etc.).



TRAFFIC INVESTIGATIONS UNIT



Top Traffic Crash Intersections			
	Location	2014	2015
1	Telegraph & Square Lake	430	482
2	Telegraph & Maple	367	330
3	Square Lake & Woodward	317	314
4	Telegraph & Long Lake	255	310
5	Square Lake & Adams	170	122



The primary duty of the Traffic Investigations Unit (TIU) is the enforcement of traffic laws in order to reduce traffic collisions, their resulting injuries, and to facilitate the safe and expedient flow of vehicular and pedestrian traffic. These efforts result in safer roadways and streets, fewer fatalities, injuries, and reduces property damage.

The Police Department impounds vehicles for multiple reasons. Some of these include arrests, traffic hazard, abandoned vehicle, recovery of stolen vehicles, and illegally parked vehicles.

If you are involved in a traffic crash on a public roadway, no matter the amount of damage to the vehicles, you are obligated to contact the police.

To report a traffic crash within Bloomfield Township call (248)433-7755.

2015 Citations	
Hazardous	6288
Non-Hazardous	4000
Code/Ordinance Violation	26
All Other	1685
Total Citations	12007

Vehicles Impounded This Year	
Bob Adams Towing	535
General Towing	749
Other Towing Companies	12
Total	1296

Traffic Crash, 2- Year Comparison			
Year	Crashes	Change	% Change
2015	2298	-28	-0.1%
2014	2326	165	8.6%

K-9 UNIT



The Bloomfield Township Police Department has one of the longest running Canine Units in the State of Michigan (formed in the 1960's). The mission of the Canine Unit is to assist officers and save lives through the use of a canine's unique and advanced abilities. The Unit is designed to assist patrol officers in areas of officer safety, tracking, and detection of illegal narcotics.

2015 was a year of transition for the Bloomfield Township Police K-9 Teams. K-9 Officer Rico retired after nearly 9 years of service.



Officer Max. Excited to hit the road

To fill the vacancy, the Police Department purchased K-9 Officer Max. Max is a 2 year old German Shepard from Poland. Max has been partnered with Officer Follman. The Bloomfield Township Police Department has two full time K-9 Teams; Officer Carlson and Kody and Officer Follman and Max.

The Bloomfield Township Police Department Canine Unit, working with Patrol, placed narcotic interdiction as a priority for enforcement action.

In compliance with the Oakland County Mutual Aid Agreement, the Department's K-9 units frequently respond to requests from outside of Bloomfield Township.



Officer Carlson and Kody taking a report at the desk.

K-9 Activity		
	Narcotic Searches	Person/Article Search
Bloomfield Twp. Calls	125	36
Outside agency calls	17	27
Demonstrations	25	

FIELD TRAINING UNIT



Ofc. Riney swearing in



Ofc. Turner swearing in



Ofc. Soley swearing in

When a “recruit” officer is hired by Bloomfield Township Police Department, they are required to pass an intense 16 week Field Training Program. This program teaches recruit officers the basics of law enforcement and criminal complaint investigations.

The Field Training Unit is managed by a Lieutenant, who serves as the Field Training Coordinator. This Lieutenant is responsible for the overall management of the program.

Recruit Officers have the opportunity to ride/work with a seasoned instructional officer known as a Field Training Officer or “FTO”. The recruits complete phases on all of the shifts (Day Shift, Flex Shift, Midnight Shift). Each phase of the FTO program teaches the recruit officer to perform as a solo patrol officer. The recruit officers perform daily patrol activities as well as off duty homework and have written tests to complete each phase.

Once a recruit officer successfully completes the final phase of the program, they are approved by the Field Training Officers, Field Training Coordinator and the Chief of Police to conduct solo patrol activities. The recruit officer will remain under the watchful eye of the Field Training Coordinator for the remainder of their first year as probationary officer.

The Field Training Unit is comprised of 8 Field Training Officers. This year, the Field Training Unit trained 3 new Police Officers. Two of the new officers have prior law enforcement experience and one officer came to Bloomfield Township directly from the Police Academy. All three officers have successfully completed the Field Training Program and are on schedule to graduate from probationary status in early 2016. These officers are already making a positive contribution to our organization.

Training Division



Training is vital in Law Enforcement. The Bloomfield Township Police Department remains an elite agency due to the dedication and fortitude of the training staff. The training staff consists of both Patrol Officers and Command Staff that are specially trained in specific areas of law enforcement.

The goal of the training division is to provide the best possible training for officers and staff within the department.

These dedicated professionals work regular duty shifts and take on the additional responsibility of becoming a trainer in a specific discipline of law enforcement. Areas of expertise include defensive tactics, firearms, motorcycle handling, traffic crash investigations, medical first response, OWI investigations, Use of Force, and Field Training. Training Officers attend classes and become highly educated in their area of expertise, then return to instruct classes for department personnel.

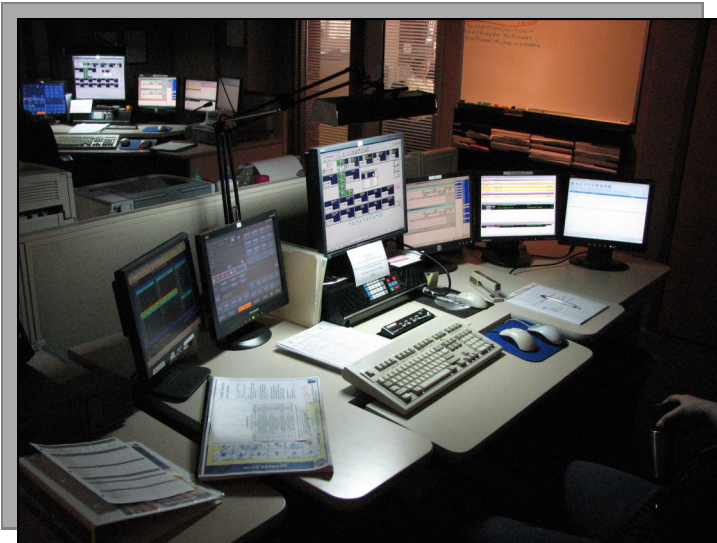


Public Safety Dispatch Center



The main center of any public safety department is the Dispatch center, also known as the P.S.A.P. (Public Safety Answering Point). The Dispatch center receives all emergency telephone calls for both the Police Department and the Fire Department. The 13 Dispatchers answer both non-emergency and 911 calls. They enter calls into the C.A.D. (Computer Aided Dispatching) system and dispatch both police and fire personnel as required. All 13 of Bloomfield Township's dispatchers are specially trained to handle high stress telephone calls.

Bloomfield Township Dispatchers are tasked with monitoring multiple live-feed security cameras throughout the Bloomfield Township campus. They also monitor the behavior and well being of anyone held in the police department's detention facility.



Above: Dispatchers monitor multiple computers as well as television screens. The top televisions are security camera feeds positioned throughout Bloomfield Township's campus. The lower screens are multiple radio, telephone and dispatch screens.

Going on vacation?

When you're leaving town for a couple of days let us know. The Bloomfield Township Police Department conducts house checks for residents that notify us of their absence. To take advantage of this service, call us at **248-433-7755**.

VILLAGE POLICE DEPARTMENT

Bloomfield Village Police Dept.



The unique residential community of Bloomfield Village is a part of Bloomfield Township where the residents have chosen to fund one additional property tax mill to support the cost of additional law enforcement presence. Through this arrangement, the Patrol Division of the Bloomfield Township Police Department and the Bloomfield Village Police Department share law enforcement patrol responsibilities in Bloomfield Village. Criminal matters requiring extensive follow up investigations remain under the jurisdiction of Bloomfield Township. The Bloomfield Village Police Department consists of four full-time patrol officers under the field supervision of one patrol sergeant and operates out of its own police and fire facility at 3595 Bradway Boulevard.

Bloomfield Village Police

<i>Dispatched Calls</i>	7692
Suspicious Vehicles	43
Suspicious Persons	43
Home Invasions	2
Larceny/Theft/Fraud	33
Malicious Destruction of Property	6
Arrests	10
Traffic Violations	250
Traffic Warnings	302
Assist Citizens	240
Traffic Crashes	108
House Checks	6326
Other calls for service	329



Investigations Division

Investigations Division



Investigations Clearance Report for 2015

Assigned	Open	Closed
1343	71	1272



The Investigations Division is led by a Lieutenant and Detective Sergeant. This division is staffed by five full time Detectives, two School Liaison Officers, and one School Security Officer. The primary job of these Detectives is to investigate criminal complaints. The complaints range from serious felonies such as homicide to misdemeanors like underage drinking violations. Detectives receive additional training in interview and interrogation techniques, crime scene investigation, search and seizure law, and in preservation and collection of evidence.

This division also oversees the Bloomfield Township officers assigned to specialty units such as the Narcotics Enforcement Team (NET), Special Investigations Unit (SIU) and the F.B.I.'s Violent Crimes Task Force (VCTF). The Investigations Division interacts with many outside law enforcement agencies including the FBI, Secret Service, ATF, DEA and Customs/Border Patrol. Members of the Investigations Division participate regularly with the Major Case Assistance Team (MCAT). This team is comprised of multiple law enforcement agencies and investigators with specific expertise in investigative areas. The team works together to aid an agency that experiences a major crime.

Investigations Division

School Liaison Officer Activity



The Bloomfield Township Police has two officers assigned to the Bloomfield Hills School District. These liaisons are the Department's representatives to the Bloomfield Youth Assistance program (B.Y.A.) as well as a direct link between the school district and police department. This collaboration establishes partnerships committed to implementing prevention and intervention strategies for Bloomfield Hills School District youth and families.

Additional School Liaison Officer Responsibilities include:

- Investigate both adult and juvenile cases
- Write/Serve warrant and court orders
- Investigate reports of Missing/Runaway juveniles involving other government agencies.
- Present cases to the Prosecutor's Office and Juvenile Probation
- Organize/Conduct operations related to tobacco and alcoholic beverage sale to juveniles/minors
- Provide Juvenile Law training to department members
- Maintain juvenile crime/arrest statistics
- Attend school-related youth events

Cases Handled by School Liaison Officers

Number of Complaints Received	444
Dispositioned Offenders	259

Disposition of Juvenile Offenders

Handled within department / released	140
Referred to Circuit Court	0
Referred to Probate Court	10
Referred to Private/Public Agency	13
Referred to Bloomfield Youth Assistance	31
Referred to Bloomfield Township Attorney	65

Investigations Division

Juvenile Complaints



Juvenile complaint / crimes are committed by subjects 16 years old or younger, and do not include non-criminal complaints. Juvenile courts focus on the child and seek to meet the child's needs through rehabilitation, supervision, and treatment.

Complaint Type	Received	Closed	Open
Criminal Sexual Conduct	2	2	0
Robbery	0	0	0
Assaults	4	4	0
Home Invasion	0	0	0
Larceny	24	22	2
MDOP	5	5	0
Drug Offenses	10	10	0
Liquor/Alcohol Violations	51	51	0
Runaway/Missing/Lost	0	0	0
Juvenile (Status*) Offenses	27	27	0
Misc./All Other Violations	42	42	0
Total	165	163	2

* "Status" offenses are incidents that are only illegal or police related due to the juveniles age. If the subject were an adult, the incident would not be illegal (i.e. curfew violations, truancy, etc.)

Investigations Division

Community Relations Officer



The Community Relations Officer's responsibilities include police station tours for local civic groups, home security surveys, and reviews crime prevention plans for proposed construction within Bloomfield Township. The Crime Prevention Officer attends neighborhood association meetings to answer the concerns of the community.

The Liaison institutes projects with officers and with neighborhood associations to address both long and short term problems within the community. As well, the Liaison finds meaningful ways to connect the police department, businesses, and residents to better serve Bloomfield Township.



**Bloomfield Township Police
Community Relations Officer
Officer Kelly Marthen
(248)433-7724**

Activity for the Year

Home Security Surveys	16
Crime Prevention Plan Reviews	96
Neighborhood Association Meetings	7
Other Civic Group Meetings	20
Station Tours	45

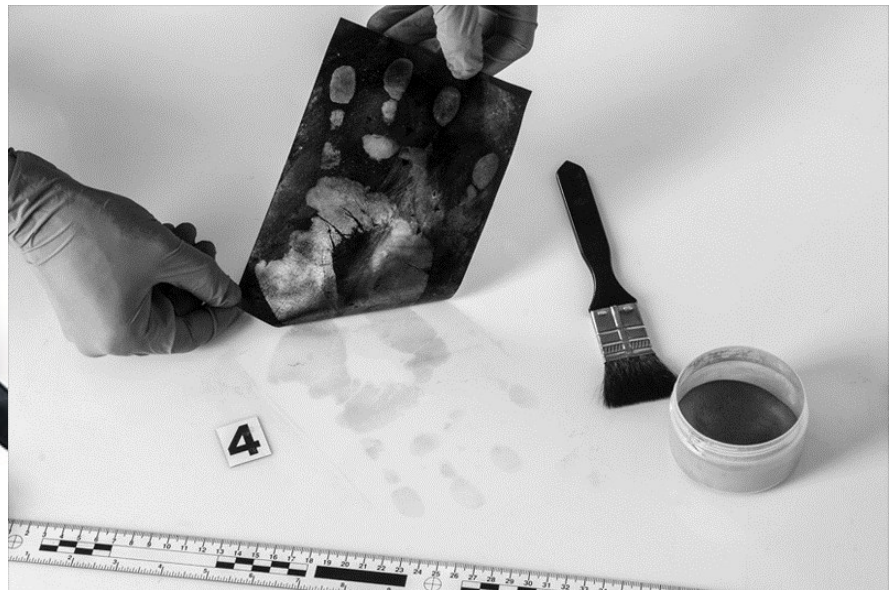
Investigations Division

Property Section



Property and evidence taken into custody by members of this department is received, processed, stored and released by the Administrative Sergeant. Property handled by the department can be classified in several different categories such as evidence, impounded for safekeeping, or found. The Administrative Sergeant, utilizes a property record maintenance program, logs all tagged property into the system and facilitates it's proper storage.

Article Type	2013	2014	2015
Articles received	901	1182	1160



Investigations Division



Firearms Registration & CPL Permits

The Bloomfield Township Police Department offers CPL (Concealed Pistol License) classes that are certified by the Michigan Commission On Law Enforcement Standards and taught by officers that are State Certified Firearms Instructors. They provide students with the current legal decisions regarding carrying of a concealed weapon.

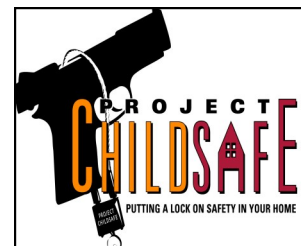
The classes are held in the Bloomfield Township gun range, located on the Bloomfield Township Campus. If you are interested in enrolling in a CPL class taught by Bloomfield Township Police Officers, please check the Police Department Facebook page for more details, or contact Officer Kelly Marthen at (248)433-7724.

Firearm Records 2015

Month	Purchase Permits	Registrations
January	72	78
February	78	75
March	79	79
April	67	66
May	60	56
June	2	0
July	72	73
August	60	45
September	89	102
October	78	79
November	46	39
December	176	175
Total	879	867

Free Gunlocks Available to the Public

The Bloomfield Township Police Department is a proud participant in the Project Childsafe™ program that provides free gunlocks to the public. In our lobby, 24 hours a day.



Department Statistics



TOWNSHIP GROWTH FACTORS



2015			
Sworn Officers	64		
Population*	42,343	or 1 Officer per	661.60 Residents
Residences (Including Multiples)*	17,919	or 1 Officer per	279.98 Residences
Complaints	20,202	or 1 Officer per	315.65 Number of Complaints

2014			
Department Strength (Sworn Officers)	64		
Population*	42,617	or 1 Officer per	665.9 Residents
Residences (Including Multiples)*	17,893	or 1 Officer per	279.6 Residences
Complaints	21,063	or 1 Officer per	329.1 Number of Complaints

2013			
Sworn Officers	67		
Population*	41,779	or 1 Officer per	623.57 Residents
Residences (Including Multiples)*	17,842	or 1 Officer per	266.30 Residences
Complaints	20,380	or 1 Officer per	304.18 Number of Complaints

*Statistics from the Southeast Michigan Council of Governments (SEMCOG). Click on their logo to learn more.



Yearly Statistics

Group 'A' Complaints



Class 'A' complaints are typically classified as felony criminal complaints. Michigan also has High Court Misdemeanors, which are similar to felonies because they are punishable by more than one year in jail.

In 2015 nationwide law enforcement has shown a dramatic increase in Identity Theft. Additionally, throughout the state, police agencies have documented an increase in the improper/illegal possession, transportation, storage, and use of medical marijuana, resulting in an increase to drug violations.

Group 'A' Complaints and Arrests				
Group 'A' Complaints	2014	2015	Arrests	Complaints
Murder/Homicide	1	0	0	↓
Criminal Sexual Conduct I&III	4	2	1	↓
Criminal Sexual Conduct II&IV	0	3	0	↑
Robbery	6	3	0	↓
Carjacking	0	0	0	
Assaults	104	101	29	↓
Burglary/Home Invasion	57	62	8	↑
Larceny (Incl. Retail Fraud)	255	311	36	↑
Motor Vehicle Theft	15	14	5	↓
Fraud (Incl. Identity Theft)	238	336	10	↑
Damage to Property/Vandalism	54	46	1	↓
Drug Violations	87	150	117	↑
Weapons Violations	9	11	11	↑
Total	2844	3054	218	

Yearly Statistics



Group 'B' and 'C' Complaints

Group 'B' Complaints and Arrests				
Group 'B' Complaints	2014	2015	Arrests	Complaints
Fraudulent/Bad Check	11	8	3	↓
Indecent Exposure	3	7	1	↑
Family Offense	4	2	0	↓
OWI/Impaired Driving	195	208	188	↑
Liquor Law Violations	37	67	136 *	↑
Resisting/Obstructing	19	23	17	↑
Local,State,Federal Ordinance Violations	15	6	17	↓
Total	305	342	346	

*Large increase attributed to three very large open house parties with juveniles in possession of alcohol

Class 'B' criminal complaints include felony and misdemeanor crimes. These crimes are punishable by time served in the county jail and cover both state and local laws. A misdemeanor crime is less serious than a felony. Misdemeanor crimes are usually distinguished from a felony by the seriousness of injury caused to a person, the cash value of the property taken, or the amount and type of illegal substance in a persons possession.

Group 'C' Complaints and Arrests				
Group 'C' Complaints	2014	2015	Arrests	Complaints
Alarms	4,095	3,787		↓
Animal Complaints	1,018	843		↓
Property Damage Accidents	1,956	1,922		↓
All Other Vehicle Complaints	1,292	1,144		↓
Warrant Arrests	266	322	244	↑
Suspended Driver (DWLS)	473	642	475	↑
Medical Emergency	705	706		↑
All Other Group 'C' Complaints	9,657	8,840	9	↓
Total	19,462	18,206	728	

Class 'C' complaints cover the remainder of police activity. They include medical emergencies, alarms, and driving offenses. Typically these complaints do not require case assignment.

Yearly Statistics

Alarm Activity, 3 Year Comparison



Every year the Bloomfield Township Police Department responds to thousands of alarms, both residential and commercial. The vast majority of these are false alarms that were accidentally activated by a homeowner, employee or possibly weather related (thunder or high winds).

Once an alarm has been installed, residents are required to register their alarm system with the Township. This takes just a few minutes to do. For more information about registering your alarm system call the Records Unit at 248-433-7776.

Alarm Activity, 3 Year Comparison

Year	Alarms	Change	% Change
2015	3787	-308	-12%
2014	4095	-84	-2%
2013	4179	55	1%

Preventing False Alarms

Homeowners can help prevent false alarms by having the house's alarm system inspected annually. Contact your alarm company to schedule an inspection of your alarm system to prevent false activations.

Yearly Statistics

Police Vehicle Fleet



Modern law enforcement is heavily dependent upon motor vehicles to accomplish its mission. The most visible of these are patrol cars and motorcycles, however there are multiple other police vehicles you may never notice. Among these are the animal welfare trucks, prisoner transport van, and detective cars.

Vehicle Type	# In Fleet
Police Patrol Units	20
Police Motorcycles	2
Animal Welfare Units	2
Village Police Units	2
Unmarked Police Units	15
Other Utility Vehicles	2
Prisoner Transport Van	1
Police Traffic Units	3
TOTAL	47



Special Events

Open House



Annually, Bloomfield Township hosts an open house. The Police Department opens the doors and provides tours of the police station, police car rides, displays of police equipment, as well as fun activities for children and adults alike. Everyone has the opportunity to speak to officers, dispatchers, detectives and even the Chief. This gives our residents the opportunity to get a better understanding of local law enforcement duties and responsibilities.



Special Events



Parades

The Police Department participates in many parades in the area. Including the Franklin Village Labor Day Parade.

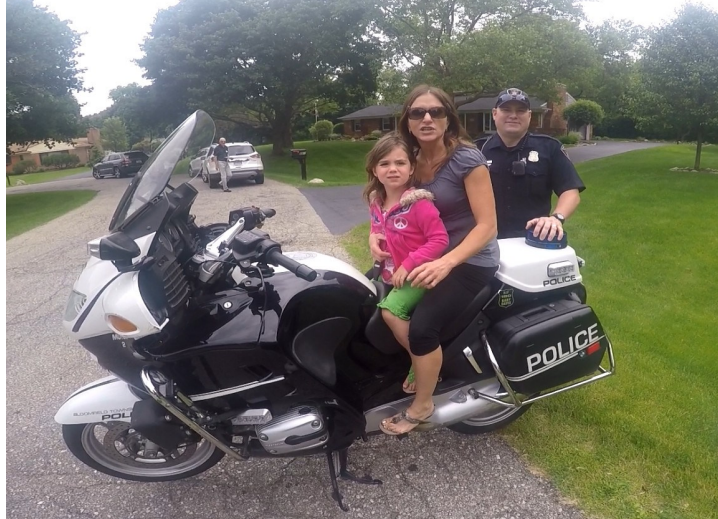


Police Officers and Firefighters often participate in subdivision parades, picnics, Ice Cream Socials, Subdivision Association meetings, Etc.

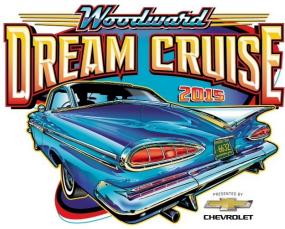
If you would like to have an Officer attend your event,

Contact:

Ofc. Kelly Marthen (248) 433-7724



Special Events

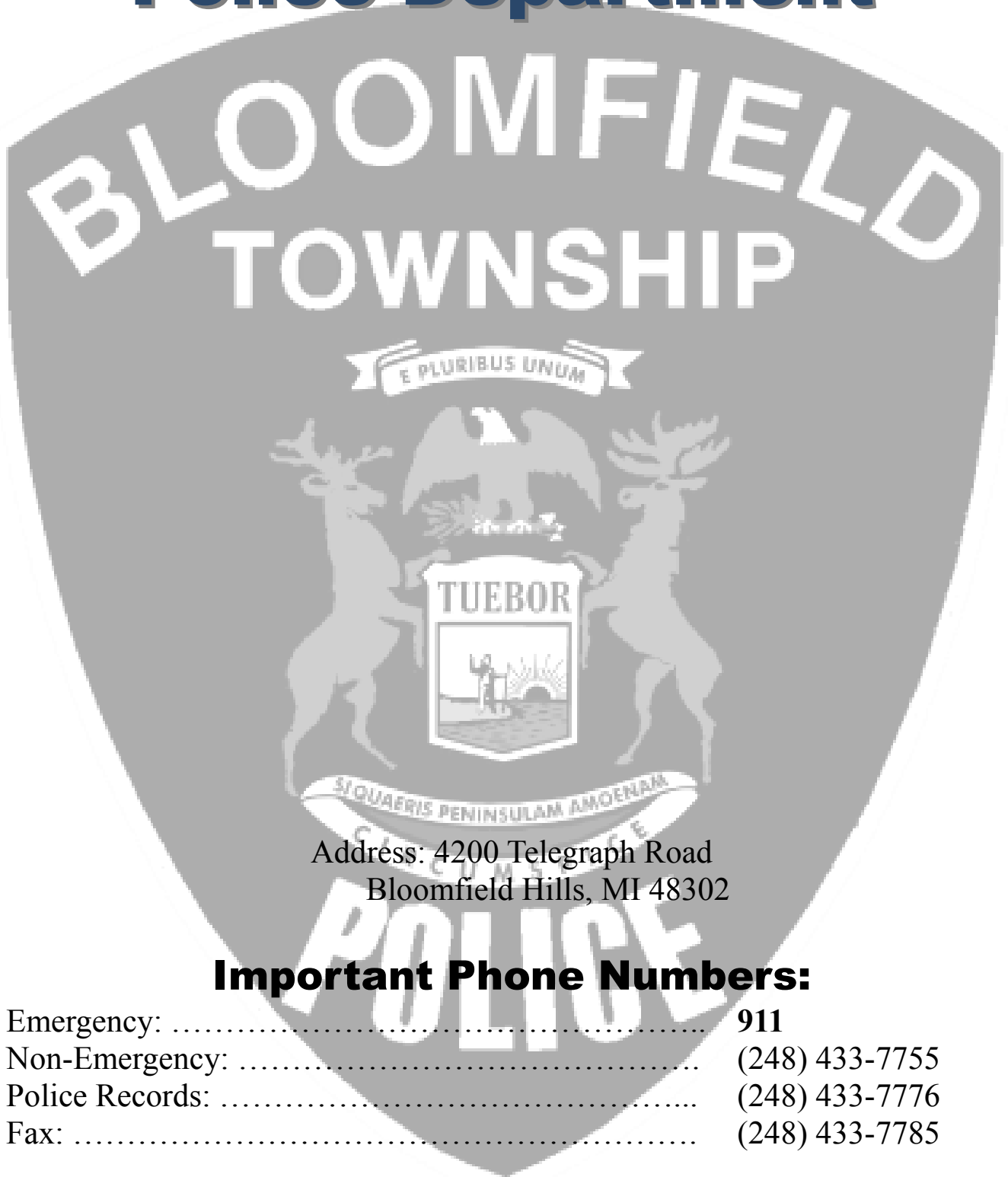


Dream Cruise

Bloomfield Township Police Department annually participates in the Woodward Dream Cruise. The Woodward Dream Cruise is the world's largest one-day automotive event, drawing about 1.5 million people and 40,000 classic cars each year from around the globe. Spectators can see muscle cars, street rods, custom, collector and special interest vehicles dating back across several decades. This family event is not only a fun time for automotive enthusiasts, officers also enjoy working with the public and watching the cars cruise'.



Bloomfield Township Police Department



Address: 4200 Telegraph Road
Bloomfield Hills, MI 48302

Important Phone Numbers:

Emergency:	911
Non-Emergency:	(248) 433-7755
Police Records:	(248) 433-7776
Fax:	(248) 433-7785



Bloomfield Township web site:
www.Bloomfieldtwp.org



Follow us on:
Facebook:
Bloomfield Township Police Department